

# WHAT ARE THE PHOTOVOLTAIC PANELS THAT ARE ATTACHED TO THE ROOF CALLED



What is a solar panel roof? When we talk about solar panel roofs, we usually picture traditional solar panels mounted on the roof, capturing sunlight through photovoltaic cells and converting it into electricity. However, there's also another option: solar roof tiles also called solar shingles.



How do solar panels attach to a roof? Installers fix solar panels to a roof by lifting up some roof tiles and attaching mounting brackets to the rafters, before carefully placing the tiles back where they were. They'll then attach rails to these brackets, before locking solar panels into the rails.



How do roof-integrated solar panels work? Technically, roof-integrated solar panels function just like traditional solar panels or solar roof tiles, using photovoltaic cells to convert sunlight into electricity. However, instead of sitting on top of the roof on visible brackets that can affect your home's aesthetic appeal, they become a part of the roof structure itself.



What is the difference between a solar panel roof and a shingles? The two types of solar panel roof function similarly but also have some differences, here we will discuss them. Solar panels have better performance in terms of solar efficiency. Several reasons can explain this. Most solar shingles are made of copper indium gallium selenide, which is thin and flexible.



What is on-roof solar roofing? On-roof solar panels make up the most widely recognisable solar roofing system in the UK. The system is made up of individual panels mounted onto the roof which sit on top of your existing tiles or other roof finish. This solar roofing system is proven and widely available, but the main downside is the aesthetics.



# WHAT ARE THE PHOTOVOLTAIC PANELS THAT ARE ATTACHED TO THE ROOF CALLED



What is a rooftop solar power system? A rooftop solar power system, or rooftop PV system, is a photovoltaic (PV) system that has its electricity-generating solar panels mounted on the rooftop of a residential or commercial building or structure.



Note that the other assembly materials or hardware should be included in the solar panel kit you purchased. If the installation items are all set, you can now proceed to the step-by-step solar panel mounting process. ???



Step 2: Work on the solar panel connections. Secure at least two parallel solar panel support rails onto the shed roof. Ensure they're anchored and weatherproofed to withstand outdoor conditions. Create a small opening in the shed's ceiling for the electrical conduit.



The Solar Mounting Process. Unless you'd like a leaky roof and potentially airborne panels during the next major weather event, mounting a solar energy system is much more complicated than just screwing the ???



Panels are tilted at the best angle to capture the most sunlight, usually between 5 and 15°. The amount of ballast needed is dependent on a roof's load limit. When a roof can't support a lot of extra weight, some penetrations may be needed. Panels attach to the mounting systems either through clamps or clips.



# WHAT ARE THE PHOTOVOLTAIC PANELS THAT ARE ATTACHED TO THE ROOF CALLED



In these cases, the Solar Panel Mounting Systems need to be adaptable to the roof's slope, ensuring that the panels are securely attached and positioned for optimal energy absorption. Metal and Tile Roofs: Special ???



The next step for Polysolar is to create a solar panel that is entirely clear with no tinting. While Michigan State University was able to create one that they called the transparent luminescent solar concentrator in 2014, it was only capable of efficiency levels of 1%. They can also be installed in greenhouses as both the roof and walls



See also: Solar panel mounting Roof + Ground (RV ??? Houses ??? Boats) Step 2: Install Roof Attachments. This step is where things start looking up (literally). Keep in mind the considerations for attachment types, depending on your roof type! See also: How To Lift Solar Panels Onto Roof.



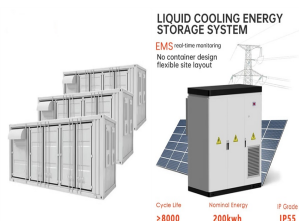
To properly anchor your solar panel racking, solar installers will typically remove clay tiles at the areas where they need to attach racking feet to your roof. Metal hooks and flashing are drilled into the roof, and your tiles can be ???



The solar panel that is covered by leaves drops energy production to 50% because half of the panel is covered. With a central inverter, the remaining four panels will also operate at 50%. With AC solar panels, only the covered solar panel will operate at 50%; the rest will be operating at 100% because they each have an individual inverter.



# WHAT ARE THE PHOTOVOLTAIC PANELS THAT ARE ATTACHED TO THE ROOF CALLED



Another element that many solar purchasers often do not take into full consideration is the other equipment that may already be on the roof at the time of solar panel installation. For example, those with satellite or other commercial television services had a dish or electrical pylon installed on or by the roof, where the solar panels tend to be placed.



Here are the key steps when preparing for a solar panel roof installation.  
#1 The initial assessment of your roof. It is possible to attach solar panels without drilling holes into your roof by using adhesive or clamp-based mounting systems. These systems use specially designed brackets and clamps that hold the panels on the roof without



Integrated solar panels, also called in-roof solar panels or built-in solar panels, are designed to be installed as part of your home's roof. Based on your property size and the solar panel size, in-roof solar panels in the UK can save you between ?440 and ?1,005 a year. Plastic trays are attached: The installer attaches plastic



Integrated solar panels, also known in roof solar panels, are photovoltaic solar panels embedded into the roof. In contrast, regular on roof solar panels are installed and attached with rails above the roof on top of your roof tiles. Structurally, roof-integrated solar panels are the same as traditional on roof panels.



Photovoltaic (PV) systems are one of the most important renewable energy sources worldwide. Learning the basics of solar panel wiring is one of the most important tools in your repertoire of skills for safety and practical reasons, after all, residential PV installations feature voltages of up to 600V.



# WHAT ARE THE PHOTOVOLTAIC PANELS THAT ARE ATTACHED TO THE ROOF CALLED



The solar panels that you see on power stations and satellites are also called photovoltaic (PV) panels, or photovoltaic cells, which as the name implies (photo meaning "light" and voltaic meaning "electricity"), convert ???



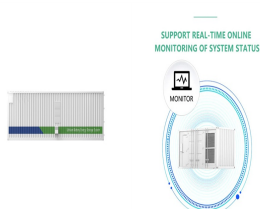
Maximizing the Benefits of Solar Panel Roof Mounts. When it comes to maximizing the benefits of solar panel roof mounts, there are several strategies to consider. By optimizing panel placement and orientation, ???



The fixing is then normally attached to the structural roof deck through the insulation. The only point of penetration is therefore factory produced, meaning the roofing contractor only needs to weld the flange of membrane in the same way as the remaining roof, using their existing skills. For the Solar Panel Support posts, MSA Latchways



A solar tracking system is a technology which tracks the sun's trajectory and orient the solar panels accordingly. It ensures that the solar panel faces the sun at 90-degree angle for the maximum period of a day. As a result, the productivity of a solar system is maximum in this tracking system solar panel structure.



What is a Solar Panel Roof? When we talk about solar panel roofs, we usually picture traditional solar panels mounted on the roof, capturing sunlight through photovoltaic cells and converting it into electricity. However, there's also ???



# WHAT ARE THE PHOTOVOLTAIC PANELS THAT ARE ATTACHED TO THE ROOF CALLED



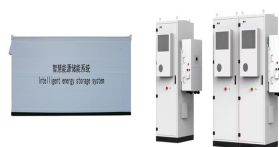
Unlike regular solar panels (also called "on-roof panels"), integrated panels need minimal mounting equipment, and the support that is there is hidden out of sight underneath the panels. In-roof panels are also designed to behave like roof tiles ??? they're weatherproof, waterproof, and can be as strong as normal roof tiles.



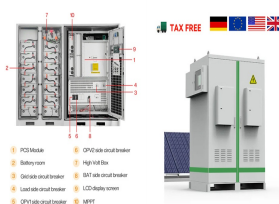
A solar panel is a device that converts sunlight into electricity by using Solar panels are usually arranged in groups called arrays or systems. A photovoltaic system consists of one or more solar Roof-mounted solar power systems ???



By far the most common method for fixing Solar PV panels to a roof. Normally the lowest price it also gives the best performance as there is maximum ventilation, allowing the panels to keep cooler. We attach clamps to the standing seam of the roof, then either a rail is attached to the clamps or the solar PV panels are fixed directly to the



In recent years, solar panels have become more popular than ever before, with the UK seeing more than 17,000 new solar installations each month so far in 2023. This isn't surprising, given that solar panels can dramatically cut your ???



What is solar panel mounting and racking? Solar panel mounts and racks are equipment that secures solar panels in place. Mounting allows the panels to be adjusted for optimal tilt, which can be based on latitude, seasons, or even time of day ??? to ensure maximum solar energy production. The most common locations for mounting are on the roof, using solar roof mounts, ???



# WHAT ARE THE PHOTOVOLTAIC PANELS THAT ARE ATTACHED TO THE ROOF CALLED



Monocrystalline solar panels are the most cost-effective option. Perovskite panels are more efficient and will be on the market soon. Thin film panels are the cheapest, most versatile choice. It's confusing enough trying to find solar panel prices, never mind choosing between the different types of solar panels to pick the right one for your home.



Attach the Solar Panel Mounts. Once you are safely up on your roof, the first thing you will need to do is secure your solar panel mounts. Mounts are what your panels will attach to and "hang" from, so you must ensure they are completely stable. Also, consider how you're going to maximise sunlight exposure throughout the day.



Fitting a conventional solar panel to a flat roof: The solar panel is attached to the roof of the campervan using mounting brackets. These are generally made from plastic. A set of 4 corner plastic mounting brackets will usually be sufficient. For larger solar panels (or extra peace of mind) then additional side brackets can be used. The



Whether deck- or rafter-attached, sealing roof penetrations is still important. Flashing materials are the same in either situation, but the type of fasteners or screws differ. PLP includes 1 1/2-in. deck screws for deck-attached systems and 2 1/2-in. lag screws for rafter-attached systems.



However, it's still worth installing solar panels on a slate roof. The average household will save £537 per year on its electricity bills, and break even in 17 years ??? leaving you plenty of time to enjoy the free energy your panels produce. Are there other solar panel options for a ???



# WHAT ARE THE PHOTOVOLTAIC PANELS THAT ARE ATTACHED TO THE ROOF CALLED



Solar electric panels (also called solar cells or photovoltaic cells) that convert sunlight to electricity are only just becoming really popular; solar thermal panels, which use sunlight to produce hot water, have been commonplace for decades. Even in relatively cold, northern climates, solar hot-water systems can chop significant amounts off your fuel bills.



On-roof solar panels make up the most widely recognisable solar roofing system in the UK. The system is made up of individual panels mounted onto the roof which sit on top of your existing ???



Integrated solar panels, also called in-roof solar panels or built-in solar panels, are designed to be installed as part of your home's roof. They replace a section of roofing material rather than being mounted on top of the ???



An average 4kW solar panel system covering 29 square meters of your roof currently costs around ?6,400. And, although it is estimated that the inverter will need to be replaced every 10 - 15 years (?500 - ?1,000), the solar panels themselves once installed, require very little maintenance and can last for more than 30 years.