

WHAT ARE THE SOLAR THERMAL POWER GENERATION EQUIPMENT



And they have been considered as promising alternatives to meet the urgent demand for energy around the world. 29, 30 Traditional solar thermal-to-electric power generation systems use heat engines to convert heat into electricity in two steps (heat to mechanical movements and then mechanical energy to electrical power generation). 31, 32 However, a ???



Solar thermal power plants today are the most viable alternative to replace conventional thermal power plants to successfully combat climate change and global warming. In this paper, the reasons behind this imminent and inevitable transition and the advantages of solar thermal energy over other renewable sources including solar PV have been discussed. The ???



Solar Thermal Power Generation. Concentrated solar power (CSP) turns sunlight into electricity. It focuses sunbeams with mirrors or lenses to heat liquids. This heat then powers turbines to create electricity. Even though CSP setup costs more at first, its ability to store thermal energy means it can work day and night. Conclusion

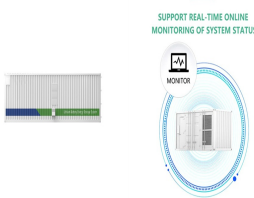


Concentrating solar-thermal power (CSP) systems use mirrors to reflect and concentrate sunlight onto receivers that collect solar energy and convert it to heat, which can then be used to produce electricity or stored for later use. Solar energy technology doesn't end with electricity generation by PV or CSP systems. These solar energy



Overall, the perspectives for the future contribution of solar energy to the global energy mix are very high, as one example the possible development of solar electricity from solar thermal power plants according to the roadmap of the International Energy Agency shown in Fig. 2, with about 11% of contribution to electricity supply.

WHAT ARE THE SOLAR THERMAL POWER GENERATION EQUIPMENT



High-temperature solar thermal power plants are thermal power plants that concentrate solar energy to a focal point to generate electricity. The operating temperature reached using this concentration technique is above 500 degrees Celsius. This amount of energy heat transfer fluid to produce steam using heat exchangers. The energy source is a high ???



Solar energy is a green, stable and universal source of renewable energy, with wide spectrum and broad area characteristics [1] is regarded as being one of the renewable energy sources with the greatest potential to achieve sustained, high intensity energy output [1], [2]. The conflict between population growth and water shortage has become one of the most ???



Many solar thermal applications take advantage of this renewable energy taking advantage of the thermal sun's energy. 1. Electricity generation. Concentrated solar power facilities are a kind of thermal power plant to generate electricity. Then concentrated solar power systems use solar thermal collectors to obtain heat.



More complex solar-thermal power systems can convert this thermal energy into electricity, often through the use of a steam turbine or an organic Rankine cycle engine. Solar thermal technology can be made to fit small homes or big power ???

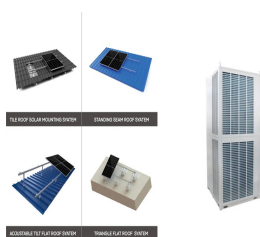


Solar panels, also known as photovoltaics, capture energy from sunlight, while solar thermal systems use the heat from solar radiation for heating, cooling, and large-scale electrical generation. Let's explore these mechanisms, delve into solar's broad range of applications, and examine how the industry has grown in recent years.

WHAT ARE THE SOLAR THERMAL POWER GENERATION EQUIPMENT



At an optimal angle of reflectance, solar radiation is directed onto the solar collector to enhance sunlight reflection onto the heating plate, thereby boosting the electricity generation capacity of the solar power plant . Furthermore, employing reflectors enhances the irradiation received by the PV panel, yet simultaneously results in an increase in the PV ???



Solar power, also known as solar electricity, is the conversion of energy from sunlight into electricity, either directly using photovoltaics (PV) or indirectly using concentrated solar power. Solar panels use the photovoltaic effect to convert light into an electric current. [2] Concentrated solar power systems use lenses or mirrors and solar tracking systems to focus a large area of ???



Renewable energy plays a significant role in achieving energy savings and emission reduction. As a sustainable and environmental friendly renewable energy power technology, concentrated solar power (CSP) integrates power generation and energy storage to ensure the smooth operation of the power system. However, the cost of CSP is an obstacle ???



Lastly, the research results can be used as a guide for the application and design of solar thermal power generation equipment. 2. System and methods2.1. Experimental system. To study the characteristics of solar thermal power generation based on phase change materials, paraffin wax, a commonly used phase change material in daily life, is selected.

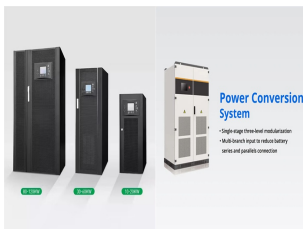


Shouhang High-Tech Energy Technology Co., Ltd. was founded in 2001, with its headquarter located in Gansu Province and its production base in Tianjin and Gansu. Shouhang High-Tech takes "Clean Energy and Energy Conservation and Environmental Protection" as its business development strategy, and is engaged in research and development in the fields of solar ???

WHAT ARE THE SOLAR THERMAL POWER GENERATION EQUIPMENT



In addition, a comparison is made between solar thermal power plants and PV power generation plants. Based on published studies, PV-based systems are more suitable for small-scale power



Solar thermal power generation technology research Yudong Liu^{1*}, Fangqin Li¹, and Jianxing Ren¹, Guizhou Ren¹, Honghong Shen¹, and Gang Liu¹ equipment composition of solar thermal power generation are basically the same as those of fossil fuel power plants. The biggest difference is that the heat



Solar thermal power generation systems use mirrors to collect sunlight and produce steam by solar heat to drive turbines for generating power. This system generates power by rotating turbines like thermal and nuclear power plants, and therefore, is suitable for large-scale power generation. Passive: A passive system requires no equipment



equipment composition of solar thermal power . The research on large-scale solar energy-based thermal power generation technologies in China is still in its infancy, but in foreign countries

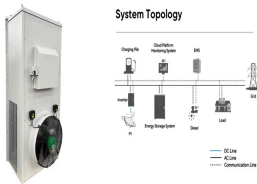


Accurately assessing solar and wind resources is vital for solar thermal power and heat generation. Solar heat and CSP plants need to use transparent, validated, and accepted performance models provided by independent third parties to accurately model the operation of the plant accounting for transient behavior of the plant, including start-ups

WHAT ARE THE SOLAR THERMAL POWER GENERATION EQUIPMENT



Solar energy generation is a sunrise industry just beginning to develop. With the widespread application of new materials, solar power generation holds great promise with enormous room for innovation to improve efficiency conversion, reduce generating costs and achieve large-scale commercial application. Many countries hold this innovative technology in high regard, with a ???



Concentrated solar power (CSP, also known as concentrating solar power, concentrated solar thermal) systems generate solar power by using mirrors or lenses to concentrate a large area of sunlight into a receiver. [1] Until 2012, solar-thermal electricity generation was initially eligible for feed-in tariff payments (art. 2 RD 661/2007)



Solar thermal-electric power systems collect and concentrate sunlight to produce the high temperatures needed to generate electricity. All solar thermal power systems have solar energy collectors with two main components: reflectors (mirrors) that capture and focus sunlight onto a receiver most types of systems, a heat-transfer fluid is heated and circulated ???



"solar thermal power generation" ??? 8 replacement of energy saving equipment (including energy saving light bulbs, T5 florescent tubes, movement sensors, etc.) in the community buildings of non-profit making organisations.



Similarly, the solar thermal energy systems can be easily integrated with existing process industries to supply heat to either water pre-heating/steam generation. The solar thermal system can be integrated with the central steam/hot water supply system of ???

WHAT ARE THE SOLAR THERMAL POWER GENERATION EQUIPMENT



There are two ways to heat your home using solar thermal technology: active solar heating and passive solar heating. Active solar heating is a way to apply the technology of solar thermal power plants to your home. Solar thermal collectors, which look similar to solar PV panels, sit on your roof and transfer gathered heat to your house through either a heat

???

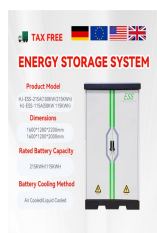


Net electricity generated by Solar Thermal power plants in South Africa reached 1,253.9 GWh in 2021, declining 3.5% YoY Power Generation and Cumulative Capacity of Solar Thermal Power Plants in South Africa (2017

???, 2021) - GlobalData



Working Principle of a Thermal Plant. The working fluid is water and steam. This is called feed water and steam cycle. The ideal Thermodynamic Cycle to which the operation of a Thermal Power Station closely resembles is ???



10. SOLAR POWER TOWER SYSTEMS These designs capture and focus the sun's thermal energy with thousands of tracking mirrors (heliostats) in roughly a two square mile field. A tower resides in the center of the heliostat field. The heliostats focus concentrated sunlight on a receiver which sits on top of the tower. Within the receiver the concentrated sunlight

???