

# WHAT CAN 60W SOLAR PANELS BE USED FOR



What is a 60-Watt solar panel? A 60-Watt solar panel is a solar panel with a power output of 60 watts. It is relatively small and light and can be assembled and mounted in no time. You can buy multiple 60-Watt solar panels for more power, making it an affordable option for a solar system.



How many hours can a 60 watt solar panel power? A 60-watt solar panel can charge for approximately five hours on average, given sufficient sunlight. This equates to around 300 Watt-hours of energy production daily. Here is a list of things that a 60-watt solar panel can power:



How many amps does a 60 watt solar panel generate? A 60-watt solar panel generally generates 2.5 to 4.5 amps depending on the panel's voltage rating. Amperage output from solar panels fluctuates with the amount of sunshine falling on them; thus, keeping this in mind is crucial. For instance, a 60-watt solar panel's output current is maximized on a bright day compared to a gloomy day.



How many 60-Watt solar panels do I need? A single 60-Watt solar panel can charge a 50-Amp Hour battery in two days. To charge it in one day, you would need two 60-Watt solar panels. A 60-Watt solar panel has a very high Wattage per dollar value.



Can a 60 watt solar panel charge a 50 amp battery? Yes! An average 60-Watt solar panel produces about 5 Amps. With simple multiplication, 5 Amps can charge a 50-amp hour battery in ten hours. So, according to the math, you can charge a 50-amp hour battery with a 60-watt solar panel in usually ten hours.

# WHAT CAN 60W SOLAR PANELS BE USED FOR



How much power does a solar panel produce? For instance, a solar panel rated at 60 watts may provide electricity equivalent to 60 watts at full capacity. However, a solar panel's actual power production can change based on things like the sun's angle, the weather, and the temperature.



1 x 60W solar panel with aluminium fixing bracket attached 1 x 4m cable bundle 1 x pack fuses, ring terminals etc 1 x user manual 10-year panel warranty. Option to add the charge controller of your choice. Warranty. The 60W PV Logic rigid panels comes with a 10-year warranty . ???



1 x 60W solar panel with aluminium fixing bracket attached 1 x 4m cable bundle 1 x pack fuses, ring terminals etc 1 x user manual 10-year panel warranty. Option to add the charge controller of your choice. Warranty. The 60W PV Logic rigid panels comes with a 10-year warranty . ???



This high efficiency, waterproof 60W Solar Panel 12V monocrystalline solar panel is perfect for permanent outdoor use to provide free electricity for charging 12V. batteries to power various applications such as in a camper van, motorhome, boat, shed, farm, as well as remote applications such as telecommunications or monitoring equipment. It can also be used to ???



A 60-watt solar panel is a good choice for individuals who want a small, simple panel that can provide a reasonable quantity of power. What Can a 60-Watt Solar Panel Power? Here's what 60-watt solar panel can power:

# WHAT CAN 60W SOLAR PANELS BE USED FOR



Delivering up to 360W per day, the 60W panel is suitable for powering most DC and some AC appliances via a separately purchased inverter. Benefitting from a 10-year panel warranty, the 60W panel comes in a bulk pack of five and each ???



60W, 12V Saurally Solar Panel. Saurally Solar manufacturers, distributes & retails the most efficient, robust & durable range of Solar Panels starting from 3W and up to 300W. Our Solar Modules comply with all MNRE, IEC & TUV guidelines and ???



5w 10w 20w 30a 40w 50w 60w Off Grid Solar Panel Kit. We can offer Solar Panels from 100w all the way to home panels at 420w and industrial at over 550w. Our range of Inverters go from 500w up to a mighty 10kw. And now we offer energy storage as well with battery power.



Here we address some of the most frequently asked questions, myths and misconceptions surrounding solar energy, solar farms and solar panels. Do solar panels need bright sunshine in order to work? No. Solar ???

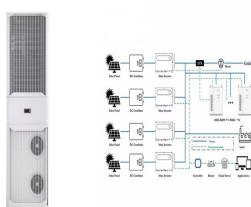


Multiple panels can be connected in parallel to increase the current, or in series to increase the voltage and allow 24V/36V/48V battery banks to be charged (depending on the solar controller used). The panel can also be used as a direct power supply for applications not sensitive to changes in input voltage / current (e.g. electric motors or

# WHAT CAN 60W SOLAR PANELS BE USED FOR



You can see that if one of the solar panels has a lower voltage rating (and the same current rating) compared to the remaining panels, the output power is lower than in the previous example but the loss is not significant. Things, however, are entirely different if you connect in series panels of different current ratings.



This highly efficient, waterproof 60W 12V monocrystalline solar panel is ideal for permanent outdoor installation, providing free electricity to charge 12V batteries. It powers a wide range of applications, from camper vans, motorhomes, and ???



With our 160W solar panels, you can join the movement for clean energy! Find answers to FAQs and everything you need to know about our 160W solar panels. Using an EcoFlow 60W panel with an EcoFlow portable power station ensures faster charging times and greater energy efficiency. Choose any PPS from our EcoFlow DELTA or EcoFlow RIVER 2

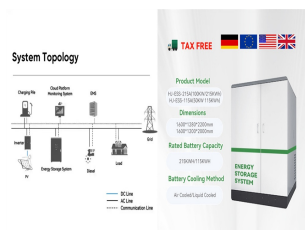


That's a lot of power Robb, and to make things worse heaters are virtually incompatible with photovoltaic (PV) solar systems. However, you can use active solar heating systems that use ???



The higher the battery voltage, the more solar panels you can use. Charge controller amps x battery voltage = solar panel size in watts.  $30A \times 12V = 360$ .  $30A \times 24V = 720$ . Again this should only be done if the controller VOC is not exceeded. And if you live in a cold climate, add at least 5V to the solar array VOC.

# WHAT CAN 60W SOLAR PANELS BE USED FOR



2 ? High Efficiency 60W solar cell is made from US, up to 23.5% efficiency, providing endless energy for laptop, power station, cellphone and other battery under sun. Waterproof & Durable Equipped with a rugged water resistant, anti-shock, dust-proof exterior for outdoor use. Can also be affixed to your backup, bicycle or tent when you're out enjoying the great ???



The Sunshine Solar's SFGM series is a semi-rigid lightweight solar panel it has flame-retardant ETFE coating on both the front and back sides which can also protect the solar cells from external impact. Its special grain design can reduce the reflection of light to absorb more sunlight. Having a full ETFE coating makes it more suitable for extreme application, especially the marine ???



This high efficiency, waterproof 60w Solar Panel 12V monocrystalline solar panel is perfect for permanent outdoor use to provide free electricity for charging 12V batteries to power various applications such as in a camper van, motorhome, boat, shed, farm, as well as remote applications such as telecommunications or monitoring equipment. It can also be used to ???



Evaluate your home's solar needs, recognizing that while a single 60W module might not power an entire house, it can be part of a larger, more comprehensive solar system. Uncover the unique role of 60 watt solar panels, ideal for outdoor and recreational use, providing a renewable energy source for specific purposes.



60W Solar Charger - lightweight solar panel compatible with power stations iPhone's, smartphones, or Android phones direct DC/USB charging. 01329 722390 Yes, any solar panel can be used with Bluetti portable power stations as long as the voltage, current (amps) and power (watts) is within the limits mentioned in the user manual.

# WHAT CAN 60W SOLAR PANELS BE USED FOR



The 60W PV Logic flexi solar panel is often a standard fit for caravan and campervan manufacturers. Delivering up to 360W per day, the 60W panel is suitable for powering most DC and some AC appliances via a separately purchased inverter. Benefiting from a two year panel warranty, it is supplied with a 4m cable, terminals, fuse and user manual.



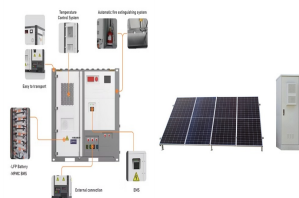
You can use any solar panel with a rated power of 110W (or slightly above) to charge the EcoFlow RIVER 2 ??? instantly turning it into a solar generator! The USB-C input/output is 5/9/12/15/20V, 3A, and 60W Max. Since the EcoFlow RIVER 2's capacity is 256Wh, you'd divide that by the max watts of the USB-C input/output:  $256\text{Wh} / 60\text{W} = 4.3$



60w 12v Solar Panel Kit 12v 10a Charge Controller 5m cable. This highly efficient, waterproof 60W 12V monocrystalline solar panel is ideal for permanent outdoor installation, providing free electricity to charge 12V batteries. It powers ???



The LUMOPAL 60W Folding Solar Charger Kit is a high-quality and reliable portable solar panel that offers a convenient power source for outdoor enthusiasts. With its lightweight and portable design, versatile charging options, and high conversion efficiency, it ensures fast and efficient charging of various devices.



EcoFlow's RIVER 2 Solar Generator is a must-have for camping or RV trips. Our new 60W portable solar panel is the lightest and most convenient option available. With a weight of only 3.2kg and a folding design, it's easy to grab and go at any time.



# WHAT CAN 60W SOLAR PANELS BE USED FOR



Understand the capacity of a 60W solar panel, learning how it harnesses sunlight through the photovoltaic effect. Discover practical applications for a 60W solar panel, such as charging ???



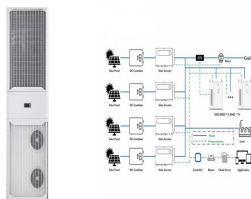
Our new 60W portable solar panel is the lightest and most convenient option available. With a weight of only 3.2kg and a folding design, it's easy to grab and go. Our solar panels use an all-inclusive connector that easily pairs with all EcoFlow power stations and most third-party batteries on the market, providing a convenient and seamless



Can I Connect Any Solar Panel To An Anker Power station? Anker, a leading brand in portable power solutions, offers a range of power stations compatible with various solar panels. USB C input: Up to 60W: PowerHouse 511: USB C input: Up to 45W: PowerHouse 522: 8mm input: 11-28V, 9A (100W max) PowerHouse 535: 8mm input: 11-28V, 10A (120W ???)



Powapacs 60W Solar Panel are equipped with SunPower solar cells offering an efficiency of over 23.5 percent. This energy can be used to charge a number of devices via the integrated USB port. In addition to the USB outputs, the Powapac solar panel has an 18v DC output meaning it can be combined with the Powapac Atom to offer a versatile



This 60w Flexible Reinforced Solar Panel Kit high-efficiency uses a semi-flexible 60W solar panel and is perfect for permanent outdoor use to provide free electricity for charging 12V batteries to power various applications. We can offer Solar Panels from 100w all the way to home panels at 420w and industrial at over 550w. Our range of

# WHAT CAN 60W SOLAR PANELS BE USED FOR



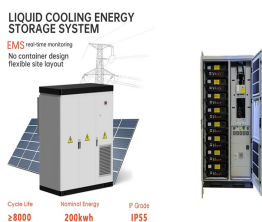
Unless the solar panel is tiny, it is strongly advised to utilize a solar charge controller when connecting a solar panel directly to a battery. Generally speaking, a 5-watt solar panel can be directly attached to the battery terminal, but anything more significant requires a solar regulator to prevent the battery from being overcharged.



Solar Panel Kits. 20w to 60w Solar Panels Kits Rigid Solar Charging Kits ??? Here at Eos Solar Solutions we know how daunting it can be selecting the right Solar Panel and Controller for a Solar Power System. Take a look at our best selling Solar Panel 60w and our range of ???



This 60W PV Logic solar panel roof and deck top kit enables the solar panel to be professionally fitted to the roof of a caravan, motorhome or yacht. Benefitting from a two year product warranty, the 60W solar panel is often a standard fit for caravan and campervan manufacturers and delivers up to 390W per day.



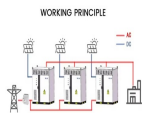
The 12v 60w Solar Panel is powerful enough to keep your battery charged over that long weekend away without starting the generator or plugging in to an external source. The 12v 60w Solar Panel Slimline Monocrystalline is fitted ???



That means an 140-200 watt solar panel could charge the 512Wh version in 5-6 hours and the 788Wh version in 7-8 hours. Can I use a Goal Zero or Jackery solar panel with Anker portable generators. Theoretically yes.



# WHAT CAN 60W SOLAR PANELS BE USED FOR



This high-efficiency, waterproof semi-flexible 60W solar panel kit is perfect for permanent outdoor use to provide free electricity for charging 12V batteries to power. various applications, such as in a motorhome, caravan, camper, boat, ???