

# WHAT CAN BE PLACED IN A LOCKER



What should you put in a work locker? A water bottle can be a great addition to your work locker. Buy a water bottle with a handle lid so you can hang it on a rail hook and optimise the space. A vacuum-insulated water bottle will keep your cold beverages fresh and you will have access to your favourite drink to re-energise whenever you need it.



What should you keep in your office locker? Ensure you are never caught out on a hot or busy day and always stay fresh at work by keeping your favourite perfume or deodorant stored in the locker. You can also add refresher towels or wipes for maximum freshness. Keep a sweatshirt, shawl or cardigan in your locker for colder days in the office.



What are locker accessories? Locker accessories : Locker accessories too find a place of their own inside the staff room lockers. Wallpapers, locker lightings, magnetic hooks and magnetic materials are some of the accessories that an employee can indulge in. A locker accessory is deemed to increase a locker's functionalities.

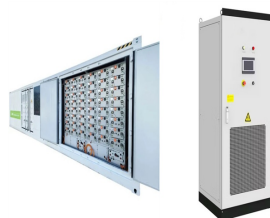


What makes a good office storage locker? 1. Important files and folders : Files and folders are some of the mandated equipment that makes up most of the office space apart from employees and furniture. Having said this, with a well-structured storage locker, an employee can make way for all these files and folders.



Do you need a personal locker at work? Office lockers have become increasingly popular, with many of us being fortunate enough to have a personal locker at work. Lockers can significantly contribute to managing our work lives. To make the most of your locker at work, you need to consider what to store, what accessories to add for convenience, and how to keep it clutter-free.

# WHAT CAN BE PLACED IN A LOCKER



What items are included in a laptop locker? Laptop lockers are available as charging or non-charging. All charging units are tested to BS 6396:2008. Lock covers allow for numbering on every door for ease of identification. The rear panel is perforated for heat dissipation.

1. Shoes
2. First Aid Kits
3. Helmets
4. Balls of string
5. Purses
6. Hats
7. Toiletries
8. Sellotape
9. Dry Pet Food



These are not updated straight away but give you an insight on what the team is working on. They have various branches so you may get sneak peaks into future content (i.e. currently a lot of work is put into the camper module, missions, MLRS and a new desert military base monument).



It's the one place in school that's entirely yours, under lock and key. You'll want to leave most of the space in it free to store your PE kit, textbooks, exercise books and other school essentials. in your locker. You can pick up a spare if you're buying yourself a takeaway salad and just stash it for when you need it.



What to put in your locker. Although not technically a question, it's along the same lines as "What can I put in my Locker?". This is a good starting point. It may seem obvious but we wouldn't suggest that you can store a?



The Lockers allows for storage of items, and can be opened and closed. This can be quite useful in the early stages of the game, where storage is limited. The kit provides two variants. Locker (Small) placed\_on\_grid = Small Grid | decon\_with\_tool1 = Hand Drill | placed\_with\_item = Kit (Locker) | item\_rec1 = Kit (Locker) Retrieved from

# WHAT CAN BE PLACED IN A LOCKER



Office lockers have become increasingly popular, with many of us being fortunate enough to have a personal locker at work. Here is the list of some important things to keep in your locker and accessories you can use to give you the a?|



A locker can be part of a mid-century modern, contemporary, Scandinavian, industrial, vintage and farmhouse interiors, though, depending on the look, you may incorporate it into almost any space. If you place a locker in a kids" space, your children will decorate it even better a?? with magnets, photos or chalking. You can also change the



To remedy this, the RBI recently announced a new rule that allows locker holders to claim compensation. But the new rules make it clear that the liability of the bank is fixed at 100 times the annual rent of the locker only if the contents in the locker are lost due to negligence or fraud committed by the employees, fire, theft, robbery, collapse of the building, etc.



Avoid placing cash locker in any other direction. Never ever, under any circumstance, place the cash locker under any beam as this puts a lot of financial stress on family or business. One of the trick to attract wealth is to place a mirror in front of your cash locker so that the mirror shows an image of cash locker.



Do not place the locker in the north-east, south-east and north-west corner as it can lead to unnecessary expenditure. The locker should be placed at least 1 inch away from the wall and a foot away from the north-west and south-west corners. Windows And Door In Locker Room. Place your locker or almirah in a room that has only one door.



Investing in compliant chemical protection can protect your operation and employees. Fundamentals of Hazardous Chemical Storage. The chemical storage locker's joints must be riveted, welded, or made tight by some other method. While ventilation is not federally required, mechanical

# WHAT CAN BE PLACED IN A LOCKER

---

ventilation can prevent the toxic buildup of flammable

# WHAT CAN BE PLACED IN A LOCKER



Yes, you can: 1. Log in to Ready Returns and fill in the email address used to place the order and the order number (it starts with 319).. 2. Select the item(s) you would like to return. 3. Select the reason of your return. 4. After selecting the item(s), print out the return label and stick it to the outer box so the courier can scan it.



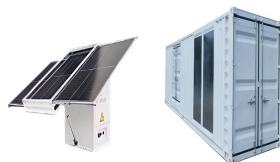
There should not be any mirror in the locker. If the locker is of metal, it should not touch the ground directly. Some wooden piece should be kept below the locker four legs. No items should be kept over and above the locker. Locker should not be kept under any beam or cellar. Doors of the locker should not sound while opening or closing it.



For lockers, scan your QR code to open a locker and put your parcel inside. For shops, show the staff member your QR code to scan, and hand your parcel over, and we'll do the rest. More deets, please. Send your parcels. Sending your a?|



A small fountain in the room can also be placed which can help in receiving more financial benefits. The chances of your wealth increasing may double if a mirror is placed in front of the locker that reflects itself. It is a sign of good omen and luck! Also Read: Auspicious Muhurats 2024: Know all Important Dates and Timings



The Wall Locker is a smaller version of the Locker which provides storage. It is constructed with the Habitat Builder and can be placed inside the Cyclops or a Seabase module. One of the main differences between the Wall Locker and the normal Locker is its ability to be wall mounted and to come with customizable text options. They have (5x6) 30 item slots, and attempting to a?|

# WHAT CAN BE PLACED IN A LOCKER



If you have a cash locker in an office or shop, you can place a mirror in front of it, to attract wealth and double the prosperity. Alternatively, you can keep the mirror inside the locker, in a way that it reflects the cash kept inside. Clean the mirror regularly and keep it stain-free. It should not reflect a distorted image of the locker.



Locker room is a place where we keep our cash and valuables. According to Vastu locker room should be kept in southwest direction for better safety and security. Avoid placing any deity or idol in the valuable room or you can just put a small mirror in a?



Vastu For Locker Room - Being financial strong and stable is important in life which one can achieve with Vastu for locker room. It mention about the ideal location, direction, color and other remedies for the locker room to attract the positivity and good luck in your financial life. When you place the locker in this particular direction



According to Vastu, a locker should be placed in the north direction as it belongs to Lord Kuber, the God of wealth. Even the door of the locker room or the room where the locker has been placed should be north or east facing. a?c A large safe can be placed in the south, south-west or west sides of the house. However, it should be kept in



The local authority having jurisdiction (usually a fire marshal) will determine the number based on specific criteria such as ingress and egress, fire suppression / water sprinkler systems, etc. They can mandate whether zero, one, or three cabinets may be placed in any given area. They will also determine how far apart they need to be placed.



Hey! Used to talk with this team internally all the time a few years back. They can extend up to a week out before they usually pick it back up. As long as the locker is in a less busy/residential area it should be okay but high traffic cities a 2-4 days extension is a?



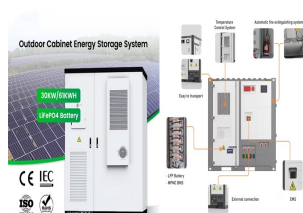
# WHAT CAN BE PLACED IN A LOCKER



Flammable cabinets should not be placed in such a way that limits or prevents people from using exits, stairs, walkways, or doors. Certain categories of flammable liquids may not be allowed to be stored in basements. Many people choose to place their flammable cabinets under fume hoods. This makes it more convenient to use flammable or



So, the mail carrier can place your larger package into the locker system. There are typically several parcel lockers within a cluster box unit, and sometimes there are lockers of varying sizes. When the mail delivery occurs, the carrier can a?)



Knowing what you can keep in a storage locker will help you make informed decisions about what items to put in storage. Visit our website to find out more. Call us: 604-776-1114 Book Online Pay Online. Most electronics and appliances can be placed in a storage locker, as long as they are not left plugged in while being stored.



Parcel lockers, also called smart lockers or package lockers, are secure, automated storage units in centralized locations. They are revolutionizing how goods can be delivered and received. As a technologically enhanced version of a traditional locker, a smart locker incorporates digital and IoT (Internet of Things) features to make package management a?)



In fact, most fire marshals frown upon any item being placed on top of a flammable safety cabinet. Requirements for placing other items near a flammable cabinet can vary depending upon the classes of flammable liquids being stored, but as a rule of thumb, other cabinets should be at least 30 feet from a flammable storage locker.



The Quantum Locker is a deployable storage container, similar to the Waterproof Locker. It is crafted using the Fabricator. All Quantum Lockers share the same contents. The Quantum Locker can be placed in the ocean and on land, but it cannot be placed inside of Seabases. When

# WHAT CAN BE PLACED IN A LOCKER

---

placed on land it floats above the ground, and floats in place when placed in the water. It can store up a?|



# WHAT CAN BE PLACED IN A LOCKER



The quantity of combustible material in any one book locker is not really that great, and also consider that a fire in a steel locker can only spread to adjacent lockers quite slowly (by conduction). Unless all the doors are also forced open as well by the arsonist, the supply of oxygen to the others is going to be very poor.

APPLICATION SCENARIOS



Hi .my work place has decided to lock the staff room to keep staff out when not on dinners. They do provide a locker for all staff but have decided to lock the full staff room.. If we need to get into the room we have to a?|



You can use a variety of Royal Mail services at our lockers, including: Tracked Returns; 1st Class (including 1st Class Signed For) Only items with a barcode can be dropped off at a parcel locker as stated on the screen of the locker when you post. Your item will be returned back to you if it is posted without a label.



Locker; Construction; Placed with {{{placed\_with\_item}}} Placed on {{{placed\_on\_grid}}} v; t; e; Description . The Locker allows for storage of items, and can be opened and closed. It has the capacity to store 30 different items, which can be quite useful in the early stages of the game, where storage is limited.