

WHAT DOES 182KWH OF SOLAR POWER GENERATION MEAN



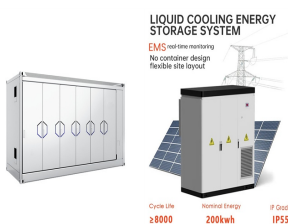
Having solar panels will be a huge advantage to any homeowner as you'll be using your "own" energy and might even be paid by an energy supplier for surplus electricity. Solar panels can produce an average of 1.5kWh a day. Learn more about the kWh that solar panels can produce in your article on the advantages and disadvantages of solar panels



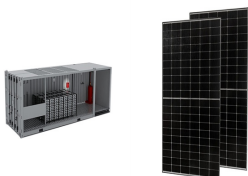
In simple terms, KWp refers to the maximum power output capability of a solar panel or solar system. Each solar panel is assigned a KWp rating by the manufacturer, representing the energy it can generate at its ???



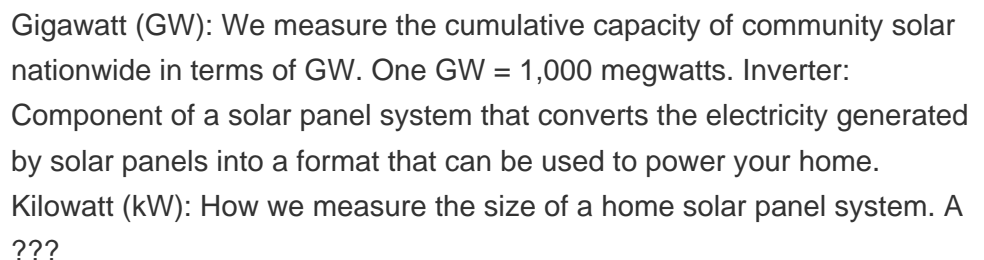
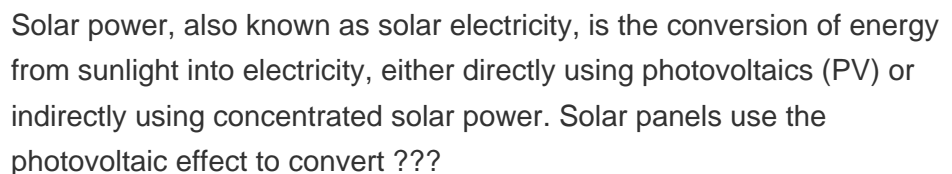
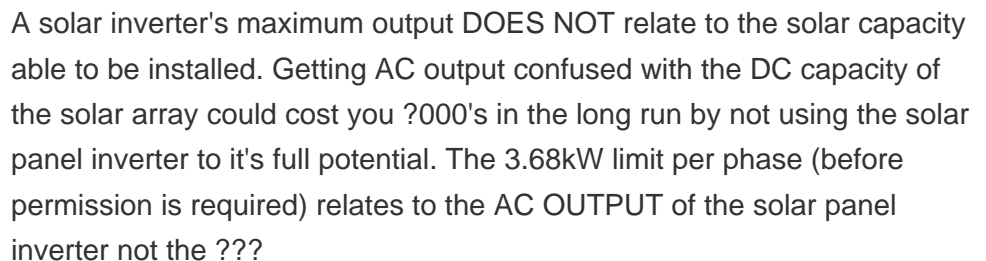
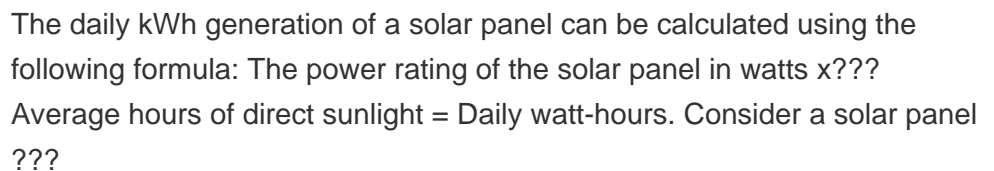
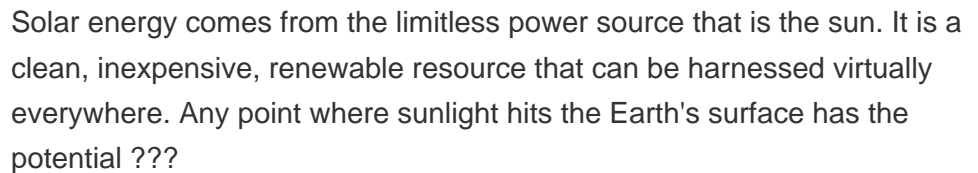
When you talk about efficiency, it's important to distinguish between panel efficiency (or conversion efficiency), cell efficiency, and system efficiency. Your figure of 48% efficiency based on 24 hours doesn't make any sense in the context of solar power, unless you're comparing to other forms of power generation.



1. Find the total solar panel area (A) in square meters by multiplying the number of panels with the area of each panel. 2. Determine the solar panel yield (r), which represents the ratio of the electrical power (in KWp) ???



2 ? The potential for solar energy to be harnessed as solar power is enormous, since about 200,000 times the world's total daily electric-generating capacity is received by Earth every day in the form of solar energy. Unfortunately, though solar energy itself is free, the high cost of its collection, conversion, and storage still limits its exploitation in many places.



WHAT DOES 182KWH OF SOLAR POWER GENERATION MEAN



Average NSW household in Summer ??? electricity consumption versus generation. The average production of a solar PV system in Sydney has been calculated using the online performance calculator for a grid connected system; PVwatts. The attentive eye will notice that a 1.5kW system is only producing just a touch over 1kW of power at its peak.



Average Solar Panel Output Per Day: UK Guide. In 2015, the international solar power market was valued at a little over £72.6 billion ??? now, it's on pace to be worth over £354 billion by the end of 2022. Renewable energy in the UK is still exhibiting strong growth patterns that are on track to continue well into the future for both domestic and commercial use cases.



The nominal power (kWp) is the power of the PV system under standardized conditions (solar irradiation of 1,000 watts per square meter at a temperature of 25 °C). This is measured in kWp (kilowatt peak). So here a 200Wp panel would produce 200Wh. The rated power is given so that solar panels can be compared.



Example using a ~2.5kW solar system: Instantaneous power output vs cumulative energy production over a two-day period. Peak power output is just under 2.3kW (due to standard inefficiencies), while the total amount of energy produced over the two days is just over 33kWh. For battery storage



In general, the amount of power that a solar panel produces is proportional to the amount of sunlight that it receives (Solar Irradiance). For example, consider a solar panel rated at 300 Watts of power. Under the same Solar Irradiance conditions as the ones shown in the image above, the Power Output of a 300W solar panel would look like this:

WHAT DOES 182KWH OF SOLAR POWER GENERATION MEAN



The annual generation of a solar PV system also varies with location in the country. This is due to variations in the level of solar radiation which reaches the ground. Figure 5 shows a map, with parts of the country which have higher levels of solar radiation coloured in red and orange and those with lower levels in blue. A solar PV system on



How Does a DC Direct Current Power Work with a 12kw? A solar system produces DC direct current power which is the type of current that the system generates and flows in a single direction. Most solar panels produce DC power. To use direct current from the solar system, you will need to have an inverter.



How many kWh Per Day Your Solar Panel will Generate? The daily kWh generation of a solar panel can be calculated using the following formula: The power rating of the solar panel in watts x ??? Average hours of direct sunlight = Daily watt-hours. Consider a solar panel with a power output of 300 watts and six hours of direct sunlight per day.



How much power or energy does solar panel produce will depend on the number of peak sun hours your location receives, and the size of a solar panel. just to give you an idea, one 250-watt solar panel will produce about ???



Continuous monitoring, performance optimization, and technological advancements enhance the power generation of solar farms, making them more efficient and contributing to the growth of renewable energy. By implementing advanced tracking systems and high-efficiency solar panels, a solar farm's power output can be increased by 10-20%

WHAT DOES 182KWH OF SOLAR POWER GENERATION MEAN



A 8kW solar system will produce anywhere from 24 to 36 kWh per day (at 4-6 peak sun hours locations). A big 20kW solar system will produce anywhere from 60 to 90 kWh per day (at 4-6 peak sun hours locations). Using this chart and the calculator above, you can pretty much figure out how much kWh does a solar panel or solar system produce per day.



Typically, a modern solar panel produces between 250 to 270 watts of peak power (e.g. 250Wp DC) in controlled conditions. This is called the "nameplate rating", and solar panel wattage varies based on the size and efficiency of your panel. There are plenty of solar calculators, ???

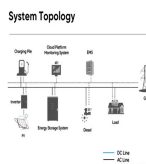


2kW / 5kW
Customizable

Put simply, kWp is the peak power capability of a solar panel or solar system. The manufacturer gives all solar panels a kWp rating, which indicates the amount of energy a panel can produce at its peak performance, such as in the afternoon of a clear, sunny day. (0.8 kWh) per day, per panel. This would mean you'll need around 62, 200-watt



It is a measure of power. Notice that, if you like to keep anal electrical engineers like me happy, the correct way to write it is always with a small k and a capital W. Peak power defines a solar system's size. e.g. a 3 kW system can produce 3 kW of power at solar noon (when the sun is at its strongest) on a perfect solar day:



The Maximum Power Current rating (I_{mp}) on a solar panel indicates the amount of current produced by a solar panel when it's operating at its maximum power output (P_{max}) under ideal conditions. In other words, I_{mp} ???

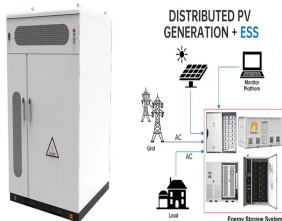
WHAT DOES 182KWH OF SOLAR POWER GENERATION MEAN



With electricity prices constantly rising, homeowners are looking for ways to gain energy independence and take control of their utility bills. Investing in rooftop solar panels allows households to harness the free power ???



Solar radiation may be converted directly into electricity by solar cells (photovoltaic cells). In such cells, a small electric voltage is generated when light strikes the junction between a metal and a semiconductor (such as silicon) or the junction between two different semiconductors. (See photovoltaic effect.) The power generated by a single ???



Let's start with the basics! A watt (W) is a unit of power, and power is the rate at which energy is produced or consumed. A watt measures rates of power over a time period. You could think of watts as a measure of electrical flow. Picture ???



Solar energy technology doesn't end with electricity generation by PV or CSP systems. These solar energy systems must be integrated into homes, businesses, and existing electrical grids with varying mixtures of traditional and other renewable energy sources. are building large solar power plants to provide energy to all customers