

WHAT DOES ENERGY STORAGE MODULE MEAN



What is a battery energy storage system? While consumers often think of batteries as small cylinders that power their devices, large-scale battery storage installations known as battery energy storage systems (BESS) can rival some pumped hydro storage facilities in power capacity.



What are the components of an energy storage system? Here are the main components of an energy storage system: Battery/energy storage cells??? These contain the chemicals that store the energy and allow it to be discharged when needed. Battery management system (BMS) ??? Monitors and controls the performance of the battery cells. It monitors things like voltage, current and temperature of each cell.



What is energy storage? Energy storage is the capturing and holding of energy in reserve for later use. Energy storage solutions for electricity generation include pumped-hydro storage, batteries, flywheels, compressed-air energy storage, hydrogen storage and thermal energy storage components.



What are the critical components of a battery energy storage system? In more detail, let's look at the critical components of a battery energy storage system (BESS). The battery is a crucial component within the BESS; it stores the energy ready to be dispatched when needed. The battery comprises a fixed number of lithium cells wired in series and parallel within a frame to create a module.



What is a full battery energy storage system? A full battery energy storage system can provide backup power in the event of an outage, guaranteeing business continuity. Battery systems can co-locate solar photovoltaic, wind turbines, and gas generation technologies.

WHAT DOES ENERGY STORAGE MODULE MEAN



What is energy storage system (ESS)? Components What is ESS? An Energy Storage System (ESS) is a specific type of power system that integrates a power grid connection with a Victron Inverter/Charger, GX device and battery system. It stores solar energy into your battery during the day for use later on when the sun stops shining.



How Does a Battery Energy Storage System Work? A battery storage system uses electrochemical devices to store electrical energy. It captures energy in a reversible chemical reaction (charging) and releases it when needed (discharging). When combined and enclosed in a frame, several cells make a module. Depending on the required capacity



As a result, demand for energy storage systems is also on the rise. A critical component of any successful energy storage system is the power conversion system (PCS). The PCS is the intermediary device between the storage element, typically large banks of (DC) batteries, and the (AC) power grid.

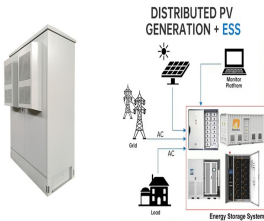


Battery technologies used for energy storage. At the start of 2020, BESSs accounted for around 5% of the global energy storage capacity, significantly less than pumped-storage hydro. According to Fortune Business Insights, the battery energy storage market size is expected to reach \$19.74 billion at 20.4% CAGR globally by 2027. Given the availability, ???



An example of BESS components - source Handbook for Energy Storage Systems . PV Module and BESS Integration. As described in the first article of this series, renewable energies have been set up to play a major role in the future of electrical systems. The integration of a BESS with a renewable energy source can be beneficial for both the

WHAT DOES ENERGY STORAGE MODULE MEAN



The vast majority of energy storage systems installed at homes and businesses in the US are paired with solar. In fact, according to research from Lawrence Berkeley National Laboratory (LBNL), through 2019, 70% of all behind-the-meter storage is paired with solar. And there's a good reason for this trend: Most people install batteries for backup, and if you install ???



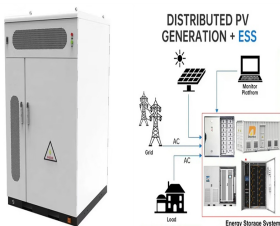
The BMS will also control the recharging of the battery by redirecting the recovered energy (i.e., from regenerative braking) back into the battery pack (typically composed of a number of battery modules, each composed of a number of cells).; Battery thermal management systems can be either passive or active, and the cooling medium can either be air, liquid, or some form of ???



Energy storage is the capture of energy produced at one time for use at a later time [1] to reduce imbalances between energy demand and energy production. A device that stores energy is generally called an accumulator or battery. Energy comes in multiple forms including radiation,



Energy storage involves converting energy from forms that are difficult to store to more conveniently or economically storable forms. Some technologies provide short-term energy storage, while others can endure for much longer. Bulk ???



Examples of sustainable energy sources include wind, solar and water (hydropower). All of which can be considered inexhaustible and widely available to almost everyone. Geothermal energy can also be included as a sustainable alternative energy source. Geothermal energy creates usable energy from the planet's internal energy sources, such as

WHAT DOES ENERGY STORAGE MODULE MEAN



BESS is a stationary energy storage system (ESS) that stores energy from the electricity grid or energy generated by renewable sources such as solar and wind. This arrangement together constitutes a module. Many modules are racked (connected) together in series and/or parallel to achieve the desired voltage and capacity of the overall BESS



A distributed energy resource (DER) is a small-scale unit of power generation that operates locally and is connected to a larger power grid at the distribution level. DERs include solar panels, small natural gas-fueled generators, electric vehicles and controllable loads, such as HVAC systems and electric water heaters.



The storage modulus G' from the data and the SGR model match each other well even up to $\omega \tau \approx 1$ where we cannot expect good agreement. This promising behavior also gives us the interpretation that mechanistically the cytoskeleton possesses a linear log-log relaxation-time spectrum and further that for the storage modulus the cytoskeleton is well modeled by the λ



Understanding how a solar battery works is important if you're thinking about adding solar panel energy storage to your solar power system. Because it operates like a large rechargeable battery for your home, you can take advantage of any excess solar energy your solar panels create, giving you more control over when and how you use solar



Tehachapi Energy Storage Project, Tehachapi, California. A battery energy storage system (BESS) or battery storage power station is a type of energy storage technology that uses a group of batteries to store electrical energy. Battery storage is the fastest responding dispatchable source of power on electric grids, and it is used to stabilise those grids, as battery storage can λ

WHAT DOES ENERGY STORAGE MODULE MEAN



??? Energy Density (Wh/L) ??? The nominal battery energy per unit volume, sometimes referred to as the volumetric energy density. Specific energy is a characteristic of the battery chemistry and packaging. Along with the energy consumption of the vehicle, it determines the battery size required to achieve a given electric range.



The cost of acquiring a hardware security module (HSM) device often poses a significant financial barrier for businesses. A report published by Security Today in 2018 highlighted that the deployment cost for a single HSM device could range from \$30,000 to \$40,000. Moreover, this expense does not cover additional aspects like support and



3.7se of Energy Storage Systems for Peak Shaving U 32 3.8se of Energy Storage Systems for Load Leveling U 33 3.9ogrid on Jeju Island, Republic of Korea Micr 34 4.1rice Outlook for Various Energy Storage Systems and Technologies P 35 4.2 Magnified Photos of Fires in Cells, Cell Strings, Modules, and Energy Storage Systems 40



The module can be swapped out for another with no downtime. Sensors ensure safe operation and allow for remote monitoring. Onboard sensors help maintain appropriate operating temperatures, watch for battery module failure, and report usage data to you and your energy company. Control components mean energy storage systems can be set up



A battery energy storage system (BESS) captures energy from renewable and non-renewable sources and stores it in rechargeable batteries (storage devices) for later use. A battery is a ???

WHAT DOES ENERGY STORAGE MODULE MEAN

114KWh ESS



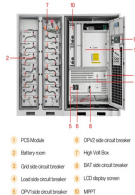
Exploring solar tech reveals the solar panel element as crucial. It greatly influences a system's efficiency. Especially in India's energy market, photovoltaic panel modules are key in capturing solar power. But what impact does a single solar energy module have on efficiency? Fenice Energy shows how these components boost solar power and push us ???



The energy storage system of most interest to solar PV producers is the battery energy storage system, or BESS. While only 2???3% of energy storage systems in the U.S. are BESS (most are still hydro pumps), there is an increasing move to ???



Energy Storage System introduction, examples and diagrams. A separate document that provides further introductory information, overviews, and system examples is available to download here. Advanced control options. A separate document that provides further information on ESS mode 2 and 3 as advanced control option See is available to download here.



When thinking about energy storage systems (ESS), it's essential to understand the primary components and processes involved in their functioning. This friendly guide will break down how they work, specifically ???



How does a PCS work? To achieve the bidirectional conversion of electric energy, a power conversion system is a component connected between the energy storage battery system and the power grid. The PCS charges the batteries in the event of excessive power generation. The PCS provides the power with the stored energy if the grid need extra ???

WHAT DOES ENERGY STORAGE MODULE MEAN



An energy storage module is not a new concept, and the available technology in most modern large storages uses some form of a fixed module to form large packs [12, 71]. However, with the ever-decreasing cost of power electronics, interest in reconfigurable storage systems in high-power,



levels of renewable energy from variable renewable energy (VRE) sources without new energy storage resources. 2. There is no rule-of-thumb for how much battery storage is needed to integrate high levels of renewable energy. Instead, the appropriate amount of grid-scale battery storage depends on system-specific characteristics, including:



Chemical energy storage: Chemical energy storage includes hydrogen and other hydrogen-rich chemical energy carriers produced from diverse domestic energy sources (such as fossil, nuclear, and renewables) for use in various energy storage applications. Furthermore, distributed generation (DG) power systems play a critical role in ESS adoption.



What Is Bluetooth Low Energy? Bluetooth Low Energy is based on Bluetooth. It was released in 2011, and it is also referred to as Bluetooth Smart and Bluetooth 4.0. BLE is designed to offer many of the same features as Bluetooth but focusing on low power. As a result, it is not as fast as Bluetooth and is not suitable for transferring large files.



What does OEM mean for solar module companies? The use of OEMs has been common across manufacturing by large, well-known for years. For instance, your iPhone is made by an OEM. Mukesh Sethi, Director of Panasonic's Solar and Energy Storage Division, notes that Panasonic has its own extensive quality control program. "Before we choose an

WHAT DOES ENERGY STORAGE MODULE MEAN



Monitoring battery pack current and cell or module voltages is the road to electrical protection. The electrical SOA of any battery cell is bound by current and voltage. An entire battery energy storage system, often referred to as BESS, could be made up of tens, hundreds, or even thousands of lithium-ion cells strategically packed together