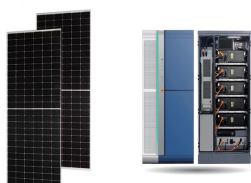


# WHAT DOES IP65 MEAN FOR SOLAR PANELS



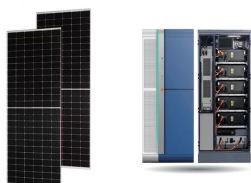
What are the IP65 and IP68 protection ratings for solar panels? The majority of solar junction boxes have at least an IP65 rating. A quality solar panel junction box has an IP67 or IP68 rating. So, what do IP65, IP67, and IP68 protection ratings mean? A solar panel junction box with an IP65 rating will provide complete protection against dust and cannot be damaged by low-pressure water jets.



Is IP65 solar lighting waterproof? Therefore, a solar lighting unit with an IP65 rating will not allow any dust ingress and is water-resistant. So, you can install IP65 solar lighting in dusty areas, and heavy rainfall won't affect its operation. Although many people refer to IP65 as being waterproof, it can't withstand immersion in water entirely.



Does an IP65 solar light allow dust? An IP65 waterproof solar light will not allow dust in the unit or water ingress from a nozzle. First of all, the number six on the IP65 rating means that the solar lighting unit can be installed in outdoor areas where a lot of dust, dirt, or moving debris is an issue. So, you can be sure the unit is dust-tight.

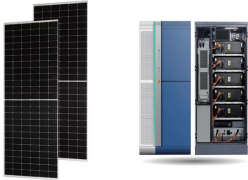


Are solar lights IP65 rated? First of all, the number six on the IP65 rating means that the solar lighting unit can be installed in outdoor areas where a lot of dust, dirt, or moving debris is an issue. So, you can be sure the unit is dust-tight. The second number, five, means that water won't get into the unit.

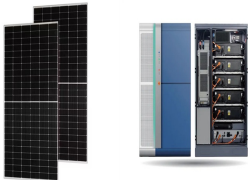


What is the difference between IP44 and IP65 rated outdoor lighting? An IP65 rating provides a higher degree of protection than IP44, meaning that your product is fully protected against solid particles and against low pressure water jets from any direction. IP65 rated is a common level of protection for outdoor lighting that will be exposed to all weather conditions.

# WHAT DOES LP65 MEAN FOR SOLAR PANELS



What is the difference between IP65 and IP67 LED lights? The enclosure with an IP65 rating means it gives protection against low-pressure water jets. The IP65 waterproof casing is suitable for most outdoor LED lights because it won't encounter extreme weather such as flooding. On the other hand, IP67 offers much more protection against liquid ingress in the harshest of weather conditions.



Regular maintenance will prevent some of the situations that cause inverter failure and improve the lifespan of your inverter. But generally, solar inverters don't outlast solar panels. While solar panels have a 25 to 30 years lifespan, inverters



Gigawatt (GW): We measure the cumulative capacity of community solar nationwide in terms of GW. One GW = 1,000 megawatts. Inverter: Component of a solar panel system that converts the electricity generated by solar panels into a format that can be used to power your home. Kilowatt (kW): How we measure the size of a home solar panel system. A typical home system is 5-10 kW.



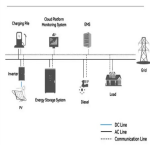
A solar panel junction box with an IP65 rating will provide complete protection against dust and cannot be damaged by low-pressure water jets. There may be limited ingress inside, but it stops the component from getting wet.



In recent years, solar energy has gained significant traction as a clean and sustainable alternative to conventional power sources. Among the numerous advancements in solar technology, the 10bb solar panel has emerged as a noteworthy innovation. With its enhanced efficiency and impressive features, this cutting-edge solar panel has revolutionized the industry.

# WHAT DOES IP65 MEAN FOR SOLAR PANELS

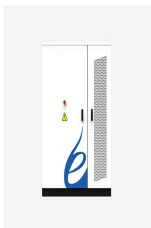
System Topology



What Does A 10 Kw Solar Panel System Mean? A 10 kilowatt (kW) solar panel system means that the system is composed of solar panels that together can produce up to 10 kilowatts of electricity. This system would typically be able to produce between 11,000 and 15,000 kilowatt hours (kWh) of electricity per year, depending on the location and the amount of ???



Foldable Solar Panel PV120S 200W; Foldable Solar Panel MP200 200W; Foldable Solar Panel PV350 350W; Shop All Solar Panel. Learn More. Expansion Battery. New. What Does IP65 Mean? Back to blog News You will run across the word "IP65" when choosing electronic equipment or enclosures. Knowing the IP65 rating is essential since it guarantees



A red or orange-coloured light during the day would mean the solar system is faulty. How to check if my solar panels are working. Whether you have solar panels on your roof or are thinking about going solar, it's essential to monitor your solar system. This will let you know if the solar power system is running correctly.



2MW / 5MW  
Customizable

Selecting the right junction box with an appropriate IP rating is crucial for the longevity and efficiency of your solar panel system. For most outdoor applications, an IP65 rating offers sufficient protection against dust and water ???



With the term "IP65" applied to their package, it's waterproof and solid enough to easily go through the bad weather, such as wind, rain and snow. Then, equipped with 8 LED chips and ???

# WHAT DOES LP65 MEAN FOR SOLAR PANELS



What Is the IP Rating of EcoFlow Solar Panels? By definition, solar panels have to be weather resistant. PV panels work by capturing the sun's rays and converting solar energy to usable electricity with a portable power station or other balance of system.. Without exposure to the great outdoors, solar panels are as useful at producing electricity as bricks.



A solar panel optimiser is a device that helps maximise the efficiency of your solar panels by individually optimising the output of each panel. Imagine your solar panel system as a sports team. Usually, if one player (well, panel) has an off day where it's shaded or a bit crusty, the entire solar team's output and performance will dip.



What does Bankability of solar panels mean? Bankability, in simpler terms, refers to how guaranteed it is to bring in a profit. For example, According to BNEF's 2020 Q1 list, Jinko was labelled as the most bankable solar panel. Tier 1 solar panels have the reputation of delivering performance that translate into results via reliable returns.



This calculation is very useful during installing larger solar panel systems. Also See: Enphase IQ7 vs IQ8: Exploring the Next Generation of Solar Microinverters. 2. Output Specifications. Now, let us learn about the AC power the inverter generates from the output of the solar panel, which is what we use to power our appliances. A. Nominal AC



What is IP65 ??? IP65 denotes total protection against dust intrusion and against low-pressure water jets from any direction. IP65 LED lights are ideal for bathroom lighting. What is IP67? ??? This rating implies total ???

# WHAT DOES LP65 MEAN FOR SOLAR PANELS



What does an "IP Rating" Mean? As an international standard, IP Ratings describe the environmental protection that a product has from particles and liquids. We will recommend a solution using our own British made wind turbines, best-in-class solar panels and deep-cycle batteries. Contact Information.



Solar Panel Information. The display will generally show the power being generated by your solar panels at any given moment (the power output), usually in Watts, or equal to 1000 times the number of kilowatts.



Typical Values: For a standard 60-cell solar panel, Voc typically ranges from 30V to 40V. The Role of Voc in Solar Panel Characterization. Voc is a key parameter in characterizing solar panels and understanding their electrical behavior. It is used to determine the panel's maximum potential and is crucial for system design and optimization



Photovoltaic (PV) Cell Functionality: PV cells in solar panels can absorb photons to create electricity, even in low-light or shaded conditions.; Efficiency in Various Light Conditions: . Direct Sunlight: Offers optimal performance for solar panels.; Indirect Sunlight: Panels can still produce a significant portion of their potential output.; Shade: Panels generate less electricity, but

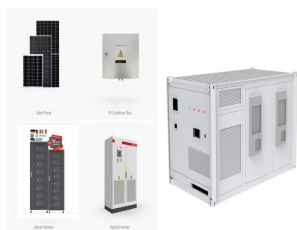


Solar panel tiers are broken down into a three-tiered system with solar panels rated as either tier 1, tier 2, or tier 3. Many people would naturally assume that tier 1 solar panels are the best on the market in terms of performance and efficiency.

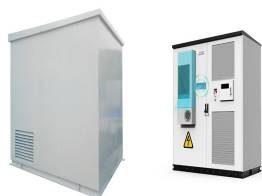
# WHAT DOES LP65 MEAN FOR SOLAR PANELS



When we talk about solar panel ratings, we most often talk about wattage. Wattage is simply how much electricity a solar panel can produce under perfect test conditions, known in the industry as standard test conditions (STC).. STC is basically perfectly sunny skies and perfect weather. Obviously, in real life, solar panels are installed in a variety of locations with different weather



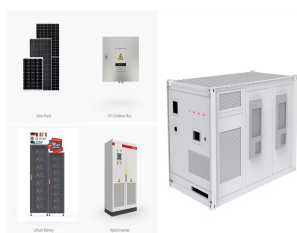
Solar lights Solar String Lights 1.5 Watt 2 Watt 7 Watt Black Solar lights White Solar lights Grey Solar lights Solar Gardenspike lights All Solar lights Wall lights IP65 - Wet spaces IP54 - Wet spaces IP44 - Moist spaces E27 Socket GU10 Socket Lightsource included Lightsource excluded Dimmable Smart With motion sensor Solar Wall Lamp All Wall lights



Think about that for a second. The panel temperature is the temperature that the actual solar panel itself will get to when it is on your roof. This temperature is critical because all solar panels lose efficiency as they ???



Check the IP rating of your solar panels to see how well they can handle water and dust. The higher the IP rating, the more protected they are against water. Common ratings for solar panels include IP65, IP66, IP67, and ???



IP65 Waterproofing for Solar Lighting Explained. Using the IP65 rating as an example, let's see how this can help you choose the best type of solar LED lights for security, ambient lighting, or to illuminate your yard. An IP65 "waterproof" ???



# WHAT DOES LP65 MEAN FOR SOLAR PANELS



In this guide to the IP68 certification, our experts here at Solareye explain what the IP rating system is, why it is important and the benefits of IP68 certified products such as our Solareye(R)80 outdoor solar lighting. What Does IP68 Mean? To understand the significance of IP68, the IP coding system must first be explained. IP Code



When you purchase solar panels, they come with a rated power wattage, typically between 100W and 400W per panel. Rated power indicates the maximum amount of electricity a solar panel can capture under ideal ???



To calculate the KWp (kilowatt-peak) of a solar panel system, you need to determine the total solar panel area and the solar panel yield, expressed as a percentage. Here are the steps involved in this calculation: 1. Find the total solar panel area (A) in square meters by multiplying the number of panels with the area of each panel. 2.



For example, a 6.6 kW solar system typically consists of 20 panels each delivering 330W of power. Solar Panel Wattage. Divide the average daily wattage usage by the average sunlight hours to measure solar panel ???