

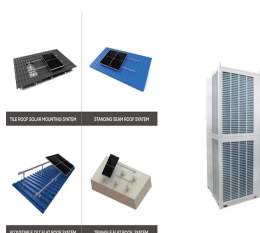
# WHAT DOES THE ENERGY STORAGE SYSTEM INCLUDE



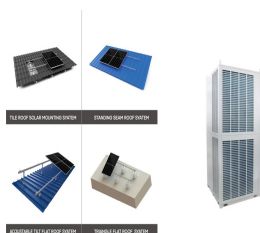
What is energy storage? Energy storage is the capturing and holding of energy in reserve for later use. Energy storage solutions for electricity generation include pumped-hydro storage, batteries, flywheels, compressed-air energy storage, hydrogen storage and thermal energy storage components.



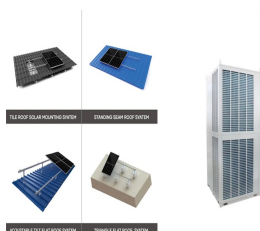
What are the different types of energy storage systems? In the reviewed literature, there are three main types of energy storage systems: battery energy storage system (BESS), including plug-in electric vehicle (PEV), thermal energy storage system (TESS), and hydrogen storage system (HSS). See Table 2 for a summary of the studies which include the various type of energy storage.



How do energy storage systems work? Energy storage systems store energy in different forms and of different qualities. Energy may be transformed into other forms and stored and converted back into the desired form of use. Energy storage systems are classified based on the application (final utilization) and the type of storage system.



Why do we need energy storage systems? When you turn on a hairdryer in your home, somewhere, an electricity generation plant is turning up just a tiny bit to keep the grid in balance. Energy storage systems allow electricity to be stored???and then discharged???at the most strategic times.

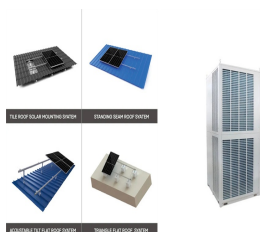


How can energy be stored? Energy can also be stored by making fuelssuch as hydrogen,which can be burned when energy is most needed. Pumped hydroelectricity,the most common form of large-scale energy storage,uses excess energy to pump water uphill,then releases the water later to turn a turbine and make electricity.

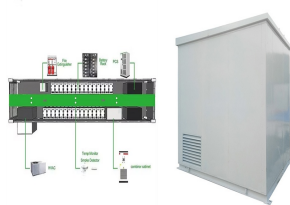
# WHAT DOES THE ENERGY STORAGE SYSTEM INCLUDE



How ESS can be classified based on the form of energy stored? ESSs can be classified according to the form of energy stored, their uses, storage duration, storage efficiency, and so on. This article focuses on the categorisation of ESS based on the form of energy stored. Energy can be stored in the form of thermal, mechanical, chemical, electrochemical, electrical, and magnetic fields.



The European Investment Bank and Bill Gates's Breakthrough Energy Catalyst are backing Energy Dome with ???60 million in financing. That's because energy storage solutions are critical if Europe is to reach its climate goals. Emission-free energy from the sun and the wind is fickle like the weather, and we'll need to store it somewhere for use at times when nature ???



Battery Energy Storage System Components. BESS solutions include these core components: Battery System or Battery modules ??? containing individual low voltage battery cells arranged in racks within either a module or container enclosure. The battery cell converts chemical energy into electrical energy.



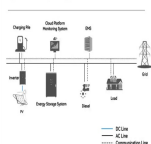
It can include (but is not limited to) batteries, capacitors, and kinetic energy devices (e.g., flywheels and compressed air). Several of these systems can have AC or DC output for utilization. Flow battery energy storage systems . Flow battery energy storage system requirements can be found in Part IV of Article 706. In general, all



The U.S. energy storage market is growing at a rapid rate. In 2020, the market surpassed \$1.5 billion and is expected to become an \$8.9 billion annual market by 2026. With this significant growth, it's important that contractors understand what energy storage is, why it's important, what problems it's solving, and what opportunities there are to leverage energy ???

# WHAT DOES THE ENERGY STORAGE SYSTEM INCLUDE

System Topology

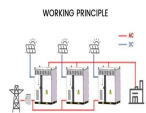


A battery energy storage system (BESS) contains several critical components. This guide will explain what each of those components does.

This BMS includes a first-level system main controller MBMS, a second-level battery string management module SBMS, and a third-level battery monitoring unit BMU, wherein the SBMS can mount up to 60 BMUs.



The framework for categorizing BESS integrations in this section is illustrated in Fig. 6 and the applications of energy storage integration are summarized in Table 2, including standalone battery energy storage system (SBESS), integrated energy storage system (IESS), aggregated battery energy storage system (ABESS), and virtual energy storage



The emergency energy storage system encompasses several critical components including 1. energy storage technologies, 2. power management systems, 3. integration with renewable sources, 4. safety protocols, and 5. scalability options. Each aspect serves unique functions and contributes to the overall efficacy of the emergency energy ???



In many systems, battery storage may not be the most economic . resource to help integrate renewable energy, and other sources of system flexibility can be explored. Additional sources of system flexibility include, among others, building additional pumped-hydro storage or transmission, increasing conventional generation flexibility,



Energy storage technology encompasses a diverse array of systems and methods designed to capture, hold, and release energy for various applications. 1. Key technologies include batteries, flywheels, compressed air energy storage, and thermal energy storage, which allow for efficient management of energy flow. 2.

# WHAT DOES THE ENERGY STORAGE SYSTEM INCLUDE



How does energy storage decrease consumer costs? Thermal energy storage mediums could include molten salt, molten aluminum, molten silicon etc. Pumped thermal energy storage systems consist of a hot and cold store, compressors, turbines and generators. Storage Type: Thermo-Mechanical



This includes recording vital electrical operating parameters as well as electrolyte levels, internal cell temperature, and ambient battery enclosure temperature. This involves knowing the BMS and PCS limitations and recognizing when the energy storage system can be used most effectively. The programmed behavior and sophistication of the



Types of battery energy storage systems. Well, a battery energy storage system is divided into two main types: residential and commercial. Let's look at what makes both different from each other and where they are installed. 1. Residential BESS. As the name depicts, it is a small-scale system of energy storage batteries.



Electric energy storage includes various systems like batteries, pumped hydroelectric storage, and flywheels. Applications span from enhancing grid stability to renewable energy integration. Performance metrics such as efficiency, lifespan, and capacity are vital for evaluating energy storage systems.



Energy storage systems for electricity generation operating in the United States Pumped-storage hydroelectric systems. Pumped-storage hydroelectric (PSH) systems are the oldest and some of the largest (in power and energy capacity) utility-scale ESSs in the United States and most were built in the 1970's. PSH systems in the United States use electricity from electric power grids to ???

# WHAT DOES THE ENERGY STORAGE SYSTEM INCLUDE



Integrated energy storage technology encompasses various advanced methods aimed at efficiently storing energy for later use. 1. It includes multiple storage systems, aiming to optimize energy distribution from renewable sources. 2. This technology amplifies grid stability, providing backup during peak demand. 3.



These energy storage systems store energy produced by one or more energy systems. They can be solar or wind turbines to generate energy. Application of Hybrid Solar Storage Systems. Hybrid Solar Storage Systems are mostly used in, Battery; Invertor Smart meter; Read, More. What is Energy? Kinetic Energy; FAQs on Energy Storage. Question 1



Battery energy storage systems, or BESS, are a type of energy storage solution that can provide backup power for microgrids and assist in load leveling and grid support. There are many types of BESS available depending on your needs and preferences, including lithium-ion batteries, lead-acid batteries, flow batteries, and flywheels.



3. INVERSE SYSTEMS. The working of a life energy storage system is accentuated by the utilization of inverse systems, which convert stored energy back into usable power. These systems can vary based on the energy type being stored; for instance, electric energy stored in batteries is typically transformed back into electrical form using



Examples of chemical energy storage systems include batteries, flow batteries, and fuel cells. Mechanical (kinetic and potential) energy storage systems include pumped storage hydropower, flywheels, and pressurized gas storage systems. Thermal energy can be stored as a molten salt and is also mainly used for large-scale systems.

# WHAT DOES THE ENERGY STORAGE SYSTEM INCLUDE



BESS is a stationary energy storage system (ESS) that stores energy from the electricity grid or energy generated by renewable sources such as solar and wind. The BESS as a system includes both hardware and software, which can be internal or external. The following are the constituents of the BESS:



Energy storage is an indispensable facet of photovoltaic systems, particularly for ensuring energy availability during periods of low sunlight or high demand. Energy storage technologies have evolved over the years, with lithium-ion batteries gaining prominence due to their high energy density, efficiency, and declining costs.



OverviewMethodsHistoryApplicationsUse casesCapacityEconomicsResearch



In the past few decades, electricity production depended on fossil fuels due to their reliability and efficiency [1]. Fossil fuels have many effects on the environment and directly affect the economy as their prices increase continuously due to their consumption which is assumed to double in 2050 and three times by 2100 [6] g. 1 shows the current global ???



The report includes six key conclusions: Storage enables deep decarbonization of electricity systems. Energy storage is a potential substitute for, or complement to, almost every aspect of a power system, including generation, transmission, and demand flexibility. Storage should be co-optimized with clean generation, transmission systems, and



# WHAT DOES THE ENERGY STORAGE SYSTEM INCLUDE



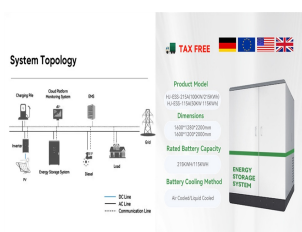
Energy storage systems play an essential role in today's ever-changing energy landscape. With the increasing demand for integration of renewable energy sources and the need for grid stability, energy storage has emerged as a vital component, which is why understanding how it works is so important. In this article, we will delve into the world of energy storage systems, exploring their



A thermal management system, which can include air or liquid cooling, Dr. Georg Angenendt is a scientist and entrepreneur with expertise in mobility and utility-scale battery energy storage systems (BESS). His research on testing, modeling, commissioning, and optimization of battery storage systems has been published in international



The type of energy storage system that has the most growth potential over the next several years is the battery energy storage system. The benefits of a battery energy storage system include: Useful for both high-power and high-energy applications; Small size in relation to other energy storage systems;



Energy storage is key to secure constant renewable energy supply to power systems ??? even when the sun does not shine, and the wind does not blow. Energy storage provides a solution to achieve flexibility, enhance grid reliability and power quality, and accommodate the scale-up of renewable energy. But most of the energy storage systems ???



Energy storage systems allow electricity to be stored???and then discharged???at the most strategic and vital times, and locations. Co-Located BESS. Co-located energy storage systems are installed alongside renewable generation sources such as solar farms. Co-locating solar and storage improves project efficiency and can often reduce total

# WHAT DOES THE ENERGY STORAGE SYSTEM INCLUDE

---



This article is a guide to battery energy-storage system components, what they are, their essential functions, and more. These battery energy-storage system components include circuit breakers, switches, and similar equipment. Protective devices shield the system from electrical faults, and various kinds of switchgear ensure safe