

# WHAT IS A COMPOSITE ENERGY STORAGE SYSTEM



How are structural composites capable of energy storage? This work presents a method to produce structural composites capable of energy storage. They are produced by integrating thin sandwich structures of CNT fiber veils and an ionic liquid-based polymer electrolyte between carbon fiber plies, followed by infusion and curing of an epoxy resin.



What are structural composite energy storage devices (scesds)? Structural composite energy storage devices (SCESDs), that are able to simultaneously provide high mechanical stiffness/strength and enough energy storage capacity, are attractive for many structural and energy requirements of not only electric vehicles but also building materials and beyond .



How can multifunctional composites improve energy storage performance? The development of multifunctional composites presents an effective avenue to realize the structural plus concept, thereby mitigating inert weight while enhancing energy storage performance beyond the material level, extending to cell- and system-level attributes.



Are structural composite batteries and supercapacitors based on embedded energy storage devices? The other is based on embedded energy storage devices in structural composite to provide multifunctionality. This review summarizes the reported structural composite batteries and supercapacitors with detailed development of carbon fiber-based electrodes and solid-state polymer electrolytes.



How do energy storage composites containing lithium-ion batteries perform? The mechanical performance of energy storage composites containing lithium-ion batteries depends on many factors, including manufacturing method, materials used, structural design, and bonding between the structure and the integrated batteries.

# WHAT IS A COMPOSITE ENERGY STORAGE SYSTEM



What are potential applications for energy storage composites containing integrated lithium-ion batteries? Potential applications are presented for energy storage composites containing integrated lithium-ion batteries including automotive, aircraft, spacecraft, marine and sports equipment.



An innovative architecture is presented that combines energy-dense and power-dense battery packs through a supercapacitor that provides capacitive coupling and a low-power DC-DC converter that provides energy balancing. A sizing algorithm is developed to optimize the design of such systems for plug-in hybrid and battery electric vehicles (PHEVs and BEVs). The ???



An overview of system components for a flywheel energy storage system. Fig. 2. A typical flywheel energy storage system [11], which includes a flywheel/rotor, an electric machine, bearings, and power electronics. Fig. 3. The Beacon Power Flywheel [12], which includes a composite rotor and an electric machine, is designed for frequency



Then, a mathematical model for performance analysis of the hybrid energy electric vehicle is developed in the second part. Energy management strategy of the composite energy system based on wavelet algorithm is elaborated in the third part. Finally, performance analysis of the designed composite energy storage system is presented in the fourth



Energy storage systems are especially beneficial for operations with high electricity demand or fluctuations in usage. Installing an ESS not only cuts energy costs but also improves power quality, making it indispensable for ???

# WHAT IS A COMPOSITE ENERGY STORAGE SYSTEM



Battery Energy Storage Systems (BESS) Definition. A BESS is a type of energy storage system that uses batteries to store and distribute energy in the form of electricity. These systems are commonly used in electricity grids and in other applications such as electric vehicles, solar power installations, and smart homes.



Flywheel energy storage system is an energy storage device that converts mechanical energy into electrical energy. Thus, in 1970, this model had been upgraded by using carbon-fiber composite rotors which had more tensile strength and less heavy. In fact, with the help of modern electronics, this new generation of FESS gives more efficient



energy storage systems, covering the principle benefits, electrical arrangements and key terminologies used. The Technical Briefing supports the IET's Code of Practice for Electrical Energy Storage Systems and provides a good introduction to the subject of electrical energy storage for specifiers, designers and installers.



Energy storage systems (ESSs) are the technologies that have driven our society to an extent where the management of the electrical network is easily feasible. Continuous progress had appeared in the 1980s with fiber composite rotors and low-speed magnetic bearings. 47, 48 Despite the flywheel developments and their effective use, it has



Among the different mechanical energy storage systems, the flywheel energy storage system (FESS) is considered suitable for commercial applications. An FESS, shown in Figure 1, is a spinning mass, composite or steel, secured ???

# WHAT IS A COMPOSITE ENERGY STORAGE SYSTEM



Structural energy storage composites present advantages in simultaneously achieving structural strength and electrochemical properties. Adoption of carbon fiber electrodes and resin structural electrolytes in energy storage composite poses challenges in maintaining good mechanical and electrochemical properties at reasonable cost and effort. Here, we report ???



A need for lightweight energy storage technology is fueling the development of carbon fiber composite materials for car batteries and other electronics. Belzona highlights composite wrap system designed for aqueous environments Belzona 1984, a surface-tolerant epoxy resin, enables repair and restoration of holed, weakened and corroded pipe



Battery Energy Storage Systems (BESS) are pivotal technologies for sustainable and efficient energy solutions. This article provides a comprehensive exploration of BESS, covering fundamentals, operational mechanisms, benefits, limitations, economic considerations, and applications in residential, commercial and industrial (C& I), and utility ???



The resulting multifunctional energy storage composite structure exhibited enhanced mechanical robustness and stabilized electrochemical performance. It retained 97%???98% of its capacity ???

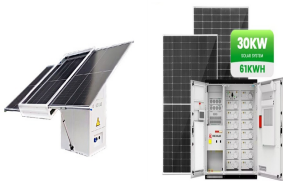


We will refer here to a possible use of cement-based composite???water pair in a seasonal thermal energy storage system for space-heating, where the discharged heat is requested at a minimum

# WHAT IS A COMPOSITE ENERGY STORAGE SYSTEM



The operation of the electricity network has grown more complex due to the increased adoption of renewable energy resources, such as wind and solar power. Using energy storage technology can improve the stability and quality of the power grid. One such technology is flywheel energy storage systems (FESSs). Compared with other energy storage systems, ???



Structural composite energy storage devices (SCESDs) which enable both structural mechanical load bearing (sufficient stiffness and strength) and electrochemical energy storage (adequate capacity) have been developing rapidly in the past two decades. The capabilities of SCESDs to function as both structural elements and energy storage units in a ???



An Energy Storage System (ESS) is a specific type of power system that integrates a power grid connection with a Victron Inverter/Charger, GX device and battery system. It stores solar energy in your battery during the day for use later on when the sun stops shining.



The integration of energy storage ability into mechanically strong carbon fibre reinforced polymer composite is promising in reducing the weight and volume while providing additional functions, ultimately leading to energy-efficient systems. high electrical conductivity and excellent mechanical properties of carbon fibres can be exploited



Hydrogen can be stored physically as either a gas or a liquid. Storage of hydrogen as a gas typically requires high-pressure tanks (350???700 bar [5,000???10,000 psi] tank pressure). Storage of hydrogen as a liquid requires cryogenic temperatures because the boiling point of hydrogen at one atmosphere pressure is ???252.8°C.

# WHAT IS A COMPOSITE ENERGY STORAGE SYSTEM



At the same time, a composite energy storage comprehensive comparison model is established, and four cases with different energy storage equipment are designed to compare and evaluate the model



composite energy storage system by using an electrical wave energy emulator. 2. Proposed System Linear wave energy converters can be considered a variable frequency generator, and the output is conventionally conditioned by controlled rectification. Therefore, a stable DC link voltage could be.



Flywheel energy storage systems (FESS) use electric energy input which is stored in the form of kinetic energy. Kinetic energy can be described as "energy of motion," in this case the motion of a spinning mass, called a rotor. The rotor spins in a nearly frictionless enclosure.



Carbon fiber with thermal conductivity of  $220 \text{ W/(m}\cdot\text{K)}$  was added to the paraffin phase change energy storage system to blend with paraffin, and the high thermal conductivity of carbon fiber was used to improve the thermal conductivity of the energy storage system by J.Fukai [13]. The results show that when the mass fraction of carbon fiber is



Composite material: glass & carbon fibers: Electrical machine: Induction motor, permanent magnet synchronous motor, switch reluctance motor: The low level component control includes power electronic converters and hybrid energy storage system. The high supervisory algorithms provide an overall control of the low level components control



# WHAT IS A COMPOSITE ENERGY STORAGE SYSTEM



The ability to store energy can reduce the environmental impacts of energy production and consumption (such as the release of greenhouse gas emissions) and facilitate the expansion of clean, renewable energy.. For example, electricity storage is critical for the operation of electric vehicles, while thermal energy storage can help organizations reduce their carbon ???



Composite Energy Storage System (CESS) is a combination of various energy storage technologies that offers not only above performance but also high efficiency and long life. For system management of CESS, problems of energy management and ???



Based on one year of measured data, four cases are designed for a composite energy storage system (ESS). In this paper, a two-tiered optimization model is proposed and is used to optimizing the capacity of power storage devices and the yearly production of the system. Furthermore, this paper performs a comparative analysis of the performance of



This paper proposes a Composite Energy Storage System (CESS) which contains both high energy density and high power density storages to meet the above mentioned requirements. The proposed power converter configuration and the energy management scheme can actively share the power flow among the different energy storages. Results are presented ???



Potential applications are presented for energy storage composites containing integrated lithium-ion batteries including automotive, aircraft, spacecraft, marine and sports ???