

# WHAT IS A SUPER ENERGY STORAGE POWER PLANT



Can a power plant be converted to energy storage? The report advocates for federal requirements for demonstration projects that share information with other U.S. entities. The report says many existing power plants that are being shut down can be converted to useful energy storage facilities by replacing their fossil fuel boilers with thermal storage and new steam generators.



How is energy stored in a power plant? The stored energy is proportional to the volume of water and the height from which it falls. Pumped-storage power plants were first developed in the 1970s to improve the way major thermal and nuclear power plants dealt with widely fluctuating demand for electricity at different times of the day.



What is a pumped-storage power plant? Pumped-storage power plants were first developed in the 1970s to improve the way major thermal and nuclear power plants dealt with widely fluctuating demand for electricity at different times of the day. Energy sources that are naturally replenished so quickly ??? sometimes immediately ??? that they such as wind and solar power.



How do pumped storage power plants work? Pumped-storage power plants store electricity using water from dams. The new model for using the plants in combination with renewable energy has led to a revival of the technology. In 2000, there were around 30 pumped storage power plants with a capacity of more than 1,000 megawatts worldwide.



What is the future of energy storage? Storage enables electricity systems to remain in balance despite variations in wind and solar availability, allowing for cost-effective deep decarbonization while maintaining reliability. The Future of Energy Storage report is an essential analysis of this key component in decarbonizing our energy infrastructure and combating climate change.

# WHAT IS A SUPER ENERGY STORAGE POWER PLANT



What is co-located energy storage? Co-located energy storage has the potential to provide direct benefits arising from integrating that technology with one or more aspects of fossil thermal power systems to improve plant economics, reduce cycling, and minimize overall system costs. Limits stored media requirements.



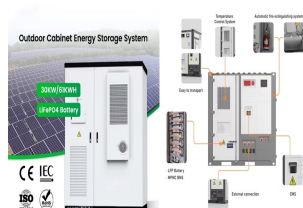
What is a Virtual Power Plant? A Virtual power plant (VPP) is a web of decentralised energy sources that are grouped together to provide a reliable power supply for energy users. These energy sources can come in 3 primary forms: Medium-scale power generation units. These are medium-sized sources of power, such as wind farms and solar parks



With the addition of this project, Super Energy's power generation capacity supplied to the commercial power system hit 359MW. greatly reducing the levelized cost of storage (LCOS) and improving plant stability and efficiency.



In the thermal power plant, the electrical energy is transformed from heat energy. Heat energy can be derived from different heat sources like; coal, diesel, biofuel, solar energy, nuclear energy, etc. The power plant that uses coal to generate heat is known as the thermal power plant. The thermal power plant is a conventional power plant.



Supercapacitors, even speedier than flywheels, store energy by separating charges. They're "super" because they store more energy than traditional capacitors, but they work the same way. Let's start with storage ???

# WHAT IS A SUPER ENERGY STORAGE POWER PLANT



The 3.6GW Fengning pumped storage power station under construction in the Hebei Province of China will be the world's biggest pumped-storage hydroelectric power plant. The massive pumped storage facility is being developed in two phases of 1.8GW capacity each by State Grid Xinyuan Company, a directly managed subsidiary of state-owned State



Thermal Energy Storage in Solar Power Plants: A Review of the Materials, Associated Limitations, and Proposed Solutions It should have minimal or no super cooling of PCM and congruent melting. (6)



-megawatt lithium-ion battery bank is big even for California, which boasts about 55% of the nation's power storage capacity, according to data from the U.S. Energy Information Administration.

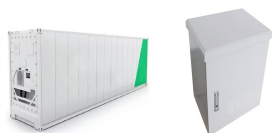


Because nuclear power plants are not designed to ramp up or down, their generation is constant at all times of the day. When demand for electricity is low at night, pumped hydro facilities store excess electricity for later use during peak demand. Energy storage is also valued for its rapid response???battery storage can begin discharging



Thermal energy storage (TES) is a technology that stocks thermal energy by heating or cooling a storage medium so that the stored energy can be used at a later time for heating and cooling applications and power generation. TES systems are used particularly in buildings and in industrial processes. This paper is focused on TES technologies that provide a way of ???

# WHAT IS A SUPER ENERGY STORAGE POWER PLANT



Schematic illustration of a supercapacitor [1] A diagram that shows a hierarchical classification of supercapacitors and capacitors of related types. A supercapacitor (SC), also called an ultracapacitor, is a high-capacity capacitor, with a capacitance value much higher than solid-state capacitors but with lower voltage limits. It bridges the gap between electrolytic capacitors and



MITEI's three-year Future of Energy Storage study explored the role that energy storage can play in fighting climate change and in the global adoption of clean energy grids. Replacing fossil ???



Energy storage is defined as the capture of intermittently produced energy for future use. In this way it can be made available for use 24 hours a day, and not just, for example, when the Sun is shining, and the wind is blowing can also protect users from potential interruptions that could threaten the energy supply.. As we explain later on, there are numerous types of energy ???



Three Gorges Dam in China, currently the largest hydroelectric power station, and the largest power-producing body ever built, at 22,500 MW. This article lists the largest power stations in the world, the ten overall and the five of each type, in terms of installed electrical capacity. Non-renewable power stations are those that run on coal, fuel oils, nuclear fuel, natural gas, oil ???



From above, the McIntosh plant looks like a standard natural gas power plant, but directly half a mile below the surface lies a unique energy storage mechanism. Courtesy Power South Energy Cooperative

# WHAT IS A SUPER ENERGY STORAGE POWER PLANT



This chapter presents the recent research on various strategies for power plant flexible operations to meet the requirements of load balance. The aim of this study is to investigate whether it is feasible to integrate the thermal energy storage (TES) with the thermal power plant steam-water cycle. Optional thermal charge and discharge locations in the cycle ???



8.1 Boiler make-up water treatment plant and storage. 8.2 Fuel preparation system. 8.3 Barring gear. 8.4 also known as a thermal power plant, is a type of power station in which the heat energy generated from various The direct cost of electric energy produced by a thermal power station is the result of cost of fuel, capital cost for



The rapid scaling up of energy storage systems will be critical to address the hour???to???hour variability of wind and solar PV electricity generation on the grid, especially as their share of generation increases rapidly in the Net Zero Scenario. power plant retrofits, smart grid measures and other technologies that raise overall



The main reasons for the low speed of the energy transition are the relatively low cost of fossil fuels in comparison with carbon-free fuels and the long investment cycle of power equipment (for instance, the investment cycle of the steam and gas turbine power plant is more than 20 years) [5], [6].Accordingly, the power equipment for using fossil fuels will operate in ???



Pumped storage hydroelectric power plants are one of the most applicable energy storage technologies on large-scale capacity generation due to many technical considerations such as their maturity, frequency control and higher ramp rates, thus maintaining following loads in case of high penetration of renewables in the electrical grid. Economic ???

# WHAT IS A SUPER ENERGY STORAGE POWER PLANT



Energy is essential in our daily lives to increase human development, which leads to economic growth and productivity. In recent national development plans and policies, numerous nations have prioritized sustainable energy storage. To promote sustainable energy use, energy storage systems are being deployed to store excess energy generated from ???



For energy storage in CSP plants, mixtures of alkali nitrate salts are the preferred candidate fluids. These nitrate salts are widely available on the fertilizer market. In conventional power plants, molten salt storage could be installed to a different extent in the future. Small sized molten salt systems could increase the flexibility of



As the IPP, Super Energy prioritizes the plant's efficient, safe and stable operation in the long run. Sungrow accordingly provides the industry-leading PV plus ESS solution for the plant. quicken the establishment of an intelligent power grid and possibly guide the future power generation and storage of new energy in the whole Southeast



For conventional power plants, the integration of thermal energy storage opens up a promising opportunity to meet future technical requirements in terms of flexibility while at the same time



Continental Europe's largest energy storage facility recently launched in Belgium's Deux-Acren village, bringing 100 megawatt-hours (MWh) of lithium-ion battery storage capacity and up to 50 MW of power. The new plant, situated in Belgium's Wallonia region, reportedly replaces a turbojet generator that previously provided energy to the area since the ???

# WHAT IS A SUPER ENERGY STORAGE POWER PLANT



Pumped-storage hydroelectricity (PSH), or pumped hydroelectric energy storage (PHES), is a type of hydroelectric energy storage used by electric power systems for load balancing. A PSH system stores energy in the form of gravitational potential energy of water, pumped from a lower elevation reservoir to a higher elevation. Low-cost surplus off-peak electric power is typically ???



Superconducting magnetic energy storage (SMES) systems store energy in the magnetic field created by the flow of direct current in a superconducting coil that has been cryogenically cooled to a temperature below its superconducting critical temperature. This use of superconducting coils to store magnetic energy was invented by M. Ferrier in 1970. [2] A typical SMES system ???