

WHAT IS A THERMAL ENERGY STORAGE STATION



What are the different types of thermal energy storage systems? Thermal energy storage (TES) systems can store heat or cold to be used later, at different conditions such as temperature, place, or power. TES systems are divided in three types: sensible heat, latent heat, and sorption and chemical energy storage (also known as thermochemical).



What is thermal energy storage? Thermal energy storage (TES) is the storage of thermal energy for later reuse. Employing widely different technologies, it allows surplus thermal energy to be stored for hours, days, or months. Scale both of storage and use vary from small to large ??? from individual processes to district, town, or region.



What are thermal energy storage materials for chemical heat storage? Thermal energy storage materials for chemical heat storage Chemical heat storage systems use reversible reactions which involve absorption and release of heat for the purpose of thermal energy storage. They have a middle range operating temperature between 200 °C and 400 °C.



How long does a thermal energy storage system last? Seasonal thermal energy storage also helps in increasing the productivity of green houses by extending the plant growing season to even during the winter .

Seasonal TES systems, once constructed, can last for 20???30 years.

3.2.1.



What are some sources of thermal energy for storage? Other sources of thermal energy for storage include heat or cold produced with heat pumps from off-peak, lower cost electric power, a practice called peak shaving; heat from combined heat and power (CHP) power plants; heat produced by renewable electrical energy that exceeds grid demand and waste heat from industrial processes.

WHAT IS A THERMAL ENERGY STORAGE STATION



What is a thermal storage system? Thermal storage systems typically consist of a storage medium and equipment for heat injection and extraction to/from the medium. The storage medium can be a naturally occurring structure or region (e.g., ground) or it can be artificially made using a container that prevents heat loss or gain from the surroundings (water tanks).



Thermal energy storage could boost wind and solar generation, electrify industries Audience Relations, CBC P.O. Box 500 Station A Toronto, ON Canada, M5W 1E6. Toll-free (Canada only): 1-866



Thermal Energy Storage (TES) for chilled water systems can be found in commercial buildings, industrial facilities and in central energy plants that typically serve multiple buildings such as college campuses or medical centers (Fig 1 below). TES for chilled water systems reduces chilled water plant power consumption during peak hours when energy costs ???



MW Andasol solar power station is a commercial parabolic trough solar thermal power plant, located in Spain. The Andasol plant uses tanks of molten salt to store captured solar energy so that it can continue generating electricity when the sun isn't shining. [1] This is a list of energy storage power plants worldwide, other than pumped hydro storage.



While conventional thermal power stations only generate around 30-40% of the energy they could, there are some types of thermal power station, which generate around 50%. The efficiency of a gas turbine can be improved with the addition of a steam turbine, increasing the electrical output from the same amount of fuel.

WHAT IS A THERMAL ENERGY STORAGE STATION



The thermal energy storage system is charged during off-peak hours and then discharged during peak hours to supplement the chillers' chilled water production. Thermal Energy Storage and Chiller Plant Efficiency. The incorporation of thermal energy storage allows the district cooling plant to have a smaller installed chiller capacity.



In December 2022, the Australian Renewable Energy Agency (ARENA) announced funding support for a total of 2 GW/4.2 GWh of grid-scale storage capacity, equipped with grid-forming inverters to provide essential system services that are currently supplied by thermal power plants.



Therefore, the coal is transported via trains to the fuel storage space. The size of coal is very large that is not suitable for the boiler. So, the coal is crushed in small pieces via crusher and fed to the boiler. In a thermal power plant, the heat energy is lost in the condenser. There are two types of efficiency in thermal power plants.

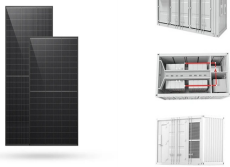


Thermal energy storage provides a workable solution to this challenge. In a concentrating solar power (CSP) system, the sun's rays are reflected onto a receiver, which creates heat that is used to generate electricity that can be used immediately or stored for later use.



Pumped Storage Hydro (PSH) o Thermal Energy Storage Super Critical CO₂ Energy Storage (SC-CCES) Molten Salt Liquid Air Storage o Chemical Energy Storage Hydrogen Ammonia Methanol 2) Each technology was evaluated, focusing on the following aspects: o Key components and operating characteristics o Key benefits and limitations of the technology

WHAT IS A THERMAL ENERGY STORAGE STATION



Thermal energy storage can be accomplished by changing the temperature or phase of a medium to store energy. This allows the generation of energy at a time different from its use to optimize the varying cost of energy based on the time of use rates, demand charges and real-time pricing.



Molten salt's physical and thermal properties make it a particularly good candidate for energy storage. It can be pumped just like water and stored in tanks just like water, says Cliff Ho, an



Thermal energy storage (TES) is gaining interest and traction as a crucial enabler of reliable, secure, and flexible energy systems. The array of in-front-of-the-meter TES technologies under



For CHP operation, the storage plant could be located close to the end-use as an "on-site storage plant". The remaining PtG unit could be installed at another location close to the supply of volatile electricity for example close to an offshore wind site. The major advantages of molten salt thermal energy storage include the medium



How does Thermal Storage Energy Work? At nighttime during off-peak hours, the water containing 25% ethylene glycol is cooled by a chiller. The solution gets circulated in the heat exchanger within the ice bank, freezing 95% of the water that surrounds the heat exchanger in the ice bank, freezing 95% of the water that is present around the heat exchanger in the tank.

WHAT IS A THERMAL ENERGY STORAGE STATION



Thermal energy storage (TES) is a technology that reserves thermal energy by heating or cooling a storage medium and then uses the stored energy later for electricity generation using a heat engine cycle (Sarbu and Sebarchievici, 2018) can shift the electrical loads, which indicates its ability to operate in demand-side management (Fernandes et al., 2012).



In 2022, the United States had two concentrating solar thermal-electric power plants, with thermal energy storage components with a combined thermal storage-power capacity of 450 MW. The largest is the Solana Generating Station in Arizona, which has 280 MW of storage power capacity.



Thermal Energy Storage Applications. Thermal energy is a good source of energy. Let's look at some of the good uses of thermal energy. We use thermal energy in solar power plants to provide energy during the night time. Thermal energy is used in cooking, baking, water heating, and heating. It is also used in thermal processing of non-metals.



Even though each thermal energy source has its specific context, TES is a critical function that enables energy conservation across all main thermal energy sources [5] Europe, it has been predicted that over 1.4×10^{15} Wh/year can be stored, and 4×10^{11} kg of CO₂ releases are prevented in buildings and manufacturing areas by extensive usage of heat and ???



Thermal energy storage can also be used to heat and cool buildings instead of generating electricity. For example, thermal storage can be used to make ice overnight to cool a building during the day. Thermal efficiency can range from 50 percent to 90 percent depending on the type of thermal energy used. Lithium-ion Batteries

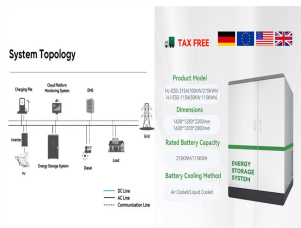
WHAT IS A THERMAL ENERGY STORAGE STATION



What is energy storage? Energy storage secures and stabilises energy supply, and services and cross-links the electricity, gas, industrial and transport sectors. It works on and off the grid, in passenger and freight transportation, and in homes as "behind the meter" batteries and thermal stores or heat pump systems.



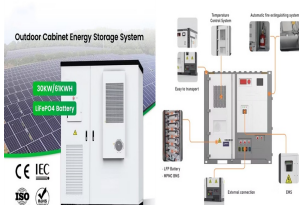
A thermal power station, also known as a thermal power plant, is a type of power station in which the heat energy generated from various fuel sources (e.g., coal, natural gas, nuclear fuel, etc.) is converted to electrical energy. [1]



Short-term storage that lasts just a few minutes will ensure a solar plant operates smoothly during output fluctuations due to passing clouds, while longer-term storage can help provide supply over days or weeks when solar energy production is low or during a major weather event, for example. Thermal energy storage is a family of



Thermal energy storage (TES) is a technology that stocks thermal energy by heating or cooling a storage medium so that the stored energy can be used at a later time for heating and cooling applications and power generation. TES systems are used particularly in buildings and in industrial processes. This paper is focused on TES technologies that provide a way of ???



Thermal Storage. Concentrated solar power (CSP) is a system that collects solar energy using mirrors or lenses and uses the concentrated sunlight to heat a fluid to run a turbine and generate electricity. Each plant an operating capacity of 20 MW and is primarily used for frequency regulation to balance changes in power supply and demand

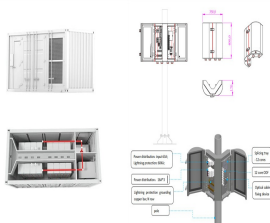
WHAT IS A THERMAL ENERGY STORAGE STATION



Thermal energy storage stations are facilities that store excess thermal energy for later use, enabling a balance between energy supply and demand. 1. They function by absorbing surplus thermal energy during peak production periods, 2. releasing it during high demand, 3. enhancing energy efficiency by optimizing resource utilization, and 4



The International Renewable Energy Agency predicts that with current national policies, targets and energy plans, global renewable energy shares are expected to reach 36% and 3400 GWh of stationary energy storage by 2050. However, IRENA Energy Transformation Scenario forecasts that these targets should be at 61% and 9000 GWh to achieve net zero ???



The answer is Thermal Energy Storage???which acts like a battery in a heating and cooling chiller plant to help improve energy, cost and carbon efficiency. Besides offering a great ROI, adding thermal energy storage is highly affordable thanks to recent tax incentives.



The 10-hour hot storage tank at the 110 MW Crescent Dunes CSP power tower plant in Nevada, the first full size Tower CSP plant to include storage. Typical commercial 100 MW CSP plants hold the hot molten salt at 600°C in a tank about this size to send the heat to boil water for steam to run the turbine in the thermal power block.



Photo courtesy of CB&I Storage Tank Solutions LLC. Thermal Energy Storage Overview. Thermal energy storage (TES) technologies heat or cool a storage medium and, when needed, deliver the stored thermal energy to meet heating or cooling needs. TES systems are used in commercial buildings, industrial processes, and district energy installations to

WHAT IS A THERMAL ENERGY STORAGE STATION



Thermal energy storage could connect cheap but intermittent renewable electricity with heat-hungry industrial processes. Rondo has been running its first commercial pilot at an ethanol plant



Types of Thermal Energy Storage Sensible (single-phase) storage Use temperature difference to store heat Molten salts (nitrates, carbonates, Molten-salt storage tanks at Solana CSP plant in Arizona. Credit: Abengoa . Sandia Research in Thermal Energy Storage . 16 ???