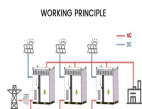
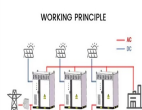
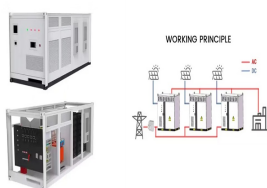


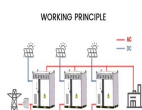
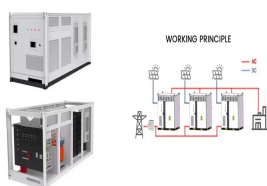
WHAT IS ENERGY STORAGE BATTERY AH



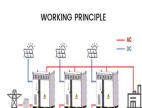
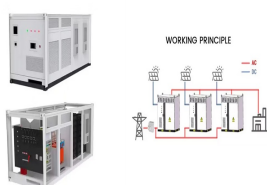
What is an Ah battery? Amp-hours, or Ah for short, are a unit of measure for a battery's energy capacity. This rating tells us how much current a battery can provide at a specific rate for a certain period. So, for example, if you have a fully-charged 5-Ah battery, it can provide five amps of current for one hour.



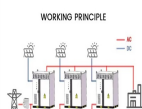
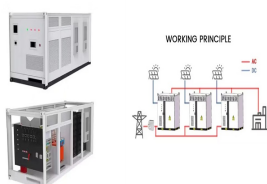
What is a battery ampere-hour (Ah)? Ampere-hours (Ah) is a unit of electric charge that measures the battery's capacity. It represents the amount of electric charge a battery can deliver at a specific current over a certain period. Essentially, one ampere-hour indicates that a battery can provide one ampere of current for one hour before it is depleted.



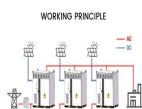
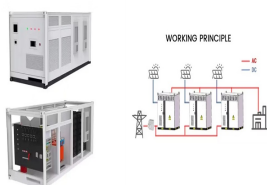
What is a battery Ah rating? An amp-hour (Ah) rating is a way to measure the capacity of a battery. It represents the amount of current a battery can deliver over a specific period of time. The higher the Ah rating, the longer the battery will last before needing to be recharged. Battery recycling is an important practice to ensure the proper disposal and reuse of batteries.



What is a 10 Ah battery? An Amp-Hour (Ah) is a unit of electrical charge, and it measures the battery capacity based on the number of hours it can supply a specific current. For example, a 10Ah battery can deliver 1 amp of current for 10 hours, 2 amps for 5 hours, or 5 amps for 2 hours.



What is a battery capacity? Battery capacity is commonly measured in amp-hours (Ah) and refers to the amount of energy a battery can deliver over a certain period of time. This capacity rating indicates the total charge a battery can store and provide to a device or system. What is an Amp-Hour?

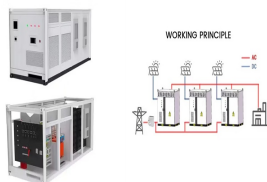


How long does a 2 Ah battery last? For instance, if you have a device that draws 0.5 amps of current, a 2 AH battery will last approximately 4 hours ($2 \text{ AH} / 0.5 \text{ amps} = 4 \text{ hours}$). Additionally, AH can also indicate the overall energy storage capacity of a battery. Batteries with higher AH ratings

WHAT IS ENERGY STORAGE BATTERY AH

generally have more energy stored and can power devices for a longer period of time.

WHAT IS ENERGY STORAGE BATTERY AH



The most common measurement of battery storage capacity is the Amp-Hour or Ah. The size of solar batteries can range from less than 100 Ah, to more than 1,000 amp-hours in single battery. What is an Amp-Hour? An Amp-Hour or ampere-hour (Ah) describes battery capacity - how long will it run before it is drained.



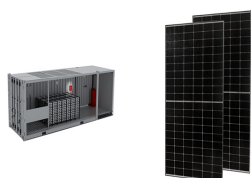
Amp-hours, often denoted as Ah, act as a measure of a battery's energy storage capacity. This specification reveals the quantity of electrical charge a battery can deliver consistently at a specific rate for a set period. Can I replace a 4.5 Ah battery with a 5Ah battery? In many cases, yes, you can replace a 4.5Ah battery with a 5Ah



The storage capacity of the DELL Laptop, for example, could be expressed as 6.254 Ah. The value is exactly the same as 6,254mAh. Convert mAh to Ah Formula . Divide the electric charge value by 1000: (6,254 mAh / 1000 = 6.254 Ah) As mentioned above, more power-hungry battery-operated devices typically spec out storage capacity in Wh/kWh a?? not



These batteries are often found in applications such as renewable energy systems and electric vehicles. It's important to note that while Ah indicates the capacity or energy storage capability of a battery, it doesn't directly determine its ability to start an engine or provide bursts of power like CCA does. That's where CCA comes into play.



From backup power to bill savings, home energy storage can deliver various benefits for homeowners with and without solar systems. And while new battery brands and models are hitting the market at a furious pace, the best solar batteries are the ones that empower you to achieve your specific energy goals. In this article, we'll identify the best solar batteries in a?|

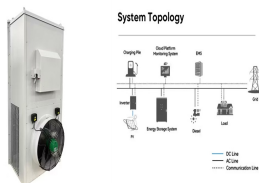
WHAT IS ENERGY STORAGE BATTERY AH



What Does Ah Mean on Battery? Ampere-hour (Ah) is the unit of electrical charge commonly used to describe the energy storage capacity of a battery. One ampere-hour is equivalent to the amount of charge transferred by a current of one ampere over the course of one hour. The Ah capacity of a battery indicates how long it can sustain a current of a certain a?|



Battery Ah refers to ampere-hour, which is a unit of electrical charge. But what does that actually mean for your devices? Simply put, the battery Ah rating tells you how much charge a battery can hold and deliver over time. It is a way to measure the capacity or energy storage capability of a battery.



The energy storage capacity of a battery refers to the amount of energy that the battery can store and supply when needed. This capacity is typically measured in ampere-hours (Ah), which is a unit used to quantify the charge capacity of a battery.



Tehachapi Energy Storage Project, Tehachapi, California. A battery energy storage system (BESS) or battery storage power station is a type of energy storage technology that uses a group of batteries to store electrical energy. Battery storage is the fastest responding dispatchable source of power on electric grids, and it is used to stabilise those grids, as battery storage can a?|



The article clarifies that while Ah measures the total charge a battery can hold, Wh represents the total energy the battery can provide over time, considering both current and voltage. It further discusses how these units are essential for making informed decisions about energy use, storage, and management.

WHAT IS ENERGY STORAGE BATTERY AH



Adding battery storage to your solar installation is a great way to take full advantage of the benefits of renewable energy to increase your quality of life. However, when it comes to navigating the world of amps, volts, and amp hours, it can definitely be confusing.



A battery energy storage system (BESS) captures energy from renewable and non-renewable sources and stores it in rechargeable batteries (storage devices) for later use. A battery is a Direct Current (DC) device and when needed, the electrochemical energy is discharged from the battery to meet electrical demand to reduce any imbalance between



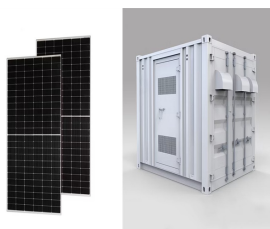
The higher the Ah rating, the more energy the battery can store, and the longer it can power your device. For example, if you have a 100Ah battery, it can provide 100 amps of current for one hour, or 50 amps for two hours, or 25 amps for four hours, and so on. The actual time a battery will last depends on the amount of current being drawn from



An amp hour (Ah) is a measure of charge and provides an estimate of how much energy a battery can hold. It is the amount of energy charge in a battery that will allow one ampere of current to flow for one hour. A watt hour (Wh), on the other hand, is a measure of power and indicates the equivalent to one Watt of average power flow over an hour.



For large batteries, the rating is abbreviated as Ah. Most deep cycle batteries will tell you the Ah rating at multiple C ratings. The C rating tells you how many amp hours the battery can provide for a very specific period of time. For instance, at C/5 a battery might safely provide 26.8 amp hours.



battery energy capacity, also called battery energy, measured in joules [J], watts-hour [Wh] or kilowatts-hour [kWh] In this article we are going to discuss about battery energy capacity. Go back. Formula. If the battery consists of a single cell, the battery energy formula (equation) is:

WHAT IS ENERGY STORAGE BATTERY AH



When we refer to a battery's ampere-hours (Ah), we are essentially referring to its capacity or energy storage capability. The higher the Ah rating of a battery, the more charge it can store and deliver. It is important to note that the overall capacity of a battery may differ based on the discharge rate and temperature conditions



The amp-hour (Ah) rating is a measure of the energy storage capacity of a battery. It tells you how many amperes of current the battery can deliver for a specified number of hours. For example, a battery with an amp-hour rating of 50 Ah can deliver 50 amperes of current for one hour, or 5 amperes for 10 hours.



Battery capacity is a fundamental concept in the world of portable electronics and energy storage. It's a measure that determines how much energy a battery can hold and, consequently, how long it can power your devices. Whether you're using a smartphone, laptop, or electric vehicle, understanding battery capacity is crucial for making informed decisions about a?



A 6.0 Ah battery has 50% more capacity than a 4.0 Ah battery, meaning it can provide longer use time under the same discharge conditions. This allows devices to operate for an extended period without requiring a recharge or battery replacement. Understanding DoD is essential for optimizing battery usage and managing energy storage systems



Sample of a Battery. In our previous post, we focused on the definition of a battery's Voltage and how it affects the battery's performance. Now we look deeper into another factor which greatly affects our batteries, the Ampere Hour or Amp Hour rating.. An Amp Hour (Ah) is the amount of current a certain battery can supply for a certain period of time. . The Amp Hour also has sub a?|

WHAT IS ENERGY STORAGE BATTERY AH



Why Ah is Important for Battery Performance. The Ah rating is a vital metric as it directly influences the battery's runtime and overall performance. For applications like golf carts, solar energy storage, or marine use, understanding the Ah rating helps in selecting a battery that can meet the specific energy demands of the system. 1.



A: A 5.0 Ah battery offers significantly more runtime than a 3.0 Ah battery, providing up to 66% more runtime. It is better suited for demanding applications that require extended usage without frequent recharging. Q3: How do Ah ratings of lithium batteries indicate long-term energy storage capacity? A: Ah ratings indicate the capacity of a



In simple terms, the AH rating gives an estimate of the total energy storage capacity of a battery. The amp hour capacity has a major impact on the runtime you can expect from a battery before it needs recharging. The higher the AH rating, the longer a battery will last on a single charge. The higher the AH, the more energy a battery can



It denotes the capacity of the battery or the amount of energy it can deliver over a specific period of time. The higher the Ah rating, the longer a battery can last before needing to be recharged. So, a 5.0 Ah battery has a larger capacity and can provide more power compared to a lower Ah rating battery.



The Ah rating of a battery reflects its energy storage capacity. Generally, a higher Ah rating indicates that the battery can provide power for a longer duration. For example, a battery with a 5 Ah rating can supply a current of 1 Ampere for 5 a?|



Battery Capacity is the measure of the total energy stored in the battery and it helps us to analyze the performance and efficiency of the batteries. As we know, a battery is defined as an arrangement of electrochemical cells that works as a power source when there is no power source

WHAT IS ENERGY STORAGE BATTERY AH

available and is used widely in today's world. From small electronic gadgets a?

WHAT IS ENERGY STORAGE BATTERY AH



In simple terms, battery capacity refers to the amount of energy that a battery can store. The capacity of a battery is typically measured in ampere-hours (Ah) or milliamperes-hours (mAh) for smaller batteries. Ampere-hour (Ah) is a unit of measurement used to describe the amount of electrical charge that a battery can provide over a period of time.