

# WHAT IS THE APPROPRIATE CAPACITY OF EACH PHOTOVOLTAIC PANEL



How many solar panels do I Need? The number and size of your solar panels depend on the size of your property and energy demands. A 4kW solar system is one of the most popular sizes for domestic solar systems, as it is typically appropriate for homes with 3 to 4 people. So in this case, you would need something like 10 solar panels installed on your roof, each at a power of 400 W.



How to calculate required solar panel capacity? Step-3 Calculate required Solar Panel Capacity: Perform calculations using this formula- Required PV panel wattage (Watts) = Average Daily Energy Consumption (kWh) / Average Daily Sunlight Exposure (hours) Required solar panel output = 30 kWh / 5 hours = 6 kW.



How much energy does a solar PV system use? If your roof is optimal and you get a solar battery to store excess energy generated by your panels, then a 3.5kW - 4.8kW solar PV system with a battery can cover approx. 50-70% of the consumption of the average home in the UK. This size system, of course, can cover a lot more depending on how much electricity you use and at what times of the day.



What size solar panel do I Need? The most common solar panel sizes for residential installations are between 250W and 400W, while larger commercial installations may use panels up to 500W or more. The size of a solar panel affects its efficiency, with larger panels generally being more efficient but also more expensive and heavier.



How does the size of a solar panel affect its efficiency? The size of a solar panel affects its efficiency, with larger panels generally being more efficient but also more expensive and heavier. The size of a solar panel should be chosen based on factors such as available space, energy needs, and budget.

# WHAT IS THE APPROPRIATE CAPACITY OF EACH PHOTOVOLTAIC PANEL



How much power does a large solar panel provide? Risen Energy offers large solar panels at 3.1 metres that can provide 670W of power ??? for reference that is twice as much as standard-sized panels. Please note: large solar panels are not always necessary, they are certainly not always more efficient and may be more difficult to install. How heavy are solar panels?



PV solar panels tend to vary between 250w to 460w per panel, depending on the size of it and the cell technology used to create each of the modules. To calculate the number of panels you need, divide the hourly ???



In the solar world, panel efficiency has traditionally been the factor most manufacturers strived to lead. However, over the last 3 to 4 years, a new battle emerged to develop the world's most powerful solar panel, with many of the industry's biggest players announcing larger format next-generation panels with power ratings well above 600W.



How solar panels work. Each particle of sunlight contains energy that fuels our planet, but to power your home, it has to be captured and converted into what we call "usable electricity." (GW) of installed solar power capacity??? enough to provide clean energy to about 25 million homes. As of IREC's most recent Solar Job Census covering



Recent advancements in bifacial solar panel technology have contributed to their growing market share in the renewable energy sector. The global bifacial solar panel market has witnessed notable growth due to factors such as increased demand for clean energy, improved efficiency, cost reduction, and environmental benefits.

# WHAT IS THE APPROPRIATE CAPACITY OF EACH PHOTOVOLTAIC PANEL



Before selecting an appropriate inverter size, there are several key factors to consider, including the total system size (DC wattage of all solar panels), expected energy consumption (daily and peak usage in kW), future expansion ???

114KWh ESS



pictured is a small-scale PV demonstration featuring all of the components: a PV array and combiner box mounted on a racking system, a DC disconnect switch, a string inverter (red and white unit), an AC disconnect switch, and an AC service panel. Collectively, these are referred to as the Balance of System (BOS). Power & Energy



Photovoltaic Array The Solar Photovoltaic Array. If photovoltaic solar panels are made up of individual photovoltaic cells connected together, then the Solar Photovoltaic Array, also known simply as a Solar Array is a system made up of a group of solar panels connected together.. A photovoltaic array is therefore multiple solar panels electrically wired together to form a much ???



The SMA CORE1 62-US datasheet lists the rated maximum system voltage and MPP voltage range (highlighted). String Sizing Calculations How to calculate minimum string size:. The minimum string size is the minimum number of PV modules connected in series required to keep the inverter running during hot summer months.



How to Calculate Solar Panel KWp: The technical specifications label on the back of your solar pane will tell you its KWp. In simple terms, KWp refers to the maximum power output capability of a solar ???

# WHAT IS THE APPROPRIATE CAPACITY OF EACH PHOTOVOLTAIC PANEL



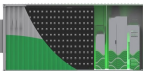
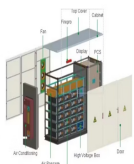
In simple terms, KWp refers to the maximum power output capability of a solar panel or solar system. Each solar panel is assigned a KWp rating by the manufacturer, representing the energy it can generate at its ???



The photovoltaic effect is a process that generates voltage or electric current in a photovoltaic cell when it is exposed to sunlight is this effect that makes solar panels useful, as it is how the cells within the panel convert sunlight to ???



The solar panel industry showcases a dynamic interplay between panel size and efficiency, a relationship that fundamentally shapes the performance and practicality of photovoltaic systems. in length for larger, high-capacity panels. The thickness of solar panels generally ranges between 1 to 1.5 inches (or 25 to 38 millimetres), although



Solar Panel Size. It focuses on maximum electricity generation and overall capacity rather than the quantity of panels. To calculate the required system size, multiply the number of panels by the output. For example, a 6.6 ???



MPPT stands for Maximum Power Point Tracker; these are far more advanced than PWM charge controllers and enable the solar panel to operate at its maximum power point, or more precisely, the optimum voltage and current for maximum power output. Using this clever technology, MPPT solar charge controllers can be up to 30% more efficient, depending on the ???

# WHAT IS THE APPROPRIATE CAPACITY OF EACH PHOTOVOLTAIC PANEL



- LIQUID COOLING
- ON BOARD BMS
- PROTECTION FEATURES
- BATTERY MANAGEMENT SYSTEM

The Solar Settlement, a sustainable housing community project in Freiburg, Germany Charging station in France that provides energy for electric cars using solar energy Solar panels on the International Space Station. Photovoltaics (PV) is the conversion of light into electricity using semiconducting materials that exhibit the photovoltaic effect, a phenomenon studied in ???



Battery String S224

- 1C Charge/Discharge
- Easy configuration and maintenance
- Three supply can be single battery string or parallel battery strings

To read more about the costs of solar panels, check our recent guide on solar panel costs. What is the payback period for a solar farm? It generally takes between five to 10 years to pay back the money you've borrowed on a solar farm through earnings from selling electricity back to the grid.



Power Conversion System

- Single stage three level modulation
- Multi branch type to reduce battery wire and parallel connection

The solar panel angle of your solar system is different depending on which part of the world you are. Solar panels give the highest energy output when they are directly facing the sun. The sun moves across the sky and will be low or high depending on the time of the day and the season. For that reason the ideal angle is never fixed.



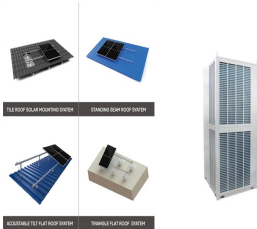
By accurately calculating your energy needs, desired backup time, and considering factors like system efficiency and future expansion, you can determine the appropriate sizes for your battery bank, inverter, and solar ???



- ✓ 1000W/144V
- ✓ PowerUp to 1000W
- ✓ IP 65
- ✓ EMS AND BMS

The most important characteristic of any solar panel is its power output and photovoltaic solar panels are available in a wide range of power outputs ranging from a few watts to more than 400 watts for the bigger panels and/or modules. Then when a panel is advertised as having a capacity of say, 400 Watts-peak, this is the power output it

# WHAT IS THE APPROPRIATE CAPACITY OF EACH PHOTOVOLTAIC PANEL



A photovoltaic array, commonly known as a solar panel system, is made up of several key components that work together to convert sunlight into usable electricity. Understanding the composition of a photovoltaic array is essential to grasp how solar energy is harnessed. The first component of a photovoltaic array is the solar panels themselves.



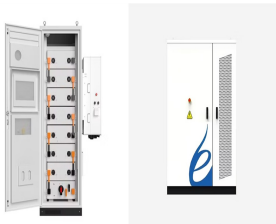
What Is Array Voltage? PV array voltage is the sum total voltage of your panels when connected in a series. Two 24V panels connected in series will make a PV array voltage of 48V. However, keep in mind that if ???



Summary. You need around 200-400 watts of solar panels to charge many common 12V lithium battery sizes from 100% depth of discharge in 5 peak sun hours with an MPPT charge controller.; You need around 150-300 watts of solar panels to charge many common 12V lead acid battery sizes from 50% depth of discharge in 5 peak sun hours with an ???



Each type of solar panel varies in how much power it can produce. If you have limited roof space, Monocrystalline panels typically have the highest efficiency and power capacity. They can reach efficiencies of over 22% and provide over 300 watts (W) of power capacity. Many even exceed 400 W. Polycrystalline solar panels, on the other hand



Since photovoltaics are adversely affected by shade, any shadow can significantly reduce the power output of a solar panel. The performance of a solar panel will vary, but in most cases, guaranteed power output life ???

# WHAT IS THE APPROPRIATE CAPACITY OF EACH PHOTOVOLTAIC PANEL



ASCE 7 Guidelines. The American Society of Civil Engineers (ASCE) provides guidelines for the structural design of solar panel installations through their publication, ASCE 7 1. These guidelines cover the essential factors that influence solar panel installations, such as wind loads, snow loads, and dead loads, to ensure the safe and efficient operation of these ???



Solar Panel Sizes UK Key Points: Solar panels come in different sizes, as it is typically appropriate for homes with 3 to 4 people. So in this case, you'd need something like 10 solar panels installed on your roof, each at a ???



For example, if you have a solar panel that has a Voc (at STC) of 40V, and a Temperature Coefficient of 0.27%/°C. Then for every degree celsius drop in panel cell temperature, the voltage will rise by:  $40V \times 0.27\% = 0.108V$ . Or if your ???



Solar panels. Each solar panel has solar "cells" containing silicon, which convert sunlight to direct current (DC) electricity through the photovoltaic effect. The most appropriate solar panel angle of latitude depends on whether you use ???



Selecting the right installation capacity for your home PV system is a crucial step toward maximising your solar energy benefits. By following the steps outlined above, you can accurately estimate the ideal capacity for your ???

# WHAT IS THE APPROPRIATE CAPACITY OF EACH PHOTOVOLTAIC PANEL



For instance, if your calculated system capacity is 5kW and each panel has a capacity of 500W, you would need 10 panels. Make sure to consider the specifics of the panels you choose, which can affect the overall ???



They also prevent battery drainage by shutting down the system if stored power falls below 50 percent capacity and charge the batteries at the correct voltage level. For example, a 12v solar panel might put out up to 19 volts. While a 12v battery can take up to 14 or 15 volts when charging, 19 volts is simply too much and could lead to



Solar Module Cell: The solar cell is a two-terminal device. One is positive (anode) and the other is negative (cathode). A solar cell arrangement is known as solar module or solar panel where solar panel arrangement is known as photovoltaic array. It is important to note that with the increase in series and parallel connection of modules the power of the modules also gets added.