

WHAT IS THE CAPACITY OF THE ENERGY STORAGE UNIT



Do energy storage facilities use more electricity than generate? Energy storage facilities generally use more electricity than they generate and have negative net generation. At the end of 2023, the United States had 1,189,492 MW or about 1.19 billion kW of total utility-scale electricity-generation capacity.



What is the power capacity of a battery energy storage system? As of the end of 2022, the total nameplate power capacity of operational utility-scale battery energy storage systems (BESSs) in the United States was 8,842 MW and the total energy capacity was 11,105 MWh. Most of the BESS power capacity that was operational in 2022 was installed after 2014, and about 4,807 MW was installed in 2022 alone.



How much energy is stored in the world? Worldwide electricity storage operating capacity totals 159,000 MW, or about 6,400 MW if pumped hydro storage is excluded. The DOE data is current as of February 2020 (Sandia 2020). Pumped hydro makes up 152 GW or 96% of worldwide energy storage capacity operating today.



What is an energy storage system? An energy storage system (ESS) for electricity generation uses electricity (or some other energy source, such as solar-thermal energy) to charge an energy storage system or device, which is discharged to supply (generate) electricity when needed at desired levels and quality. ESSs provide a variety of services to support electric power grids.



Why is energy storage important? For example, electricity storage is critical for the operation of electric vehicles, while thermal energy storage can help organizations reduce their carbon footprints. Large-scale energy storage systems also help utilities meet electricity demand during periods when renewable energy resources are not producing energy.

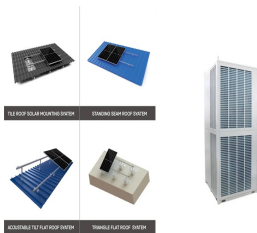
WHAT IS THE CAPACITY OF THE ENERGY STORAGE UNIT



What is a battery energy storage system? While consumers often think of batteries as small cylinders that power their devices, large-scale battery storage installations known as battery energy storage systems (BESS) can rival some pumped hydro storage facilities in power capacity.



??? Energy or Nominal Energy (Wh (for a specific C-rate)) ??? The "energy capacity" of the battery, the total Watt-hours available when the battery is discharged at a certain discharge current (specified as a C-rate) from 100 percent state-of-charge to the cut-off voltage. Energy is calculated by multiplying the discharge power (in Watts

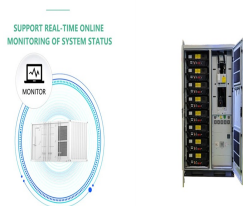


The Gambit Energy Storage Park is an 81-unit, 100 MW system that provides the grid with renewable energy storage and greater outage protection during severe weather. Homer Electric installed a 37-unit, 46 MW system to increase renewable energy capacity along Alaska's rural Kenai Peninsula, reducing reliance on gas turbines and helping to



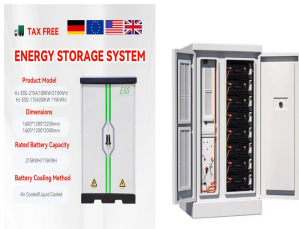
In the context of a Battery Energy Storage System (BESS), MW (megawatts) and MWh (megawatt-hours) are two crucial specifications that describe different aspects of the system's performance.

Understanding the difference between these two units is key to comprehending the capabilities and limitations of a BESS. 1.



In comparison to other forms of energy storage, pumped-storage hydropower can be cheaper, especially for very large capacity storage (which other technologies struggle to match). According to the Electric Power Research Institute, the installed cost for pumped-storage hydropower varies between \$1,700 and \$5,100/kW, compared to \$2,500/kW to

WHAT IS THE CAPACITY OF THE ENERGY STORAGE UNIT



Peaking Capacity: Energy storage meets short-term spikes in electric system demand that can otherwise require use of lower-efficiency, Battery energy storage systems vary in size from residential units of a few kilowatt-hours to utility-scale systems of hundreds of megawatt-hours, but they all share a similar architecture.



U.S. battery storage capacity has been growing since 2021 and could increase by 89% by the end of 2024 if developers bring all of the energy storage systems they have planned on line by their intended commercial operation dates. Developers currently plan to expand U.S. battery capacity to more than 30 gigawatts (GW) by the end of 2024, a capacity that would ???



Energy capacity. is the maximum amount of stored energy (in kilowatt-hours [kWh] or megawatt-hours [MWh]) ??? Storage duration. is the amount of time storage can discharge at its power capacity before depleting its energy capacity. For example, a battery with 1 MW of power capacity and 4 MWh of usable energy



Duration = Energy Storage Capacity / Power Rating. Suppose that your utility has installed a battery with a power rating of 10 MW and an energy capacity of 40 MWh. Using the above equation, we can conclude that the battery has a duration of 4 hours: 3101 Kintzley Court, Unit F Laporte, CO 80535 (866) 765-5432 info@enerdynamics



High-capacity energy storage facilities with relatively small footprints is the promise of TENER. CATL. 4 / 4. A TENER energy storage unit should be good for at least 15,000 cycles, and is

WHAT IS THE CAPACITY OF THE ENERGY STORAGE UNIT



Powerwall 3 and Powerwall+ are designed for owners installing a new solar and storage system. Solar systems are integrated directly into the Powerwall, for higher efficiency and more compact installation with solar inverters being included. Energy Capacity: Powerwall 2 13.5 kWh 1. Powerwall+ 13.5 kWh 1. Powerwall 3 13.5 kWh 1. On-Grid Power



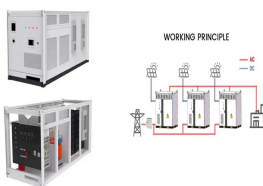
The battery energy capacity is the entire energy that may be taken from a fully charged cell or battery, measured in watt hours (kilowatt hours). A cell's energy reserve changes depending on factors like temperature, rate, age, and cut-off voltage. System designers use this phrase more frequently in the battery industry, where capacity is typically expressed in ampere ???



Energy density. Energy density is often used to compare different energy storage technologies. This parameter relates the storage capacity to the size or the mass of the system, essentially showing how much energy (Wh) can be stored per unit cell, unit mass (kg), or unit volume (liter) of the material or device.



Energy storage facilities generally use more electricity than they generate and have negative net generation. the United States had 1,189,492 MW???or about 1.19 billion kW???of total utility-scale electricity-generation capacity. Generating units fueled primarily with natural gas accounted for the largest share of U.S. utility-scale



Battery Energy Storage Systems (BESS) Definition. A BESS is a type of energy storage system that uses batteries to store and distribute energy in the form of electricity. These systems are commonly used in electricity grids and in other applications such as electric vehicles, solar power installations, and smart homes.

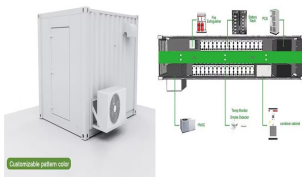
WHAT IS THE CAPACITY OF THE ENERGY STORAGE UNIT



Energy storage enables us to shift energy in time from when it is produced to its later use. This makes it a great long-term and high-capacity energy storage option. Compressed air can be stored for a long time in shallow, medium and deep storage, and even under water. It is likely to be cheaper than pumped hydro and battery



Energy (Watt-hours) = Capacity (amp-hours) x Voltage (volts) Let's look at an example using the equation above ??? if a battery has a capacity of 3 amp-hours and an average voltage of 3.7 volts, the total energy stored in that battery is 11.1 watt-hours ??? 3 amp-hours (capacity) x 3.7 volts (voltage) = 11.1 watt-hours (energy).



The energy storage system of most interest to solar PV producers is the battery energy storage system, or BESS. While only 2-3% of energy storage systems in the U.S. are BESS (most are still hydro pumps), there is an increasing move to ???



K. Webb ESE 471 5 Capacity Units of capacity: Watt-hours (Wh) (Ampere-hours, Ah, for batteries) State of charge (SoC) The amount of energy stored in a device as a percentage of its total energy capacity Fully discharged: SoC = 0% Fully charged: SoC = 100% Depth of discharge (DoD) The amount of energy that has been removed from a device as a



From the energy storage division perspective, gravity energy storage is most similar to pumped storage: they both store or release electrical energy by converting electrical energy and gravitational potential energy to each other through electromechanical devices. This paper proposes two typical unit capacity configuration strategies and

WHAT IS THE CAPACITY OF THE ENERGY STORAGE UNIT



ability to provide energy storage at a large scale. These containers can be stacked and combined to increase the overall storage capacity, making them well-suited for large-scale renewable energy projects such as solar and wind farms. Additionally, BESS containers can be used to store energy during off-peak hours, and then release it



The capacity factor is a crucial measure for electricity generation. It represents the ratio of actual electrical energy production to the maximum possible output over a specific period. Nuclear plants lead with a 90%+ factor, while renewable sources like wind and solar struggle due to intermittency. New challenges arise with climate change impacting demand ???



Nominal capacity refers to the advertised or specified capacity of a device or system, representing its maximum output or storage capability under normal operating conditions is a widely used term in various industries such as engineering, electronics, manufacturing, and energy. Gaining a clear understanding of the significance of this capacity ???



The Department of Energy's (DOE) Energy Storage Grand Challenge (ESGC) is a comprehensive program to accelerate the development, commercialization, and utilization of next-generation energy storage technologies and sustain American global leadership in energy storage. The two metrics determine the average price that a unit of energy



Energy (kilowatt-hours, kWh) Energy, on the other hand, is more a measure of the "volume" of electricity ??? power over time. You'll usually hear (and see) energy referred to in terms of kilowatt-hour (kWh) units. The place you'll see this most frequently is on your energy bill ??? most retailers charge their customers every quarter based (in part) on how many kWh of electricity they

WHAT IS THE CAPACITY OF THE ENERGY STORAGE UNIT



This paper proposes an analytical method to determine the aggregate MW-MWh capacity of clustered energy storage units controlled by an aggregator. Upon receiving the gross dispatch order, a capacity-aware water-filling policy is developed to allocate the dispatched power among individual energy storage units, which is called disaggregation.



Battery storage, or battery energy storage systems (BESS), are devices that enable energy from renewables, like solar and wind, to be stored and then released when the power is needed most.. Lithium-ion batteries, which are used in mobile phones and electric cars, are currently the dominant storage technology for large scale plants to help electricity grids
???