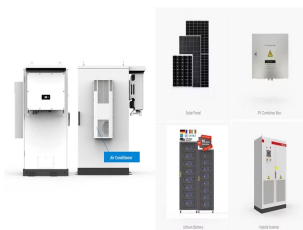
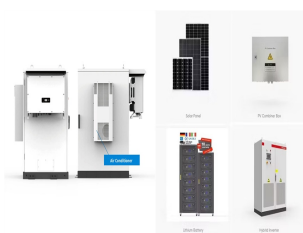


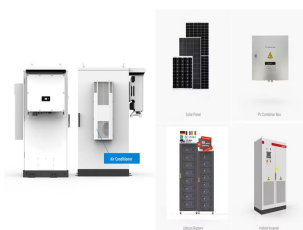
WHAT IS THE ENERGY SOURCE OF LARGE BASE STATION ENERGY STORAGE



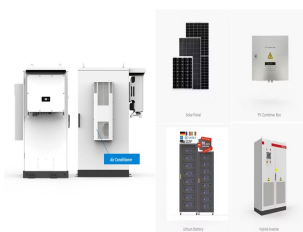
What is the energy storage system? The energy storage system includes 1x5 MWx2 h LiB, 1x2 MWx2 h VRFB. And the wind power of 99 MW had been put into operation in August 2012. The system is connected with the 35 kV bus. Through intelligent control, the system stores and releases power according to the coordinating with wind power.



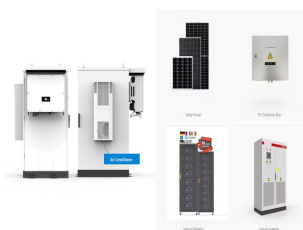
What is the largest grid-forming energy storage station in China? This marks the completion and operation of the largest grid-forming energy storage station in China. The photo shows the energy storage station supporting the Ningdong Composite Photovoltaic Base Project. This energy storage station is one of the first batch of projects supporting the 100 GW large-scale wind and photovoltaic bases nationwide.



Is energy storage a precondition for large-scale integration and consumption? So to speak, energy storage is the precondition of large-scale integration and consumption of RES. However, China's energy storage industry is at the exploration stage and far from commercialization. This restricts the development of RES to certain extent. For this reason, this paper will concentrate on China's energy storage industry.



What are the core technologies for energy storage? At this stage, core technologies should be broken through including the screening of high temperature heat storage materials and its device design, the design and manufacture of the core component of CAES, the new material manufacture of chemical energy storage, the energy storage systems integration and energy management.



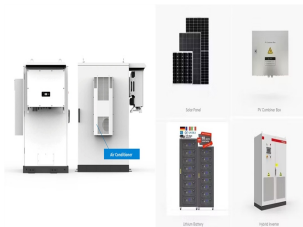
What is NASB energy storage project? In 2011, the first national NaSB power plant demonstration "NaSB Energy Storage Project" in "industry-university-research cooperation" mode was launched. It is designed as outdoor warehouse and the overall storage capacity is 1.2 MWh. In December 2014, the first warehouse was connected to the grid

WHAT IS THE ENERGY SOURCE OF LARGE BASE STATION ENERGY STORAGE

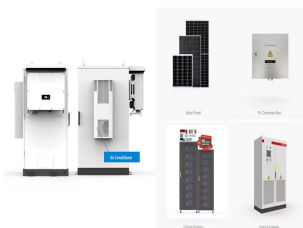


and entered into operation phase.

WHAT IS THE ENERGY SOURCE OF LARGE BASE STATION ENERGY STORAGE



What is the energy storage subsidy? The upper limit is 1 million yen for household and 0.1 billion yen for commercial consumers. The object of this subsidy is not only optimizing electricity system operation, but also evaluating the influence of large-scale production for battery costs. Compared with the US and Japan, EU started late in energy storage policies.



How to fully utilize the often dormant base station energy storage resources so that they can actively participate in the electricity market is an urgent research question. This paper ???



potential of 5G base station energy storage to participate in demand response, we must first analyze the load characteristics of 5G communication base stations and participate in demand ???



The Dalian Flow Battery Energy Storage Peak-shaving Power Station was approved by the Chinese National Energy Administration in April 2016. As the first national, large-scale chemical energy storage demonstration ???



In today's 5G era, the energy efficiency (EE) of cellular base stations is crucial for sustainable communication. Recognizing this, Mobile Network Operators are actively prioritizing EE for ???

WHAT IS THE ENERGY SOURCE OF LARGE BASE STATION ENERGY STORAGE



Porous rock storage facilities are mainly used for seasonal base load coverage, as they usually have a large storage volume, but the gas has to be injected and withdrawn more slowly due to the naturally given flow conditions ???



Nuclear energy is ideal for the initial missions, as it provides a reliable, powerful, long-lasting source of energy. Furthermore, the waste heat from the reactor can be used to drive ISRU reactions. One example is the ???



Prosumer energy storage units are compact energy storage devices crafted to store energy generated by home photovoltaic installations. Typically, their capacity spans from several to several dozen kilowatt-hours. In ???



Firstly, the technical advantages of gNBs are apparent in both individual and group control. From an individual control perspective, each gNB is equipped with advanced energy ???



Nuclear power stations are highly controversial, are not able to be built under existing law in any Australian state and territory, are a more expensive source of power than renewables, and present significant challenges in terms of the ???

WHAT IS THE ENERGY SOURCE OF LARGE BASE STATION ENERGY STORAGE



On the basis of ensuring smooth user communication and normal operation of base stations, it realizes orderly regulation of energy storage for large-scale base stations, participates in ???



In this paper, a comprehensive strategy is proposed to safely incorporate gNBs and their BESSs (called "gNB systems") into the secondary frequency control procedure. Initially, ???