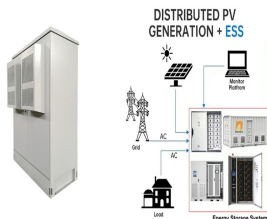
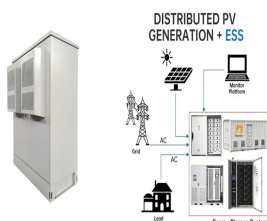


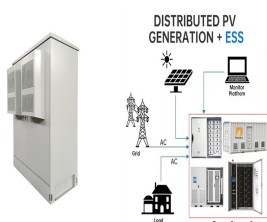
WHAT IS THE LOGO OF RUNMA PHOTOVOLTAIC PANEL



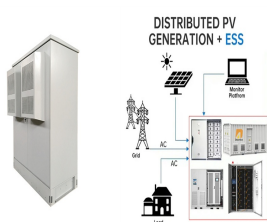
Who is ronma solar group? Ronma Solar Group, established in 2018, is specialized in the research, production, and sales of monocrystalline silicon P-type/N-type solar cells and photovoltaic modules. It is a nationally recognized high-tech enterprise that integrates photovoltaic power station investment, construction, and operation.



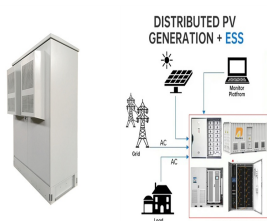
Who is ronma group? Ronma Group, established in 2018, is a national high-tech enterprise focused on the research, manufacturing, and sales of P-type/N-type monocrystalline silicon solar cells and modules. In addition, the company is engaged in the sales and consultation for photovoltaic power plants, including investment, construction, and operation.



Who is Shandong ronma solar? Whether you're looking for a solar solution for your home, business, or industrial facility, Shandong Ronma Solar Co., Ltd. is the supplier you can trust for all your solar needs. Contact us today to learn more about our products and services! Looking for a reliable Solar Manufacturer, Supplier, and Factory in China?

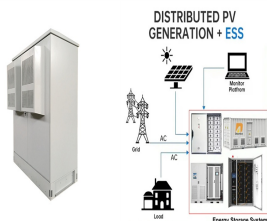


Why should you choose Shandong ronma solar? At Shandong Ronma Solar Co., Ltd., we believe in delivering value to our customers by providing cost-effective solar solutions that help reduce their carbon footprint and save on energy costs. Our products are backed by a team of experienced professionals who are committed to delivering exceptional customer service and support.



What is ronma group's production capacity in 2022? In 2022, the company's production capacity reached 3GW for high-efficiency monocrystalline PERC cells and 2GW for modules. Moreover, Ronma Group is currently building an 8GW high-efficiency TOPcon cell and 3GW high-efficiency module production base in Jinhua, Zhejiang.

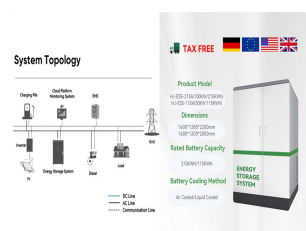
WHAT IS THE LOGO OF RUNMA PHOTOVOLTAIC PANEL



This is a logo for an energy company that offers solar solutions such as solar panel installation, solar inspections, and solar panel cleaning. They also install electric vehicle charging stations for commercial properties. The target audience is homeowners who currently have solar, or could benefit from installing solar.



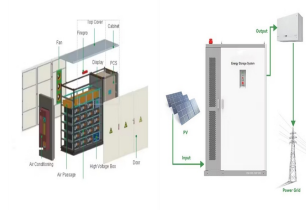
According to the Wikipedia article on EROI, 585 kWh/m² is a median value for the embodied energy of a photovoltaic panel, rated based on surface area.. The "energy invested" critically depends on technology, methodology, and system boundary assumptions, resulting in a range from a maximum of 2000 kWh/m² of module area down to a minimum of 300 kWh/m² ???



The solar panels that you see on power stations and satellites are also called photovoltaic (PV) panels, or photovoltaic cells, which as the name implies (photo meaning "light" and voltaic meaning "electricity"), convert sunlight directly into electricity. A module is a group of panels connected electrically and packaged into a frame (more commonly known as a solar ???



Photovoltaic (PV) systems are one of the most important renewable energy sources worldwide. Learning the basics of solar panel wiring is one of the most important tools in your repertoire of skills for safety and practical reasons, after all, residential PV installations feature voltages of up to 600V.



The PERC solar panel is a highly efficient and improved type of PV technology that uses Crystalline Silicon (c-Si) and fixes some inconveniences of this traditional technology. In this article, we will do a deep and detailed ???

WHAT IS THE LOGO OF RUNMA PHOTOVOLTAIC PANEL



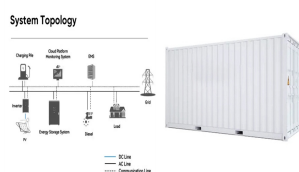
Ronma Solar Group, established in 2018, is specialized in the research, production, and sales of monocrystalline silicon P-type/N-type solar cells and photovoltaic modules. It is a nationally ???



A solar panel's efficiency measures its ability to convert sunlight into usable electricity. If the sun shines on a solar panel with a 20% efficiency rating, 20% of the sun's energy will convert to solar energy in ideal conditions.



The type of solar panel you need depends on the type of system you want to install. For a traditional rooftop solar panel system, you'll usually want monocrystalline panels due to their high efficiency. If you have a big roof with a lot of space, you might choose polycrystalline panels to save money upfront. Want to DIY a portable solar setup on an RV or boat?



Types of solar panels. The type of solar panels you get can affect electricity output, since some solar panel types are more efficient than others.. A solar panel's efficiency indicates how well it converts sunlight into electricity. The higher the efficiency rating, the more electricity it will produce per square metre. Here's what you can expect from different solar ???



Generate your own clean energy whenever the sun is shining with Tesla solar panels. Power everything from your TV to the internet with solar energy. Save excess solar energy in Powerwall for use during storms and outages, or when utility prices are high. Charge your electric vehicle with clean energy at home using Mobile Connector or Wall

WHAT IS THE LOGO OF RUNMA PHOTOVOLTAIC PANEL



A photovoltaic cell is the component of a solar panel that converts sunlight into electricity. These cells are typically made of a crystalline silicon wafer. When sunlight hits the silicon, electrons in the cell are energized and begin to move, initiating a flow of electricity.



Monocrystalline solar panels are the most cost-effective option. Perovskite panels are more efficient and will be on the market soon. Thin film panels are the cheapest, most versatile choice. It's confusing enough trying to find solar panel prices, never mind choosing between the different types of solar panels to pick the right one for your home.



Panasonic. Best for roofs with tight spaces. Panasonic is most commonly known in the U.S. as a TV and small appliance manufacturer, but the Japanese company is also a global leader in solar panels. In 2021, Panasonic ???



We can offer Mono/Poly-crystalline Silicon PERC and N-Type TOPCON Solar Cells with efficiency up to 24%+. Also, we can customize 380-700W photovoltaic modules, including full/half-cutting cell modules, single/dual-glass modules, full black modules and other kinds of photovoltaic ???



You want to ensure that the company you work with uses top-quality solar panels. As a consumer, it can be difficult to determine the highest quality panels as all photovoltaic (PV) panels offer a 25-year warranty. However, there are some key attributes you can research when it comes to determining whether a solar panel provider is high quality:

WHAT IS THE LOGO OF RUNMA PHOTOVOLTAIC PANEL



The Solar Settlement, a sustainable housing community project in Freiburg, Germany Charging station in France that provides energy for electric cars using solar energy Solar panels on the International Space Station. Photovoltaics (PV) is the conversion of light into electricity using semiconducting materials that exhibit the photovoltaic effect, a phenomenon studied in ???



A photovoltaic cell is an electronic component that converts solar energy into electrical energy. This conversion is called the photovoltaic effect, which was discovered in 1839 by French physicist Edmond ???



Our research team has searched extensively for the most efficient panels. All of these products have an efficiency rating of 22.5% or above. The most efficient solar panel is the AIKO 72-cell N-Type ABC White Hole . As solar panel costs have fallen in recent years, solar panel efficiency has increased at a tremendous pace.. You can now choose from countless ???



Since their inception in the 1970s, amorphous silicon cells have become more widely used: amorphous solar panels are now the second most popular thin film solar panel option! Here are some companies that offer amorphous cells and products: Panasonic. Panasonic, one of the leading solar panel brands, has an amorphous solar cell product called



Photovoltaic Panels vs. Solar Panels. When discussing home solar panels, one of the main concerns for households is how efficient the system is. After all, you want a solar system that can produce electricity that will have enough energy ???

WHAT IS THE LOGO OF RUNMA PHOTOVOLTAIC PANEL



We offer a range of solar panels, modules, inverters, and other accessories that are designed to meet the highest standards of quality and efficiency. At Shandong Ronma Solar Co., Ltd., we ???



Use our solar panel calculator to get an idea of how much you could save by installing a solar photovoltaic (PV) system at home. Use the calculator . Based on the information you provide, the solar panel calculator will estimate: What size solar panel system is right for you. How much you could save on your electricity bills.



Some common solar panel system sizes include a 3kW solar panel system, a 4 kilowatt solar panel system and a 5kW solar panels. For instance, a typical 2kW solar panel system suited for 1-3 people will need anywhere between 5 and 8 solar panels (for 350W panels).



Solar energy is energy from the sun that we capture with various technologies, including solar panels. There are two main types of solar energy: photovoltaic (solar panels) and thermal. The "photovoltaic effect" is the mechanism by which solar panels harness the sun's energy to generate electricity.



Our solar panels and all of our solar equipment is backed by factory warranties. On top of that, our monthly solar panel lease plan and prepaid solar panel plan (also known as a solar PPA) come with 24/7 proactive monitoring and free maintenance. If we detect that your rooftop solar panels or solar battery aren't performing optimally, we'll dispatch a specialist to repair your solar panels

WHAT IS THE LOGO OF RUNMA PHOTOVOLTAIC PANEL



There are two main types of solar energy technology: photovoltaics (PV) and solar thermal. Solar PV is the rooftop solar you see on homes and businesses - it produces electricity from solar energy



Most home solar panels that installers offer in 2024 produce between 350 and 450 watts of power, based on thousands of quotes from the EnergySage Marketplace. Each of these panels can produce enough power to run appliances like your TV, microwave, and lights. To power an entire home, most solar panel owners need 17 to 30 solar panels.. The amount of ???