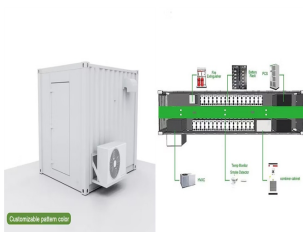


WHAT IS THE PHOTOVOLTAIC PANEL CONSTRUCTION UNIT



Your primary equipment decision is the brand and type of panels for your system. For an easy guide to comparing and contrasting the top panel brands, check out our complete ranking of the best solar panels on the market, which puts panels from SunPower, REC, and Panasonic at the top.. Some factors to consider as you weigh your options are efficiency, cost, ???



Construction of Photovoltaic Cell. The diagram above is a cross-section of a photovoltaic cell taken from a solar panel which is also a type of photovoltaic cell. The cell consists of each a P-type and an N-type material and a PN junction diode sandwiched in between. This layer is responsible for trapping solar energy which converts into



What is the outlook for bifacial modules? Last year, Vincent Ambrose, Canadian Solar's general manager for North America, told Solar Power World that bifacial modules were really going to take off in the next few years. "The challenge with bifacial has always been the unpredictability of the power output because it's dependent upon the substrate behind the ???

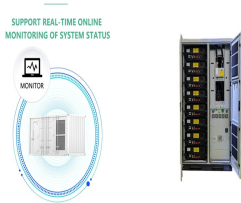


A photovoltaic cell is the most critical part of a solar panel that allows it to convert sunlight into electricity. The two main types of solar cells are monocrystalline and polycrystalline. The "photovoltaic effect" refers to the ???

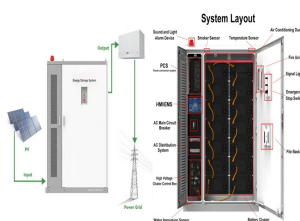


What is photovoltaic (PV) technology and how does it work? PV materials and devices convert sunlight into electrical energy. A single PV device is known as a cell. An individual PV cell is usually small, typically producing about 1 or 2 ???

WHAT IS THE PHOTOVOLTAIC PANEL CONSTRUCTION UNIT



A photovoltaic system, or solar PV system is a power system designed to supply usable solar power by means of photovoltaics. It consists of an arrangement of several components, including solar panels to absorb and directly convert sunlight into electricity, a solar inverter to change the electric current from DC to AC, as well as mounting, cabling and other electrical accessories.



ASCE 7 Guidelines. The American Society of Civil Engineers (ASCE) provides guidelines for the structural design of solar panel installations through their publication, ASCE 7 1. These guidelines cover the essential ???



A photovoltaic system, also called a PV system or solar power system, is an electric power system designed to supply usable solar power by means of photovoltaics consists of an arrangement of several components, including solar panels to absorb and convert sunlight into electricity, a solar inverter to convert the output from direct to alternating current, as well as ???



There are many PV cells within a single solar panel, and the current created by all of the cells together adds up to enough electricity to help power your school, home and businesses. Similar to the cells in a battery, cells in a solar panel are designed to generate electricity; except a battery's cells make electricity from chemicals and a solar panel's cells generate electricity by capturing



Overview History Theory and construction Efficiency Performance and degradation Maintenance Waste and recycling Production

WHAT IS THE PHOTOVOLTAIC PANEL CONSTRUCTION UNIT



Solar array mounted on a rooftop. A solar panel is a device that converts sunlight into electricity by using photovoltaic (PV) cells. PV cells are made of materials that produce excited electrons when exposed to light. The electrons flow ???



Photovoltaic modules: a photovoltaic system captures the energy radiated by the sun thanks to the use of special components called photovoltaic modules that is able to produce electricity when hit by sunlight. Support structures of the ???



A perovskite solar cell. A perovskite solar cell (PSC) is a type of solar cell that includes a perovskite-structured compound, most commonly a hybrid organic???inorganic lead or tin halide-based material as the light-harvesting active layer. [1] [2] Perovskite materials, such as methylammonium lead halides and all-inorganic cesium lead halide, are cheap to produce and ???



Aluminum, for example, is used in almost every solar panel made, regardless of the type of the panel, again tying the price of the metal inextricably to the cost of manufacture. Other materials, such as perovskite, cadmium, and copper are also used in the manufacture of different types of PV panels and their costs must be taken into account, especially given their ???

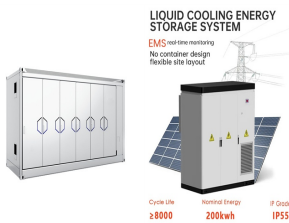


Solar panel systems typically begin with the production of monocrystalline silicon ingots, which are large blocks of single-crystal silicon material. These ingots are then cut into thin wafers that form the basis of each ???

WHAT IS THE PHOTOVOLTAIC PANEL CONSTRUCTION UNIT



A solar panel's metal frame is useful for many reasons; protecting against inclement weather conditions or otherwise dangerous scenarios and helping mount the solar panel at the desired angle. Glass sheet. The glass casing sheet is usually 6-7 millimeters thick, and although it is thin, it plays a significant role in protecting the silicon



A photovoltaic (PV) system is composed of one or more solar panels combined with an inverter and other electrical and mechanical hardware that use energy from the Sun to generate electricity. PV systems can vary greatly in size from small rooftop or portable systems to massive utility-scale generation plants. Although PV systems can operate by themselves as off-grid PV ???



Gigawatt (GW): We measure the cumulative capacity of community solar nationwide in terms of GW. One GW = 1,000 megwatts. Inverter: Component of a solar panel system that converts the electricity generated by ???



We explain how silicon crystalline solar cells are manufactured from silica sand and assembled to create a common solar panel made up of 6 main components - Silicon PV cells, toughened glass, EVA film layers, protective back sheet, junction box with connection cables. All assembled in a tough alumin



Solar Arrays Construction and Mounting. When solar arrays are installed on a property, they must be mounted at an angle to best receive sunlight. For example, if one solar panel is shaded by a tree, it will not affect the output of any other solar panels. Microinverters also eliminate the need for potentially hazardous high-voltage DC wiring.

WHAT IS THE PHOTOVOLTAIC PANEL CONSTRUCTION UNIT



Power electronics for PV modules, including power optimizers and inverters, are assembled on electronic circuit boards. This hardware converts direct current (DC) electricity, which is what a solar panel generates, to alternating current (AC) electricity, which the electrical grid uses. Learn more about how inverters work.



A Solar panels (also known as "PV panels") is a device that converts light from the sun, which is composed of particles of energy called "photons", into electricity that can be used to power electrical loads. Solar panels can be used for a wide variety of applications including remote power systems for cabins, telecommunications equipment, remote sensing, and of course for the ???



A photovoltaic cell is an electronic component that converts solar energy into electrical energy. This conversion is called the photovoltaic effect, which was discovered in 1839 by French physicist Edmond Becquerel¹. It was not until the 1960s that photovoltaic cells found their first practical application in satellite technology. Solar panels, which are made up of PV ???



PV modules are the primary components in a solar panel, converting light directly to electricity. There are two primary types: Silicon PV and Thin Film PV. See also: Carbon Footprint of Solar Panel Manufacturing: Unmasking the Environmental Impact. Solar Panel Components. Solar panel manufacturing begins with understanding what goes into a panel.



However, homes and businesses can use smaller ones. It simply depends on the size of the plant. The four main components of a solar power plant system are the; Solar Panels; Charge Controller; Inverter; Battery Bank; What are Solar Panel Accessories? The solar panel accessories can vary depending on the type and style of the panel you operate.

WHAT IS THE PHOTOVOLTAIC PANEL CONSTRUCTION UNIT



Solar panel costs are decreasing. According to the latest UK government data [1], the cost of solar panels in the UK is at its lowest level in almost 2 years fact, between March 2023 and 2024, the median cost per kilowatt (kW) for a 0 to 4kW solar panel system has dropped more than 20 per cent.. Combine that with the falling costs of solar battery storage, and the ???



NREL analyzes the total costs associated with installing photovoltaic (PV) systems for residential rooftop, commercial rooftop, and utility-scale ground-mount systems. This work has grown to include cost models for solar-plus-storage systems.



What are Major Solar Panel Construction Materials? Materials used in the construction of solar photovoltaic modules include: 1. Silicon: Monocrystalline Silicon: Known for high efficiency. Multi-crystalline Silicon: ???



Solar panel power output is rated at a cell temperature of 25°C or STC (Standard Test Conditions), so every degree above this slightly reduces power output. In common multi and monocrystalline cells, the temperature ???



The photovoltaic effect is a process that generates voltage or electric current in a photovoltaic cell when it is exposed to sunlight. These solar cells are composed of two different types of semiconductors???: a p-type and an n-type???: that are joined together to create a p-n junction joining these two types of semiconductors, an electric field is formed in the region of the ???