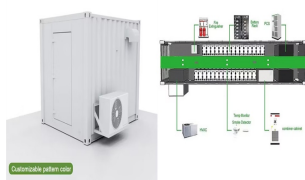


# WHAT IS THE SIZE OF A 700W PHOTOVOLTAIC PANEL



The race to produce the most efficient solar panel heats up. Until mid-2024, SunPower, now known as Maxeon, was still in the top spot with the new Maxeon 7 series. Maxeon (Sunpower) led the solar industry for over a ???



For example, a 12v solar panel might put out up to 19 volts. While a 12v battery can take up to 14 or 15 volts when charging, 19 volts is simply too much and could lead to damage from overcharging. This will help you size your solar panels, as well as all of the other components in your system. When it comes to sizing your system properly



The solar panel industry showcases a dynamic interplay between panel size and efficiency, a relationship that fundamentally shapes the performance and practicality of photovoltaic systems. Panel size refers to the physical dimensions of a solar panel, determining its surface area and, consequently, the amount of sunlight it can capture.



700W Solar Panel Detail; Parameters; Rosen Solar is professional manufacturer of solar panel. Monocrystalline 132cells Solar Panel. Power Range: 605~700W Size. 2385\*1303\*35mm. Warranty. 25 year Power Warranty. Home. Send a message. Call us. Send a message. Email

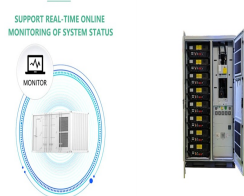


Every solar panel be it mono or poly is made by connecting solar cells in series and parallel arrangement, the standard size of a solar cell is 156 mm X 156 mm (approx. 6 inch X 6 inch). For a 60 cell solar panel the cell arrangement can ???

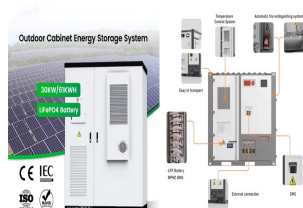
# WHAT IS THE SIZE OF A 700W PHOTOVOLTAIC PANEL



Solar Panels are the Practical Choice. We have the perfect climate for solar power production. We also have an unstable grid, making solar a practical and reliable source of power. Solar systems are an investment because you will be ???



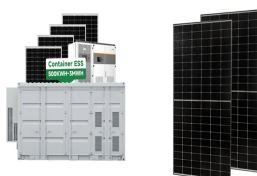
The weight of a solar panel per unit is an important consideration when deciding which size is best for your home, which we will discuss further in a later section. Kilograms per Square Meter 100-watt solar panels that are 8.53 kilograms and measure 1.19 meters long by 0.16 meters wide have an area of 0.65 square meters.



For detailed information on average solar panel costs, you can check out our guide on How Much Does A Solar Panel Cost. 3. Power Output. Highest Wattage Panels: Offer superior power output, typically ranging from 500W to 700W. Standard Wattage Panels: Provide lower power output, generally below 400W.



What is a 700W solar panel. A 700W solar panel is the most common type of solar power panels used in residential applications. This means that a charge controller that can handle 700 watts of power is a good fit. Next, you'll need to calculate your wattage requirements and size of grid-tie system (or off-grid) you will be using.



Quantity (0 in cart) Decrease quantity for 700W Mono Solar Panel  
Increase quantity for 700W Mono Solar Panel. Add to cart This item is a recurring or deferred purchase. By continuing, I Due to the large size of these panels, we are only able to provide free delivery for orders of 4 panels or more. Orders will be delivered on an oversized

# WHAT IS THE SIZE OF A 700W PHOTOVOLTAIC PANEL



Solar Panel Size. It focuses on maximum electricity generation and overall capacity rather than the quantity of panels. To calculate the required system size, multiply the number of panels by the output. For example, a 6.6 ???



-700W is the super Hi-efficiency series of solar panels manufactured by Loom Solar. Shark Bi-facial is a solar panel that produces power from the front and backside. The guaranteed generation is 575 watts at STC while Bi-facial ???



Summary. You need around 200-400 watts of solar panels to charge many common 12V lithium battery sizes from 100% depth of discharge in 5 peak sun hours with an MPPT charge controller.; You need around 150-300 watts of solar panels to charge many common 12V lead acid battery sizes from 50% depth of discharge in 5 peak sun hours with an ???



Highest Watt Solar Panel ??? (Available 700w!) September 8, 2023 May 8, They're commercial solar panels because of their size. In the past, most solar panels gained wattage by improving efficiency. However, the trend seems to lean towards larger solar panels that get more wattage in recent years. remember they only produce around 70

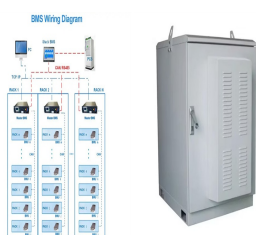


Canadian Solar 700W Solar Panel 132 Cells Bifacial CS7N-700TB-AG Commercial 496 panels per Container. Rated Power Output 700 W; Voltage (VOC) 47.9V; Number of cells 132; Cell Type Monocrystalline; Delivery on Dec 11???16. \$0.34 /pw. \$238.70 /panel. View product. 496 pcs (1 CNTR) In stock. 36% OFF = 560.

# WHAT IS THE SIZE OF A 700W PHOTOVOLTAIC PANEL



The average temperature coefficient for a solar panel is  $-0.32\%/^{\circ}\text{C}$ , which means for every degree above  $25^{\circ}\text{C}$ , a solar panel's output falls by a miniscule  $0.32\%$ . However, even if your solar panels were to reach the dizzying heights of  $50^{\circ}\text{C}$ , they would still be operating at roughly  $92\%$  of their original capacity - not a very significant loss at all.



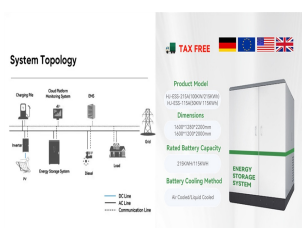
Discover which solar panel sizes and dimensions are the most common in the UK, as well as which size is the best for your home. 0330 818 7480. Become a Partner. Menu. Solar Panels. Heat Pumps. Boilers. Windows. Doors In the solar panel size chart below, we've broken down the standard solar PV panel sizes by their average cost range.



A 4kW solar panel system is suitable for the average home in the UK and costs around  $\pounds 5,000$  ???  $\pounds 6,000$ .; The estimated average yearly savings you can expect with a solar panel system range from  $\pounds 440$  to  $\pounds 1,005$ .; If you install a 4kW solar panel system, you will break even on your investment in about 8 years. Since solar panels have a lifespan of about 25 years, you will be ???



Solar panels come in various sizes depending on their wattage or power output. A common residential solar panel size is approximately 65 inches by 39 inches, and typically has a power output of around 300 watts. Larger panels, more common in commercial and industrial installations, can be over 78 inches by 39 inches and produce more than 400



Many solar panel companies make small solar panels designed specifically for small roofs. You can also opt for high-efficiency solar panels that have conversion rates as high as  $23\%$  (compared to the industry average of  $18\%$ ). Average Solar Panel Dimensions UK . Here is the average solar panel dimensions in the UK:

# WHAT IS THE SIZE OF A 700W PHOTOVOLTAIC PANEL



Some common solar panel system sizes include a 3kW solar panel system, a 4 kilowatt solar panel system and a 5kW solar panels. For instance, a typical 2kW solar panel system suited for 1-3 people will need ???



Big solar panel system: 1kW, 4kW, 5kW, 10kW system. These include several solar panels connected together in a system (2 ??? 50 solar panels). Here you can simply input what size solar panel you have (100W, 200W, 300W, and so on) and how many peak sun hours you get (average is about 5 hours).



A full campervan electrical system powered entirely by solar energy can be supported by a 700w system all year. A 700-watt solar panel can also be used to power a small business. An 800-watt solar panel can offer a dependable power source for many years with proper installation and upkeep. Cell Size: Wafer Type: Cell Technology: Efficiency



The SSM680-710W solar panel by Sunergy Solar is a high-performance [] View Product Download PDF. Recsun Solar 700 Watt Presenting the GS6 and GS7 Series 660-700W solar modules by Group [] View Product Download PDF. Powitt Solar 700 Watt . Region: China.



A 20A MPPT charge controller can be enough for a small solar panel system, typically handling around 300-400 watts of solar panel capacity. How many panels can a 30 amp MPPT charge controller handle? A 30 amp MPPT charge controller can handle around 400-600 watts of solar panel capacity, so the number of panels depends on their individual wattage.

# WHAT IS THE SIZE OF A 700W PHOTOVOLTAIC PANEL

---



Bluesun N-type 700Watt Solar Panel Bifacial 210 cell 700w Solar PV Module. Item NO.: BSM700PMB6-70SDC; Solar cell : N-Type Monocrystalline 210mm; Number of cells : 408(68\*6) Power range : 675W-700W; Size : 2355\*1303\*35mm; Certificate : TUV, CE; Lead time : 10 days; Payment : T/T, L/C; Warranty : 15 years; Bluesun N-type 700Watt Solar Panel



A 700w solar panel is a perfect solution for homeowners looking to build a large system, as they can generate more energy from the available sunlight. Businesses and industries with high energy demands can also take advantage of 700W solar panels to offset a larger portion of their electricity consumption or generate electricity for sale.