

WHAT IS THE SIZE OF A SQUARE PHOTOVOLTAIC PANEL



The average size of a solar panel is approximately 65 inches long and 39 inches wide. This solar panel size comes with around 60 photovoltaic (PV) cells, a depth of 1.5 to 2 inches, and a square foot area of 17.62 feet.



The size of a solar panel should be chosen based on factors such as available space, energy needs, and budget. Solar panels can be combined to create larger systems, and the size of the system will depend on ???



A solar panel's power output is measured in kilowatts (kW) Solar PV system size (kW) Number of panels Annual electricity output (kWh) 1-2 bedrooms. 1,800. 2.1. 6. 1,587. 3 bedrooms. 2,700. 3.5. 10. 2,645. the more electricity it will produce per square metre. Here's what you can expect from different solar panel types



For a residential solar panel, size is fairly consistent across manufacturers: 65 inches (1.65 meters) by 39 inches (1 meter) is the average solar panel size that you find on the roofs of houses. 5.4 feet by 3.25 feet or 15 square feet 60 solar cells 40 pounds each Standard commercial panel 6.5 feet by 3.35 feet 72 solar cells 50 pounds



To select the right solar panel size, it is important to know the standard solar panel sizes available on the market. Every solar panel consists of solar cells, which are typically 6-by-6 inches

WHAT IS THE SIZE OF A SQUARE PHOTOVOLTAIC PANEL



Solar Panel Size. It focuses on maximum electricity generation and overall capacity rather than the quantity of panels. To calculate the required system size, For example, a 1,500-square-foot house can need around 630 ???



The size of a 300w solar panel A 300w solar panel is generally a popular choice for residential applications and small commercial systems thanks to its balance of performance and footprint. A panel of this wattage can generate enough energy to power multiple home appliances and significantly help reduce energy costs.



In the solar world, panel efficiency has traditionally been the factor most manufacturers strived to lead. However, over the last 3 to 4 years, a new battle emerged to develop the world's most powerful solar panel, with ???



The race to produce the most efficient solar panel heats up. Until mid-2024, SunPower, now known as Maxeon, was still in the top spot with the new Maxeon 7 series. Maxeon (Sunpower) led the solar industry for over a decade until lesser-known manufacturer Aiko Solar launched the advanced Neostar Series panels in 2023 with an impressive 23.6% module ???



It will weigh 2.69 pounds per square foot. A 200-watt solar panel that is 23.28 pounds and measures 5.38 feet long by 3.26 feet wide will have an area of 17.54 square feet. Thus, it will weigh 1.33 pounds per square foot. A 100-watt solar panel the same size as that mentioned above weighs 0.18 pounds per watt.

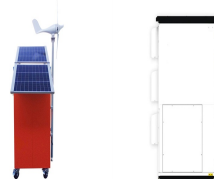
WHAT IS THE SIZE OF A SQUARE PHOTOVOLTAIC PANEL



Solar panel size refers to the total amount of power a solar panel can generate over a period of time; Solar panel dimensions refers to the physical size of a solar panel; Solar panel sizes and wattage range from 250W ???



The average size of a solar panel cell measures 6" by 6" square. How many solar panels do I need for my home? The average home requires around 20 solar panels to completely offset its utility costs. How big is one solar panel? The ???



Factors affecting the choice of solar panel size include roof space, solar power needed, efficiency, and weight, with smaller roofs often requiring premium-grade panels. They differ in size as well the number of panels per square feet area. Most residential panels have a smaller surface area size to adapt to the roof space and aesthetic



Additionally, we have created tables which give you examples of solar panel size based on wattage and solar cell type. How Big Are Standard Solar Panels? Standard residential solar panels, the ones you would have installed onto your homes roof, measure on average 65 inches by 39 inches, or 5.4 feet by 3.25 feet, covering an area of 15 square



A 4kW solar panel system costs around ?9,500 to buy and install. If you want to include a battery in the installation, this will add around ?2,000 to the price, for an overall cost of ?11,500.

WHAT IS THE SIZE OF A SQUARE PHOTOVOLTAIC PANEL



An average solar panel system requires between 15 to 19 solar panels and takes up 260 to 340 square feet of space. Solar panel efficiency, output, a good warranty, and a trusted brand are more important than focusing on solar panel size. You'll see the size of a solar panel described by how many cells it has. 60-cell panels are usually laid



For example, a 60-cell polycrystalline solar panel may generate 250W while a 60-cell monocrystalline solar panel can generate over 300 W for the same physical size. In other words, "efficiency", a.k.a. power produced per unit area matters more than the physical dimensions of a solar panel.



For example, the equivalent of a 60 cell solar panel is a 120 half-cut cell solar panel. The equivalent of a 72 cell solar panel is a 144 half-cut cell solar panel. 120 half-cut cell solar panels are roughly the same size as 60 cell solar panels, and 144 half-cut cell solar panels are roughly the same size as 72 cell solar panels.

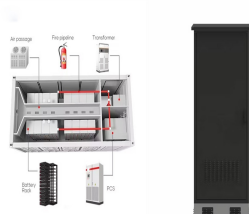


With the bright light conditions and the efficiency as measured, calculate the size of solar panel required to power: A radio of average power demand approximately 0.1 Watt. $A = 125$ square meters. This is for panels lying flat on the ground. We would suggest that an area of at least 200 square meters must be reserved due to the following



The variation in output will usually not change the size of a single solar panel. The standard size of a 250W solar panel is approximately 1.7m x 1.0m, with slight variations depending on the manufacturer. The ???

WHAT IS THE SIZE OF A SQUARE PHOTOVOLTAIC PANEL



Shorter lifespan ??? this solar panel size typically lasts for 10-20 years. Frequently Asked Questions. To understand solar panel size better, here's a list of FAQs about the best solar panels system. What Is the Typical Size/Dimensions of a Solar Panel? The standard solar panel dimensions can vary depending on the type and manufacturer.



Here's a general idea of how much space different sized solar panel systems take up (in square metres ??? m²): Surface area. 1 kWp. 3. 6 m². 2 kWp. 6. 12 m². 3.5 kWp. 10. 20 m². 5 kWp. 14. 28 m² *based of the average solar panel size of two square metres. 3. Find out how big your roof is.



What is the Solar Panel Size in Feet? The cell layout of a 60-cell solar panel is 6x???10 (6 columns and 10 rows). The cell layout of a 72-cell solar panel is 6x???12 (6 columns and 12 rows). Melted silicon pieces are poured into a square mold. Because of this, polycrystalline cells are substantially more cost-effective, and their



4 ? Consider solar panel size and weight before making bigger plans for installing a solar system because they are the basics of solar panels. Remarkably, there isn't a huge variation between brands, The area of a residential 60-cell solar panel is 17.62 square feet, and a commercial 72-cell solar panel has an area of 21.13 square feet.



When it comes to investing in solar energy, choosing the right solar panel size is bottom-line. Indeed, it's not just about finding something that fits your roof. Approximately 1.95 square meters per panel for 400???450-watt panels. Thickness: Generally 30???40 millimeters. Typically around 35???40 millimeters. Weight: 18???21 kg:

WHAT IS THE SIZE OF A SQUARE PHOTOVOLTAIC PANEL



Solar Panel System Size Number of Solar Panels Required For much of the last decade, the industry-standard panel size was 156mm x 156mm or 6-inch square cell format. The new panel sizes, up to 2.4m long and 1.3m broad, are based on the larger 180 and 210mm wafer (based silicon cells are fabricated from slices of either single-crystal or



Use our solar panel calculator to get an idea of what size system is right for you. Get quotes from at least three installers. Make sure the installers you look at are MCS-certified, which ensures they adhere to a strict code of conduct.



To calculate the KWp (kilowatt-peak) of a solar panel system, you need to determine the total solar panel area and the solar panel yield, expressed as a percentage. Here are the steps involved in this calculation: 1. Find the total solar panel area (A) in square meters by multiplying the number of panels with the area of each panel. 2.

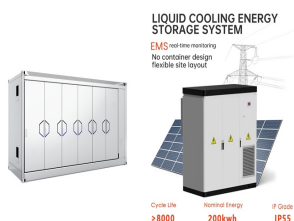


Solar panel dimensions depend on how many cells are in each panel, as cell size is pretty uniform across all brands of residential solar panels. Each cell is usually 156 millimeters by 156 millimeters, or 6 inches long and 6 ???



How solar panel size and dimensions affects the system design. When it comes to designing a optimal solar system the solar panel size plays a key role: The height and width of each panel will determine how many solar panels can fit on your available roof space;

WHAT IS THE SIZE OF A SQUARE PHOTOVOLTAIC PANEL



Solar panels generate clean energy and significant savings, but they aren't a one-size-fits-all solution. The size and weight of solar panels vary depending on the make and model, with most residential panels measuring about 5.5 feet ???