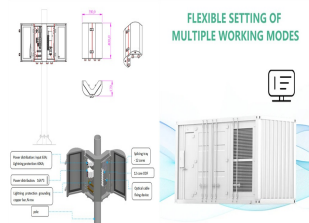
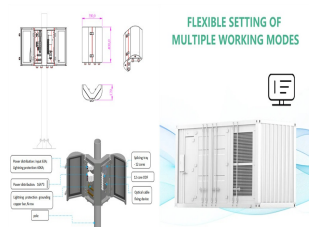


What is the difference between top-of-pole and ground-mounted solar racks? Therefore, ground-mounted racks are only recommended for secure locations preferably in clean and stable environments (with few snow or dirt on-ground). Top-of-pole mounted racks are structures where mounting poles are secured into the ground and tightened with concrete and the solar module is mounted on the top of the poles.

WHAT IS THE SIZE OF THE DOUBLE-ROW PHOTOVOLTAIC BRACKET



What is a building integrated photovoltaic (BIPV)? It started feeding electricity to the National Grid in November 2005 Building-integrated photovoltaics (BIPV) are photovoltaic materials that are used to replace conventional building materials in parts of the building envelope such as the roof (tiles), skylights, or facades.



The installation selection of photovoltaic ground brackets is mainly based on factors such as the fixing method of the bracket, terrain requirements, material selection, and the weather resistance, strength and stiffness of the bracket. First of all, there are many fixing methods, such as pile foundation method (direct burial method), concrete block weight method, pre-embedded ???



This is a specific stainless steel solar panel bracket for bent tiled roofs, 5mm thick with an adjustment from 6 to 9.5 cm. This adjustable high bracket is suitable for all roofs with pitched tiles. K102D01 ??? High bracket for fixing photovoltaic and solar panels on bent tiled roofs - Description

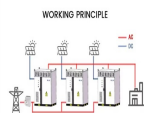


Global Photovoltaic Tracking Bracket Market Report 2024 Market Size Split by Type (Two-row Component Tracking, Single-row Component Tracking), by Application (Commercial, Residential, Industrial) "Global Photovoltaic Tracking Bracket market size 2023 was XX Million. Photovoltaic Tracking Bracket Industry compound annual growth rate (CAGR



Double-row Products. Solar Energy Power System Single Axis Tracking Bracket. US\$0.02-0.03 / wa. 1 wa (MOQ) Photovoltaic Vehicle Shed Solar Carport Solar Energy Power System It is one of the largest professional manufacturers of photovoltaic brackets in China and the Asia-Pacific region. International Aluminum has introduced more than 200

WHAT IS THE SIZE OF THE DOUBLE-ROW PHOTOVOLTAIC BRACKET



Types of Tiles Suitable for Solar Panel Integration. Choosing the right type of tiles is crucial. The integration of solar panels requires careful consideration of factors such as weight, durability, aesthetics, compatibility with mounting systems, and cost implications. Different Tile Materials Suitable for Solar Panel Integration. Clay Tiles:



Parking Configuration: Clients can choose between single-row and double-row parking setups to maximize space efficiency and meet the specific parking capacity needs of their site. Alignment and Orientation: The alignment of the carport can be adjusted to optimize solar panel exposure to the sun, enhancing energy generation efficiency. This



Specifically, the flexible photovoltaic bracket can be customized according to the shape and size of the roof, and is suitable for various types of roofs, such as flat roofs, pitched roofs, corrugated roofs, etc.; at the same time, it can also be adjusted according to the unevenness of the ground, suitable for various types of ground, such as deserts, mountains, grasslands, etc.; in addition



Solar panel ballast mounting systems are simple and effective solutions for non-penetrating flat roof installations and can also be used for ground-mounted solar projects. Bracket Material: AL6005-T5 (surface anodized) Fastener Material: Zinc-nickel alloy & SUS304 The double-row tripod without bottom beam RMIV is optimized based on the

114KWh ESS



Speaking about solar PV systems most people usually refer at first to solar panels, secondly to inverters and batteries, thirdly to charge controllers. But what about the structures you need to mount your system on a roof or a tracking ???

114KWh ESS

WHAT IS THE SIZE OF THE DOUBLE-ROW PHOTOVOLTAIC BRACKET



First, we should know the commonly used solar panel bracket types in the market. Then choose the appropriate solar bracket for panel installation, make full use of space. 1??? Pitched roof solar panel support: According to different roof materials, SunRack solar car parking solar rack mount can be designed as single row and double row



The rapid growth in installed capacity has led to a significant increase in the land footprint of PV power station construction [13] is projected that by the end of 2060, the PV installed capacity of China will exceed 3 billion kWp [14]. Under current installation requirements, this would require roughly 0.1 million km² of land area. Given the scarcity of land, it becomes ???



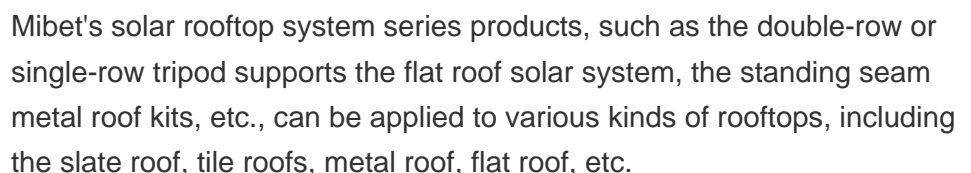
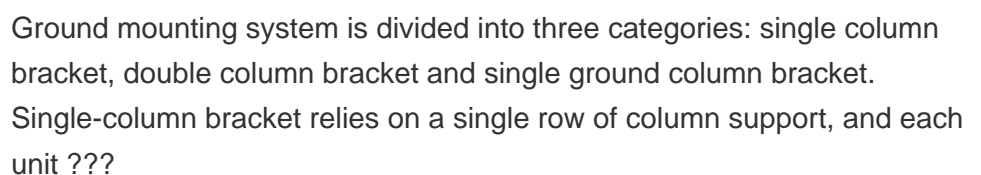
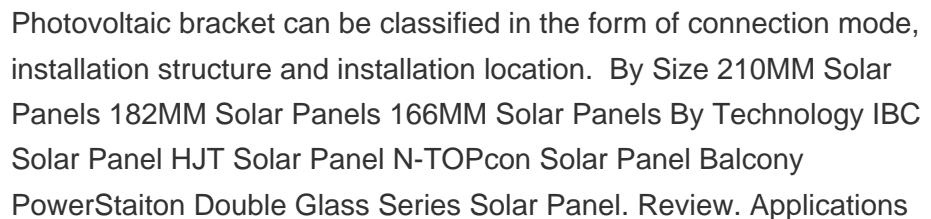
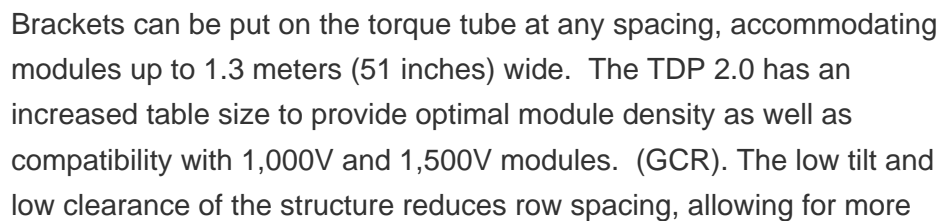
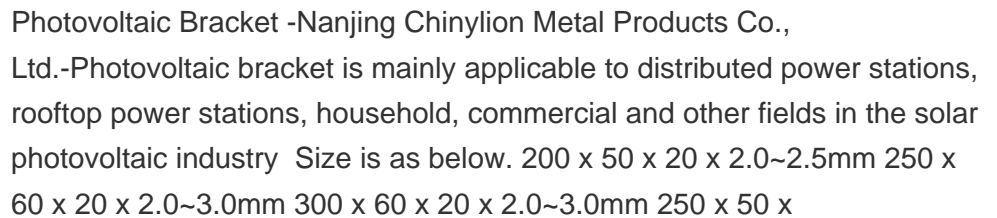
In some coastal areas, because of the frequent hurricanes, the strength requirements for photovoltaic brackets are very strict, which requires PV bracket manufacturers to be able to design a sufficiently strong solar bracket system. However, the increase in strength is always accompanied by an increase in cost.



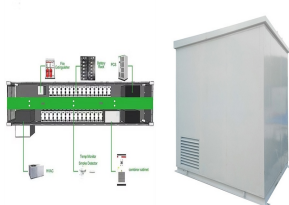
The automatic tracking type bracket is further divided into a single-axis tracking bracket and a double-axis tracking bracket. Fixed mounts are also known as fixed-tilt mounts, where the tilt and orientation of the assembly ???



The roof type photovoltaic bracket is usually divided into two kinds of flat roof bracket and inclined roof bracket. Suspended photovoltaic bracket: usually installed at the bottom of buildings or other structures, using steel ropes to hang solar panels, the tilt angle or direction of the photovoltaic bracket can be adjusted as needed.



WHAT IS THE SIZE OF THE DOUBLE-ROW PHOTOVOLTAIC BRACKET



Number of pieces: 16 Posts per row: Average of 9 or more Row lengths: Up to 94 Slope tolerances: Max Slope grade is 20% N/S and unlimited E/W Certifications: UL 3703, UL 2703 & IEC 62817 Details: Built tough for increased strength (and in either 1P or 2P formats), Terrasmart's durable mechanics ensure reliable performance. Adaptable to any terrain, ???



6 ? Double-pole Photovoltaic Bracket: The structure of the double-pole bracket is more complex, and the material usage and processing costs are higher, leading to a larger initial investment. However, it ensures better installation angles and stability for the photovoltaic panels, improving power generation efficiency.



The results showed that for the integrated double row PV modules, the optimal inclination angle of the upper and lower rows of PV modules were 29° and 39° respectively. Under three typical working conditions, the maximum stress of ???



China leading provider of PV Panel Mounting Brackets and Adjustable Solar Panel Bracket, Jiangsu Guoqiang SingSun Energy Co., Ltd. is Adjustable Solar Panel Bracket factory. Jiangsu Guoqiang SingSun Energy Co., Ltd. GQ-T To Sun Tracker System, Single Row Independent Tracking System, Excellent Stability

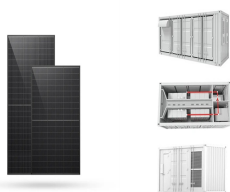


What is Solar Panel Mounting and Racking? Solar panel mounts and racks are specialized equipment systems used to install solar panel arrays in a secure, stable position. Solar panel arrays can be mounted in many ways: on building roofs, ???

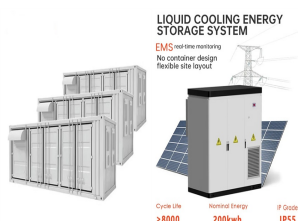
WHAT IS THE SIZE OF THE DOUBLE-ROW PHOTOVOLTAIC BRACKET



The KTO2210 aluminium support system enables the installation of a double row of photovoltaic modules arranged horizontally with a fixed 30° tilt. The universal terminal KMTU2950 and central terminal KMCU2950 are snapped onto the short side of the modules. Richiedi informazioni. Scarica scheda tecnica. Profili compatibili. PRT2334.



Solar panel brackets are installed by fastening bolts or applying adhesive on the mounting rails onto a flat surface. Solar panels should be installed at an angle because it allows the cells to receive as much sunlight as possible. The rail size for the WindyNation mount is 22-28 inches, but for yours they may be different. Double check to



The Van der Valk ValkPitched - Clamp | Fibre PV mounting system is designed for both residential and commercial corrugated fibre sheet roofs, seamlessly integrating solar technology into your property. Van der Valk Mounting Kits for Double Row of Solar Panels in Portrait for Corrugated Fibre Sheet Roofs . By Van der Valk. Size.



How many mounting brackets does a solar panel need? The number of mounting brackets needed for a solar panel depends on factors like the panel's size and weight, as well as the specific mounting system used. Usually, a standard residential solar panel will need at least 4 mounting brackets ??? one for each corner.



There are two basic types of basic geometry, single and double. The single-column foundation is the basis for a single-row foundation support architecture . The single row of columns are aligned along the length of the array toward the center of the front and rear array dimensions to the rear 3/4. Various rack configurations can be installed.