

WHAT KIND OF PHOTOVOLTAIC PANELS ARE SUITABLE FOR SUNROOMS



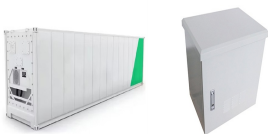
Interestingly, flat roofs are the most suitable for solar panels, as the optimal angle can be created with panel mounts, and flat roofs are generally easier for technicians to work on. Orientation : In Spain and other northern hemisphere locations, south-facing panels receive the most sunlight and, therefore, generate the most energy.



Also See: Top 20 Solar Panel Manufacturers in the World. Cost of Solar Panel Types. The average 6KW system price including only materials ranges from \$6,000 to \$9,000. However, installation and labour fees could increase the total from \$2.50 to \$3.50 per watt. Below is an approximate breakdown of the solar panel types by cost per watt:



The most common type of solar panel system used for domestic homes is PV ??? photovoltaic ??? panels. They collect energy from the sun in photovoltaic cells, which is then passed through an inverter to generate electricity.



The average solar panel takes up 2m², and your installer should leave around 40cm on each side of the array, as well as 3cm between every panel. In addition, your installer will need to leave space around any extra ???



The most efficient commercially available solar panel is a monocrystalline solar panel, which has an average efficiency rating of 18-24%. Perovskite solar panels have been known to achieve efficiencies over 30%, ???

WHAT KIND OF PHOTOVOLTAIC PANELS ARE SUITABLE FOR SUNROOMS



5 ? The most common type of sunroom has windows facing south or west for maximum exposure to sunlight. A sunroom can also be created by placing glass panels near the roof line to capture light from above. Solar panel installations must meet the appropriate building codes. Quite frankly, this is a more complicated than the average home DIYer is

Commercial and Industrial ESS

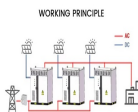
- Budget-Friendly Solution
- Renewable Energy Integration
- Reduced Energy Storage Expenses



Each type of solar panel varies in how much power it can produce. If you have limited roof space, choose a high-efficiency solar panel to get the most out of your system. Crystalline solar panels: Middle- to high ???



Solar energy has become pivotal in South Africa as a reliable solution to the country's power generation problems. As an increasing amount of households and businesses are considering solar energy, it is important to understand the diverse types of solar panel technology in 2024 and to calculate solar panel efficiency.. In this article, we will provide an overview of ???



Photovoltaic (PV) solar panels are the most common type of solar panel used in Ireland. They work by converting the sun's energy into electricity using the photovoltaic effect. One of the first questions people ask when considering solar panels in Ireland is whether the country's climate is suitable for solar energy. Sep 1, 2024 5 min read.



Most tiled roofs are suitable for solar panel installations. However, because tiled roofs are ridged, the panels will need to be installed on frames, this in effect will raise the panels above the roof. This makes them the ideal roofing type for solar panel installations ??? allowing for easy attachment of solar arrays (thin film or

WHAT KIND OF PHOTOVOLTAIC PANELS ARE SUITABLE FOR SUNROOMS



Solar panels use the latest technology and achieve high efficiency. The safety glass can withstand strong winds and cope with heavy snow cover (450 kg/m²). Basic size of the solar panel: 2 x 1 metre. The most common type of a photovoltaic panel (it may vary according to the availability; it will be specified after sending a non-binding inquiry):



A solar photovoltaic system is a renewable energy technology that has the complete setup required to harness solar energy as electricity. These systems can be on-grid systems, where the solar energy is converted into AC power to integrate into the grid, or they can be standalone or off-grid AC or DC power systems. Let's take a look at three



The most widely used type of photovoltaic panel is the "double-glass" type, consisting of two highly weatherproof transparent panes held together by plastic silicone. Although solar energy is more than sufficient for human needs, in practice it would be impossible to harness even half of it in conventional photovoltaic systems; this is



These systems consist of photovoltaic (PV) panels that are installed on the roof of a building, where they can capture sunlight and convert it into usable energy. Rooftop solar is particularly attractive because it allows individuals to reduce their reliance on traditional power sources, lower their energy bills, and even sell excess power back to the grid.

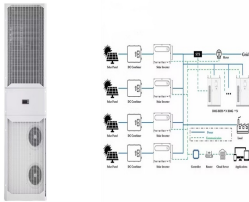


Despite these disadvantages, solar energy has found some special applications where it is the best option to use it. The applications of solar cells are for power in space vehicles and satellites, remote radio communication booster stations, rooftop ???

WHAT KIND OF PHOTOVOLTAIC PANELS ARE SUITABLE FOR SUNROOMS



Tar: Commonly used on flat roofs and suitable for solar panel installation when properly reinforced and installed by a solar panel installer. Gravel: Like tar roofs. Wood: Not the best option due to fire safety concerns but still possible. However, it's important to note that not all roofing materials are ideal for solar panels.



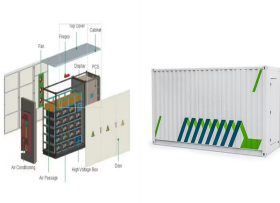
Beyond these three main categories, you might have also heard about N-type, P-type, HJT, or TOPCon gaining attention. These refer to advanced innovations within the monocrystalline panels. The solar industry is transitioning from P-type panels to the more efficient and longer-lasting N-type panels. Similarly, PERC technology is being upgraded to HJT and ???



All types of solar Panels are used to convert solar energy into electricity. Each panel consists of several individual solar cells. Each panel consists of several individual solar cells. Most commonly used solar panels ???



Discover how a solar panel sunroom reduces energy consumption and enhances comfort. -Adding solar panels increases the initial outlay cost of a sunroom. Your sunroom's size and the kind of panels will determine this range from \$5,000 to \$15,000. Choose insulation and energy-efficient windows to maintain year-round a suitable



In roof solar, or integrated solar panels are the ideal solution for new builds or anyone looking to re-roof there home. Many customers opt for an in-roof system because of the sleeker aesthetics. As the solar panel sit snugs within a tray, there is no space for birds to nest under and the panels appear flush with the rest of the roof. However, this does result in less ???

WHAT KIND OF PHOTOVOLTAIC PANELS ARE SUITABLE FOR SUNROOMS



Although simple to do, it can prove to be more expensive than installing solar panels on a tilted roof of a different material. Despite this, for homeowners with a flat roof, this is still an ideal and viable option for solar panel installation. The benefits of tar and gravel roofing: Allows for quick and simple solar panel installation.



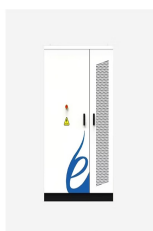
Each type of solar inverter has its unique features and applications, making the choice of inverter a critical decision in the design of a solar energy system. In this guide, we'll explore the various types of solar inverters, including string ???



While high-efficiency panels may come at a slightly higher cost, they can be worth the investment, especially if your roof space is limited, as they allow you to generate more electricity in a smaller area. Roof Type and ???

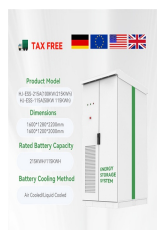


What is Solar Energy? Solar energy is a renewable and sustainable form of power derived from the radiant energy of the sun. This energy is harnessed through various technologies, primarily through photovoltaic cells and solar thermal systems. Photovoltaic cells commonly known as solar panels, convert sunlight directly into electricity by utilizing the ???



When it comes to determining "which type of solar panel is best," you need to consider efficiency, cost, power capacity, and lifespan. See also: Flexible Solar Panels (Problems + Solutions + Installation) Solar Panel Efficiency. Each type of solar panel offers different efficiency rates: See also: Portable Solar Panels Are Good (Here's Why)

WHAT KIND OF PHOTOVOLTAIC PANELS ARE SUITABLE FOR SUNROOMS



Components of Solar Collectors. The components of solar collectors encompass a range of elements, including absorbers, heat transfer fluids, and insulation materials, all of which collectively contribute to the efficient harnessing and utilization of solar energy within residential environments.. Absorbers, as the name implies, are the primary components responsible for ???



What are hybrid solar panels? A hybrid solar panel is a combination panel that can produce electricity and heat at the same time. They're also known as solar PV-T, or solar photovoltaic-thermal panels, meaning they take both energy and heat from the sun.. What that means for us, is that we can use one panel to generate electricity as well as heat and hot water.



Types of Solar Panel Mounting Structures Ground Mounted Solar Panel Structures: Harnessing Energy on Terra Firma. Ground-mounted solar panel mounting structures are a preferred choice for installations where ample land is available. These structures are anchored to the ground and can be installed at an optimal angle and orientation.



Another popular choice is the evacuated tube solar collector, which is more efficient in colder climates and can provide higher efficiency for heating and hot water.. Additionally, solar air collectors are used to heat air directly for space heating and can offer a cost-effective solution. Lastly, solar photovoltaic panels are used to generate electricity for residential use and can ???



Designed to optimize sun exposure, sun-tracking solar panel systems are a game changer in augmenting solar energy absorption. These dynamic installations, automated to follow the sun's trajectory, maximize sun-hour collection compared to fixed panels.