

WHAT LINES SHOULD BE INSTALLED UNDER THE PHOTOVOLTAIC PANELS



What type of conduit do you use for solar panels? While there are multiple types of conduit available, we typically use the following five in solar panel installation: The first four are made of galvanized steel or aluminum and have a matte-gray metallic finish. Ready to Go Solar?



Do solar panels need a junction box? Additionally, a junction box may be installed if your solar design includes points where multiple lines of conduit intersect or any transitions from outdoor to indoor conduit. While there are multiple types of conduit available, we typically use the following five in solar panel installation:



How does a utility verify a photovoltaic system? The utility will only permit the photovoltaic system to interact with the power grid after issuing a formal approval. The process through which a utility verifies a solar system's compliance with its technical and administrative requirements is commonly referred to as the interconnection process.



Do I need a ground wire for a PV panel? I See Electromagnetic Fields! Definitely run a ground wire so you can bond PV panel frames to chassis of inverter or charge controller. That protects against DC shock in case of a short at the array (including cracked panel and water).



How should a PV system be designed & installed? From the outset, the designer and installer of a PV system must consider the potential hazards carefully, and systematically devise methods to minimise the risks. This will include both mitigating potential hazards present during and after the installation phase.

WHAT LINES SHOULD BE INSTALLED UNDER THE PHOTOVOLTAIC PANELS



How do I choose a cable for a PV system? Cables should be sized such that overall voltage drop at stc between the array and the inverter is <3%. The cables used for wiring the d.c. section of a grid-connected PV system need to be selected to ensure that they can withstand the environmental, voltage and current conditions at which they may be expected to operate.



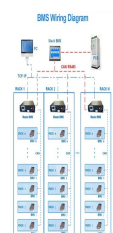
An installer's guide to solar panel installation. Ten years ago, solar panel installation was still fairly uncommon. The demand for solar ??? on both new-build and refurbishment projects ??? however, is huge and continues to ???



What should be the solar panel location on a building? The roof space will determine the available surface in which the property defines to locate the PV panels. It will be necessary to ensure that this ???



Determining the best route for the conduit and properly sealing the roof penetrations are crucial steps in your solar panel installation process. You'll need to weigh the pros and cons of running the conduit through the attic or on the ???



Comparison of Panel Types. When choosing a photovoltaic panel, it is essential to consider the efficiency, cost, and available space for installation. Monocrystalline panels are the most efficient but also the most expensive. ???

WHAT LINES SHOULD BE INSTALLED UNDER THE PHOTOVOLTAIC PANELS

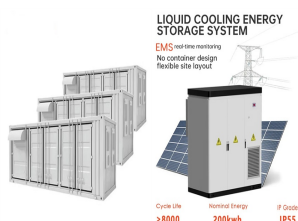
APPLICATION SCENARIOS



In recent years, solar panels have become more popular than ever before, with the UK seeing more than 17,000 new solar installations each month so far in 2023. This isn't surprising, given that solar panels can dramatically cut your ???



Meanwhile, a low-quality solar panel installed under harsh environmental conditions could have a degradation rate of 1% annually, reducing its output to just about 75% of its first-year output. This is a matter of concern since the backsheet of a PV module is the first line of defense that isolates and protects inner components from



This makes in-roof panels a particularly good fit for older homes whose roofs may struggle to support a large frame-mounted solar array, causing maintenance issues down the line. Low maintenance: The flush position of in-roof panels makes them more resistant to high winds, which can cause problems with solar panel frames. There are no visible



Solar modules are designed to produce energy for 25 years or more and help you cut energy bills to your homes and businesses. Despite the need for a long-lasting, reliable solar installation, we still see many solar panel brands continue to race to the bottom to compete on price. As some brands cut corners on product quality to remain price-competitive, solar panels ???



Step 9: Install The Junction Box: Your solar panel company should provide you with instructions on how to construct the junction box along with the list of fittings and other materials needed. Purchase the specific fittings listed along with the other various hardware like the grounding bar.

WHAT LINES SHOULD BE INSTALLED UNDER THE PHOTOVOLTAIC PANELS



Whether you are having a domestic or a commercial solar panel installation, it is important to understand the factors involved in finding the ideal location for your panels to get the most out of your system. The direction and position of your panels can have a remarkably large effect on their efficiency, so it's worth spending some time to get this right.



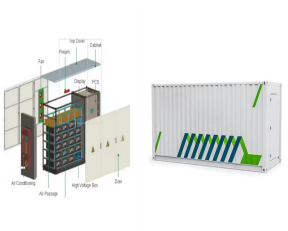
Solar installers and professionals must understand permitting and compliance policies when interconnecting a photovoltaic energy installation to the grid. This article provides insight into different types of physical interconnection methods ???



This means connecting your solar panel system to the grid, at which point the installation will be complete and the panels will fall under your control. If you choose Sunsaver Plus though, you'll be covered by the Sunsaver Guarantee, ???



This guidance is based on Zurich's Roof-Mounted Photovoltaic Panels Risk Insight, a longer guide which covers some of the technical aspects of PV panel safety in more detail. This guide is specifically aimed at small solar panel installations for community buildings. Additional controls and guidance may be needed for larger installations.



Solar panel systems produce a fair amount of heat, from the panels themselves and connected equipment like inverters, cables, and solar batteries. This heat must be ventilated properly ??? or simply given the opportunity to disperse ??? so none of these parts overheat.

WHAT LINES SHOULD BE INSTALLED UNDER THE PHOTOVOLTAIC PANELS



The height of the panels in relation to the ground makes it possible to classify the systems into two types : on one hand, there are overhead or stilted AV systems (S-AV), which are those where the PV panels are installed above the crop fields at a certain height (above 2.10 m); on the other hand, there are AVs where the PV panels are installed at a lower height, and ???



(Source: Electrical Technology) By combining parallel and series connections in a hybrid wiring configuration, you can address issues like shade and high voltage to maximize your electricity output and performance.. Hybrid connections are often the optimal choice for larger solar panel arrays. Typically, you'll work with a professional installer who will assess ???



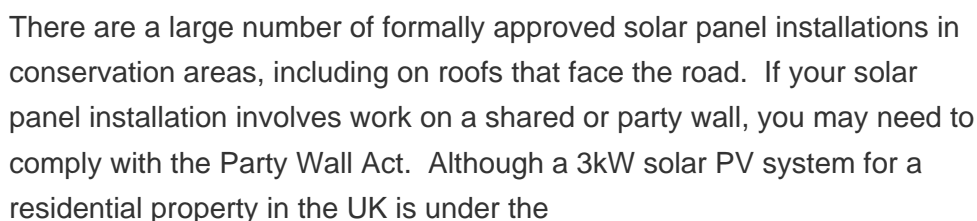
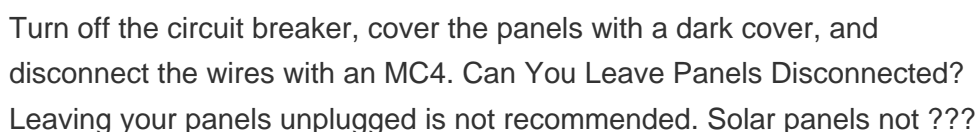
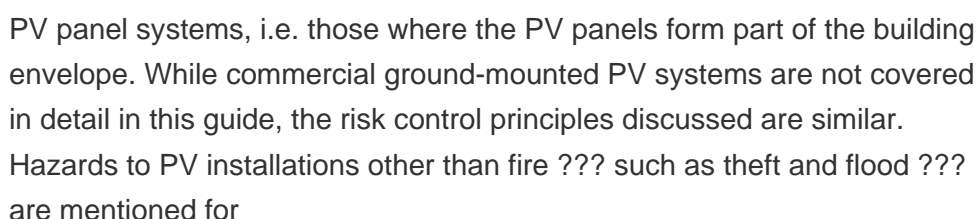
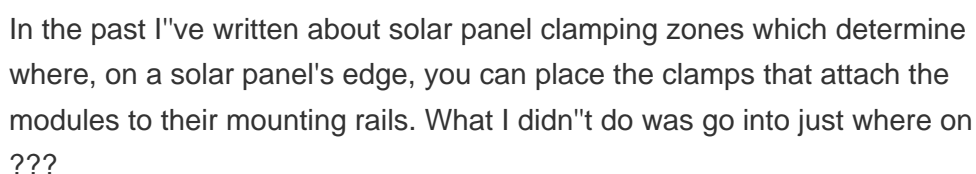
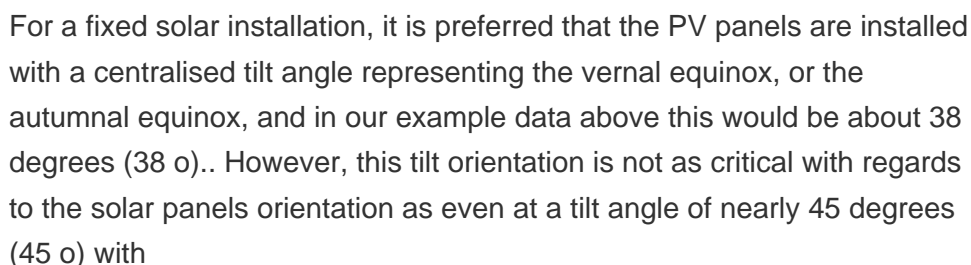
Solar panels are generally quite reliable. Many owners don't experience technical faults in over a decade of ownership. Nearly seven in 10 owners had had no problems with their solar panels in our survey of over 2,000 owners.* The most common ??? and most serious ??? problem owners face is with the



Photovoltaic (PV) systems are one of the most important renewable energy sources worldwide. Learning the basics of solar panel wiring is one of the most important tools in your repertoire of skills for safety and practical reasons, after all, residential PV installations feature voltages of up to 600V.



Solar Panels perform at optimum capacity when placed in direct sunlight. When you install your Solar Power system, try to position your photovoltaic panels directly under the noontime sun for maximum efficiency ???



WHAT LINES SHOULD BE INSTALLED UNDER THE PHOTOVOLTAIC PANELS



Solar panel building regulations. Solar panel installations have to pass standard building regulations for the property - it's a legal requirement for many home improvements.. The key areas are structural safety of a building (Part A) and electrical safety of a building (Part P). Your roof must be able to support the additional weight of rooftop panels and the electricals of the ???



The impact of direction on solar panel output. Your solar panel system's direction is one of the biggest factors in determining its output. This chart below uses an average of 26 arrays in Yorkshire that all have peak power ratings of 4kWp, and confirms that south-facing is the best direction.



Install the combiner box's support braces on the same horizontal plane to prevent long-term deformation. Use M17/304 stainless steel screws for secure wall-piece installation. Installation should facilitate easy door opening and closing for maintenance. Note: Moisture during installation can damage the combiner box.



Solar panels are usually made from silicon, or another semiconductor material, installed in a metal panel frame with a glass casing, all of which can be extracted, separated and recycled or reused. The remaining one ???



Read more: our guide to solar panel installation. 4. There isn't enough sun for solar panels. Although the UK is not famously sunny, we do have enough sunlight for solar panels to work effectively. Solar panels work during daylight, even when it's cloudy or overcast, as they use light6 not heat to generate energy. They don't need direct

WHAT LINES SHOULD BE INSTALLED UNDER THE PHOTOVOLTAIC PANELS



This could harm the electrical engineers fixing the lines if there's a power cut. Our brand new guide, A Consumer's Guide to Solar Panel Installation, provides you with all the information you need to make informed. We were helped all the way from quotation to the final installation by Stuart and Sean and at no time did we feel under



What's more, with photovoltaic panels on the roof, you can sell the electricity you produce, or consume it yourself. Savings: According to a study conducted by specialists in photovoltaic panel installation, a 4-person household equipped with photovoltaic panels would save an average of ???1,350 on an annual electricity bill of ???1,935.