

WHAT SIZE IS THE BEST FOR FIXING THE PHOTOVOLTAIC PANELS



Zoran's team then took over, starting with fixing the horizontal tile battens, which have a section size of 38mm x 25mm. Getting these perfectly into position is critical, as the gauge (distance between each batten) determines the final look of the roof.



Discover which solar panel sizes and dimensions are the most common in the UK, as well as which size is the best for your home. 0330 818 7480. Become a Partner. Menu. Solar Panels. Heat Pumps. Boilers. Windows. Doors



96-cell solar panel size. The dimensions of 96-cell solar panels are as follows: 41.5 inches long, and 63 inches wide. That's a 63x41.5 solar panel. This form is a bit shorter but wider. This is the typical classification of solar panel sizes ???



However, as a general guideline for solar panel installations in Pakistan, aiming for an azimuth angle of 180 degrees (south-facing) will typically yield the best results. Frequently Asked Questions (FAQs) About Tilt and Azimuth in ???

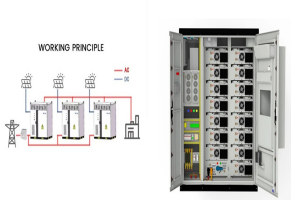


Furthermore, the decision on the most appropriate type of the solar panel mounting system will also affect the final cost of the project. The installation of the roof mounting may even imply modifications to your house structure that could increase upfront costs.

WHAT SIZE IS THE BEST FOR FIXING THE PHOTOVOLTAIC PANELS



Use our solar panel calculator to get an idea of what size system is right for you. Get quotes from at least three installers. Make sure the installers you look at are MCS-certified, which ensures they adhere to a strict code of conduct.



Mounting of Solar PV panels onto slate coverings require our slate roof fixing brackets. This is one of our roof PV fixing products that marry together to provide a high quality platform for solar panels. Solar PV slate mounting bracket. Slate ???



The easiest way for homeowners to figure out the best solar panel size for their needs is to work with a dedicated solar installer. Solar installers will size your system based on your energy needs, coupled with your available roof space ???



Roof Repair Costs; Conservatory Roof Replacement Costs; the size and complexity of the solar panel system, as well as any unexpected, dangerous weather conditions. The 12 best solar panel installers in the UK in 2024 We analysed 643 of the UK's top MCS-certified solar companies for this rundown of the best installers in the UK for 2024.



Solar panels are one of the most commonly fitted accessories to Caravans, Hybrids and Camper trailers today, and for good reason. Permanently mounted solar panels are a breeze for keeping your batteries topped up up and can allow you to run some pretty incredible 240V appliances in the middle of nowhere, if you have the right battery and inverter system.

WHAT SIZE IS THE BEST FOR FIXING THE PHOTOVOLTAIC PANELS



Solar PV systems are sized in technical units called kilowatts (kW) and a simple 2.4kW system would have about six to eight panels. Most small systems of this size do not need planning permission



Type of solar panel: Description: Average efficiency rating: Average lifespan: Pros: Cons: Monocrystalline. Black solar panel. Most efficient for domestic households. 18 - 24%. Most efficient commercially available panels. 25 - 40 years . Most efficient . Most expensive. Polycrystalline. Blue mosaic look. 13 - 16%. 25 - 30 years. Moderately



In the event of any other mishap, you should always hire a professional solar panel repair company. Small breakages can be fixed for ?80, while sweeping repairs could cost you up to ?1,500. Figure out how much electricity your household uses, as this will give you the best estimate for what size solar panel system meets your needs.



You should know that there are limitations for series solar panel wiring. In the U.S., solar strings are required to feature a maximum voltage of 600V, so solar arrays comply with article 690 section 7 of the National Electrical Code (NEC 690.7).



Whatever fixing method is used, you will need to dig a trench to bury the DC cable back to where the inverter is sited. Get more information about solar PV roof fixing systems at the Ecofirst website. Tracking systems Solar PV tracking systems move the PV panels to track the sun, and are claimed to produce up to 30 per cent more

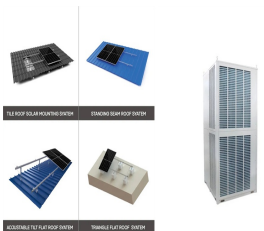
WHAT SIZE IS THE BEST FOR FIXING THE PHOTOVOLTAIC PANELS



There are two fundamental options for fixing a PV system to a flat roof, ballasted or mechanical. A ballasted system adds additional weight to anchor the array to the roof whereas mechanical installations cover two key methods, either they are fixed to the deck penetrating the roof covering or they do not and leave the waterproofing system intact.



Our guide talks you through the key points you need to consider when you're looking to choose the best solar panel for your motorhome. By William Grant Published: April 22, 2020 Size of panel required. Panels have a rating in watts, typically 5-200W, or higher. To estimate charge created, multiply this figure by the hours of daylight



As a general guide. On a sunny day, a 100W solar panel will produce approximately 4-5 amps per hour in full sun. This means that the solar panel would take around 18-25 hours to charge a fully discharged 100AH 12v battery. A solar panel half the size (50w) would take approximately double the amount of time to charge the same size battery.



Solar energy is increasingly gaining ground as a clean, efficient and cost-effective source of energy. And with the ever-increasing demand for the installation of photovoltaic systems, it becomes essential to be able to guarantee reliable and durable mounting of solar panels, to both simplify module anchoring and maximise energy production.. This is why Sun-Age, the leading ???



Solar panel labour costs; System size Price per watt Price per day Total cost (2-3 days) System cost + installation; 2kW: 20p: Repair: ?150 to ?350: May be covered under warranty: Monocrystalline solar panels are the best ???

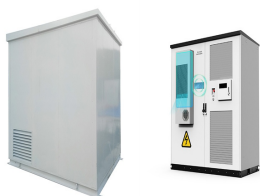
WHAT SIZE IS THE BEST FOR FIXING THE PHOTOVOLTAIC PANELS



By mounting the panels at an angle of at least 10 degrees, self-cleaning is possible. Thankfully, self-standing solar panels are usually fitted at 20 and 50-degree angles. As MCS accredited Solar Panel installers, the team here at Deege Solar will determine the best pitch for your panels at the point of consultation. All our consultations and



The fixings for solar panels have a very clear purpose: to support the photovoltaic panels by means of a firm and resistant anchorage capable of withstanding any environmental circumstance. They are a fundamental part in defining the orientation of the structures and all of them are manufactured with resistant materials (aluminium or steel with Atlantis C4-M coating) ???



Many solar panel companies make small solar panels designed specifically for small roofs. You can also opt for high-efficiency solar panels that have conversion rates as high as 23% (compared to the industry average of ???)



Once the solar panel is removed, you can now proceed to the next step. The next step is to identify the cause of the problem. The most common cause of a broken solar panel is cracked glass. If the glass on your ???



1. On-grid DIY solar panel kit: Plug-In Solar 340W DIY Solar Power Kit (from ?750) The kit contains one MCS-certified monocrystalline solar panel (1,690 x 1,005 x 35mm), plus an Enphase micro-inverter system, system isolator, roof mount kit, all cabling and connectors, plus instruction manual and warranties via email.

WHAT SIZE IS THE BEST FOR FIXING THE PHOTOVOLTAIC PANELS



The fixing system used to hold solar PV panels on your roof must be strong enough to support the weight of the panels in all weather conditions, including strong wind. They also need to be able to withstand a wide range of temperatures and



NEW! 410Wp Solar Panel. Larger than Marley's 335Wp panel, the new 410 Solar Photovoltaic Panel delivers a peak power of 410Wp to increase total power from a roof area, whilst allowing for the installation of fewer solar panels to achieve ???



By far the most common method for fixing Solar PV panels to a roof. Normally the lowest price it also gives the best performance as there is maximum ventilation, allowing the panels to keep cooler. weather proofing and energy supply. ???



Flat roofs such as precast concrete tiles and slabs are great for installing panels. The fixing system for these roofs compensates for the low slope existing on roofs with these characteristics to guarantee the best incidence of sunlight.. Fiber cement tiles, the famous "Eternit " tiles, are ubiquitous in commercial and residential establishments. . Here, the preponderant ???