

WHEN DOES THE ENERGY STORAGE MOTOR STORE ENERGY



How does an energy storage system work? An energy storage system consists of three main components: a control system, which manages the energy flow between the converter and the storage unit.



What are energy storage systems? Energy storage systems are devices capable of carrying out these transformations in an efficient and controlled way, allowing to better manage energy supply and demand nationwide. What is an energy storage system? An energy storage system is a device or set of devices that can store electrical energy and supply it when needed.



What are the components of an energy storage system? An energy storage system consists of three main components: a control system, which manages the energy flow between the converter and the storage unit. The operation of an energy storage system depends on the type of technology used, which can be chemical, electrochemical, mechanical, thermal, or electromagnetic in nature.



Why is storing energy important? Moreover, storing energy facilitates the use of renewable sources: by compensating for the variability and intermittency of energy production from sources such as solar and wind, it ensures greater penetration and less dependency on fossil fuels. Storing energy is key to supporting the transition to a renewables-based energy system.



What are the benefits of energy storage systems? Energy storage systems offer numerous benefits for the electricity system and end-users. First of all, they allow frequency and voltage to be adjusted, keeping the electricity grid parameters within the established limits and thus avoiding instability, overloads or blackouts.

WHEN DOES THE ENERGY STORAGE MOTOR STORE ENERGY



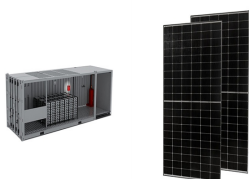
How do supercapacitors store energy? supercapacitors, which are electromagnetic systems that store energy in the form of an electric field. These devices accumulate electrical charge on two electrodes separated by a dielectric material, and can store and release energy very quickly and with a long duration. What are the benefits of energy storage systems?



Elevate your energy storage solutions with our cutting-edge generators, engineered to harness and store mechanical energy efficiently. Explore a new era of sustainable power with our ???



How Do Energy Storage Flywheels Work? Energy storage flywheels store energy in the form of kinetic energy through the use of a high-speed rotor with very low frictional losses. Using an integrated motor-generator, a small amount of ???



A flywheel is not a flying wheel, though if things go sideways, it's possible to find flywheels mid-air. Flywheels are devices used to store energy and release it after smoothing eventual oscillations received during the charging ???



The design will store energy as mechanical and as electrical energy. Mechanical energy will be stored as inertia in the mass of the spinning rotor. This inertial energy storage is very similar to ???

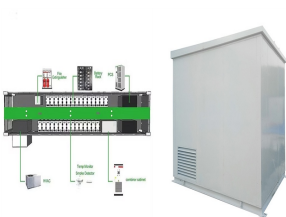
WHEN DOES THE ENERGY STORAGE MOTOR STORE ENERGY



Flywheels are among the oldest machines known to man, using momentum and rotation to store energy, deployed as far back as Neolithic times for tools such as spindles, potter's wheels and sharpening stones. Today, ???



An energy storage system consists of three main components: a power conversion system, which transforms electrical energy into another form of energy and vice versa; a storage unit, which stores the converted energy; a ???



There is a wide range of different technologies to store electrical energy. A widely-used approach for classifying such systems is the determination according to the form of ???



For a flywheel energy storage system, the energy it can store mainly depends on two things: the weight of the rotor and ; how fast it spins. The formula to figure out the energy stored in a flywheel is: $E_k = \frac{1}{2} I \omega^2$. I is the ???



For "many many rotations", a pneumatic motor can act as both a compressor and motor. Spinning the motor causes air to be forced through a tube, one-way valve, and storage tank. Opening the valve allows the ???

WHEN DOES THE ENERGY STORAGE MOTOR STORE ENERGY



Flywheel energy storage systems employ kinetic energy stored in a rotating mass to store energy with minimal frictional losses. An integrated motor ??? generator uses electric energy to propel the mass to speed. Using the same ???



Flywheel energy storage 1 consists in storing . kinetic energy. The energy of an object due to its motion. Go to definition. via the rotation of a heavy wheel or cylinder, which is usually set in motion by an electric motor, then ???



flywheel, heavy wheel attached to a rotating shaft so as to smooth out delivery of power from a motor to a machine. The inertia of the flywheel opposes and moderates fluctuations in the speed of the engine and stores the ???



Energy stores . There are 8 energy stores where energy can be "kept":
 ??? chemical store (in a chemical reaction e.g. fuel + oxygen) ??? kinetic store (in a moving object) ??? gravitational store (due to the position of an object in a gravitational ???