

# WHERE ARE THE ENERGY STORAGE PLANTS OPERATING



2MW / 5MWh  
Customizable

How much energy is stored in the world? Worldwide electricity storage operating capacity totals 159,000 MW, or about 6,400 MW if pumped hydro storage is excluded. The DOE data is current as of February 2020 (Sandia 2020). Pumped hydro makes up 152 GW or 96% of worldwide energy storage capacity operating today.



2MW / 5MWh  
Customizable

What is energy storage? Energy storage involves converting energy from forms that are difficult to store to more conveniently or economically storable forms. Some technologies provide short-term energy storage, while others can endure for much longer. Bulk energy storage is currently dominated by hydroelectric dams, both conventional as well as pumped.



2MW / 5MWh  
Customizable

What type of energy storage is available in the United States? In 2017, the United States generated 4 billion megawatt-hours (MWh) of electricity, but only had 431 MWh of electricity storage available. Pumped-storage hydropower (PSH) is by far the most popular form of energy storage in the United States, where it accounts for 95 percent of utility-scale energy storage.



2MW / 5MWh  
Customizable

What is the largest energy storage technology in the world? Pumped hydro makes up 152 GW or 96% of worldwide energy storage capacity operating today. Of the remaining 4% of capacity, the largest technology shares are molten salt (33%) and lithium-ion batteries (25%). Flywheels and Compressed Air Energy Storage also make up a large part of the market.



2MW / 5MWh  
Customizable

What is the current energy storage capacity of a pumped hydro power plant? The DOE data is current as of February 2020 (Sandia 2020). Pumped hydro makes up 152 GW or 96% of worldwide energy storage capacity operating today. Of the remaining 4% of capacity, the largest technology shares are molten salt (33%) and lithium-ion batteries (25%).

# WHERE ARE THE ENERGY STORAGE PLANTS OPERATING



What is the future of energy storage? Storage enables electricity systems to remain in balance despite variations in wind and solar availability, allowing for cost-effective deep decarbonization while maintaining reliability. The Future of Energy Storage report is an essential analysis of this key component in decarbonizing our energy infrastructure and combating climate change.



Pumped Hydro Energy Storage plants are a (PHES) particular type of hydropower plants which allow not only to produce electric energy but also to store remains more flexible with an operating range of the variable-speed technology from 70% to full pumping capacity.



Plus Power's Kapolei Energy Storage plant balances Oahu's power grid, enabling more renewable energy in Hawaii.. THE WOODLANDS, Texas, Jan. 11, 2024 /PRNewswire/ -- Plus Power ??? announced it has



Storage capacity is the amount of energy extracted from an energy storage device or system; usually measured in joules or kilowatt-hours and their multiples, it may be given in number of hours of electricity production at power plant nameplate capacity; when storage is of primary type (i.e., thermal or pumped-water), output is sourced only with

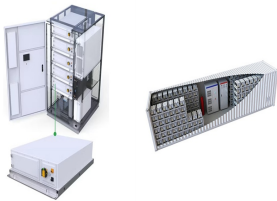


Energy storage involves converting energy from forms that are difficult to store to more conveniently or economically storable forms. Some technologies provide short-term energy storage, while others can endure for much longer. Bulk ???

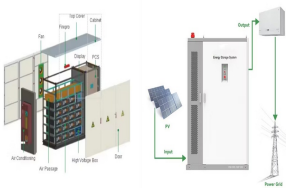
# WHERE ARE THE ENERGY STORAGE PLANTS OPERATING



energy (pumping mode). The round trip energy efficiency of UPSH plants (the energy fed into the electrical grid divided by the energy taken from the electrical grid in pumping mode), is in the 70???80% range [33,34]. The amount of storable energy depends on the water mass and net head between upper and lower reservoir [35].



The increasing penetration of variable renewable energies (VRE) in the European electricity mix requires flexible energy storage systems (ESS), such as pumped storage hydropower (PSH). Disused mining voids from deep closed mines may be used as subsurface reservoirs of underground pumped-storage hydropower (UPSH) plants. Unlike conventional ???



"Energy storage technology that responds quickly to constantly changing conditions is an essential tool for us to use to manage the grid and operate it as efficiently as possible." Benefits of storage. The new battery storage system is intended to help facilitate Oahu's adoption of more renewable, but intermittent, energy supplies.



The essential components of a compressed air energy storage plant are illustrated as well in Figure 1. The 2002 EPRI study identifies the following rule of thumb for a generic CAES plant: The operating cost per kWh delivered during power generation mode is 0.75 times that of the incremental cost per kWh of off-peak power purchased during



As of the end of 2023, there was roughly as much storage capacity operating within PV+storage hybrid plants as in standalone storage plants (~7.5 GW each). In storage energy terms, however, PV+storage edged out standalone storage by ~7 GWh (24.2 GWh vs. 17.5 GWh, respectively).

# WHERE ARE THE ENERGY STORAGE PLANTS OPERATING



3.7se of Energy Storage Systems for Peak Shaving U 32 3.8se of Energy Storage Systems for Load Leveling U 33 3.9ogrid on Jeju Island, Republic of Korea Micr 34 4.1rice Outlook for Various Energy Storage Systems and Technologies P 35 4.2 Magnified Photos of Fires in Cells, Cell Strings, Modules, and Energy Storage Systems 40



As an important part of virtual power plant, high investment cost of energy storage system is the main obstacle limiting its commercial development [20].The shared energy storage system aggregates energy storage facilities based on the sharing economy business model, and is uniformly dispatched by the shared energy storage operator, so that users can use the shared ???



Thermal energy storage (TES) is a technology that stocks thermal energy by heating or cooling a storage medium so that the stored energy can be used at a later time for heating and cooling applications and power generation. TES systems are used particularly in buildings and in industrial processes. This paper is focused on TES technologies that provide a way of ???



As of the end of 2022, there was roughly as much storage capacity operating within PV+storage hybrid plants as in standalone storage plants (~4 GW each). In storage energy terms, however, PV+storage edged out standalone storage by ~2 GWh (12.5 GWh vs. 10.4 GWh, respectively).

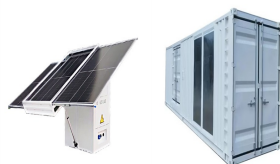


With the increase of peak-valley difference in China's power grid and the increase of the proportion of new energy access, the role of energy storage plants with the function of "peak-shaving and valley-filling" is becoming more and more important in the power system. In this paper, we propose a model to evaluate the cost per kWh and revenue per kWh of energy ???

# WHERE ARE THE ENERGY STORAGE PLANTS OPERATING



Simulation of plant operating characteristics under different capacity configuration strategies. Combined with the actual engineering situation, the unit capacity of a gravity energy storage power plant is generally not less than 100 kW level. Hence, the minimum unit in the following analysis uses a 100 kW unit, i.e., the units of power



CAES, a long-duration energy storage technology, is a key technology that can eliminate the intermittence and fluctuation in renewable energy systems used for generating electric power, which is expected to accelerate renewable energy penetration [7], [11], [12], [13], [14]. The concept of CAES is derived from the gas-turbine cycle, in which the compressor ???



The widespread diffusion of renewable energy sources calls for the development of high-capacity energy storage systems as the A-CAES (Adiabatic Compressed Air Energy Storage) systems. In this framework, low temperature (100°C???200°C) A-CAES (LT-ACAES) systems can assume a key role, avoiding some critical issues connected to the operation of ???



With the majority of the world's energy demand still reliant on fossil fuels, particularly coal, mitigating the substantial carbon dioxide (CO<sub>2</sub>) emissions from coal-fired power plants is imperative for achieving a net-zero carbon future. Energy storage technologies offer a viable solution to provide better flexibility against load fluctuations and reduce the carbon ???



As of the end of 2022, there was roughly as much storage capacity operating within PV+storage hybrid plants as in standalone storage plants (~4 GW each). In storage energy terms, however, PV+storage edged out standalone storage by ~2 GWh (12.5 GWh vs. 10.4 GWh, respectively).

# WHERE ARE THE ENERGY STORAGE PLANTS OPERATING

## Commercial and Industrial ESS

- Budget-Friendly Solution
- Renewable Energy Integration
- Minimal Design for Flexible Expansion



Tehachapi Energy Storage Project, Tehachapi, California. A battery energy storage system (BESS) or battery storage power station is a type of energy storage technology that uses a group of batteries to store electrical energy. Battery storage is the fastest responding dispatchable source of power on electric grids, and it is used to stabilise those grids, as battery storage can ???



Furthermore, the intermittency in power generation can be addressed by integrating a thermal energy storage (TES) system in the CSP plant [8, 11]. A TES system uses a storage material to stock excess heat from the solar receiver during the day when solar energy is abundant, which can then be used during periods of low solar radiation for continuous power ???



Operating Plants Beacon Power operates three flywheel energy storage plants that provide frequency regulation service in three different US markets. There are more than 400 flywheels in commercial operation today helping grid operators in NYISO, PJM and ISO-NE safely and efficiently balance power grid supply and demand to ensure reliability.



The energy system in the EU requires today as well as towards 2030 to 2050 significant amounts of thermal power plants in combination with the continuously increasing share of Renewables Energy Sources (RES) to assure the grid stability and to secure electricity supply as well as to provide heat. The operation of the conventional fleet should be harmonised with ???



This is the favoured operating mode for most geothermal power plants today because these plants tend to be peaker plants. Battery energy storage helps balance diurnal variability in wind and



# WHERE ARE THE ENERGY STORAGE PLANTS OPERATING



Phase 1 of Moss Landing Energy Storage Facility was connected to the power grid and began operating on 11 December 2020, at the site of Moss Landing Power Plant, a natural gas power station owned by Vistra since it acquired the facility's previous owner, Dynegy in 2018. The BESS is housed inside the gas power plants turbine buildings



Modular-gravity energy storage (M-GES) plant control system is proposed for the first time. As the plant's SOC is close to the operating limit (fully discharged, as shown in Fig. 10), the operating cycle of the unit is gradually reduced. Since the unit reset time remains the same, the dead zone duration remains the same, and the unit cycle



Globally, communities are converting to renewable energy because of the negative effects of fossil fuels. In 2020, renewable energy sources provided about 29% of the world's primary energy. However, the intermittent nature of renewable power, calls for substantial energy storage. Pumped storage hydropower is the most dependable and widely used option ???



DOI: 10.1016/J.RSER.2019.01.062 Corpus ID: 115751592; Sensible energy storage options for concentrating solar power plants operating above 600 °C @article{Mohan2019SensibleES, title={Sensible energy storage options for concentrating solar power plants operating above 600 °C}, author={Gowtham Mohan and Mahesh B. Venkataraman and Joe Coventry}, ???



To lower the cost of electricity produced, advanced high-efficiency power cycles operating at temperatures above 600 °C (such as the supercritical CO<sub>2</sub> Brayton cycle) are presently being developed for use in both nuclear and concentrating solar power (CSP) plants. Incorporating thermal energy storage into CSP plants allows renewable energy to be ???

# WHERE ARE THE ENERGY STORAGE PLANTS OPERATING

---



Compressed Air Energy Storage: Compressed air energy storage pumps and compresses air in underground containment areas. The air is held until power is needed, then released through a combustion turbine with natural gas fuel. There are two such plants operating in the United States ??? both outside of the PJM region. ??? Electric Vehicles



Electrical Energy Storage (EES) refers to systems that store electricity in a form that can be converted back into electrical energy when needed. 1 Batteries are one of the most common forms of electrical energy storage. The first battery???called Volta's cell???was developed in 1800. 2 The first U.S. large-scale energy storage facility was the Rocky River Pumped Storage plant in ???