

WHERE IS IT BETTER TO INSTALL PHOTOVOLTAIC PANELS



How do I choose a solar panel system? Expert tips on how to choose, buy and install the best type of solar panel system Understand the difference between solar water heating and solar photovoltaics Watch our solar PV installation video to see what's involved when buying In this guide (8 articles) How much do solar panels cost? Solar panel battery storage Buying advice for solar panels



Where should solar panels be installed? To maximise the output of solar panels, you will want to have them installed on a south-facing section of your roof. South-facing solar panels in the UK receive the most sunlight exposure, as the sun is in the sky the most in this direction.



Where should solar panels be installed in the UK? For homes in the UK, the optimal roof location for solar panels is south-facing. A south-facing roof receives maximum sunlight over the course of a day, especially in the northern parts of the UK.



What is the optimal tilt angle of photovoltaic solar panels? The optimal tilt angle of photovoltaic solar panels is that the surface of the solar panel faces the Sun perpendicularly. However, the angle of incidence of solar radiation varies during the day and during different times of the year.



Do solar panels need a 49-degree tilt? Your solar panels need a 49-degree tilt. If you're still learning about solar, refer to our complete advice section for more help and advice, which includes guides on the best solar panels, costs of installing solar and if solar is worth it.

WHERE IS IT BETTER TO INSTALL PHOTOVOLTAIC PANELS



Why should you choose the right solar panel angle based on location? Having the right solar panel angle and orientation based on your location in the UK is essential if you want to maximise solar panel efficiency and power output. This has implications for your energy consumption, as well as for your savings, which can reach up to ?1,005 per year, depending on the size of your system.



Solar PV panels have only 15 to 20% efficiency. Because of that, you'll need more of this type of panel to absorb and convert solar energy. These panels consist of solar cells with two layers of semi-conducting material and silicon. When a photovoltaic cell is hit by sunlight, they create an electric field through the photovoltaic effect.



Horizontal v Vertical Solar Panel Inverters. If your solar panel contractor advises you that horizontal solar panels are the best choice for your solar needs, you do not need a special inverter. Solar panel inverters work the ???



The one key difference between an in-roof solar panel and a traditional on-roof solar panel is usually weight, with in-roof panels being about half as heavy (around 10kg instead of 20kg). It's better to install integrated ???



Campervan solar panel installation: a guide to fitting rigid or flexible solar panels to your campervan. These are much better made and provide a much better seal, decreasing your risk of leaks when running your solar cables into your van. We would therefore recommend that you use a Scanstrut cable seal. The Scanstrut cable seal linked

WHERE IS IT BETTER TO INSTALL PHOTOVOLTAIC PANELS



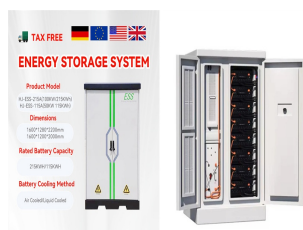
Horizontal solar panel installations are usually cheaper compared to vertical solar panel installations. Mounting solar panels on walls and vertical surfaces can be expensive as you must pay for additional support equipment. Vertical bifacial solar panel systems are considerably more expensive.



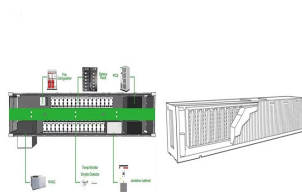
Read more: our guide to solar panel installation. 4. There isn't enough sun for solar panels. Although the UK is not famously sunny, we do have enough sunlight for solar panels to work effectively. Solar panels work during daylight, even when it's cloudy or overcast, as they use light not heat to generate energy. They don't need direct



If even one panel is shaded it will reduce the output of all your panels unless you invest in micro-inverters or other optimizing devices. Solar Panel Orientation and Elevation: So we've established that there's a sweet spot for your solar panel orientation which is directly south and a sweet spot for elevation which is between 30° and 40°.



3. Make space for the solar panel accessories (solar inverter, cables and solar batteries, if desired), for instance in a plant room. 4. Plan a day for installation. 5. Erect the scaffolding (this can be done by your supplier or by a company you organise) 6. The solar panel mounts will be installed. 7. The professionals will install the solar



The cost of solar panel optimisers in the UK can vary widely, primarily depending on the brand, type, and the number of panels in your array. In the table above, we've looked at the average number of panels needed for a typical household size.. As a rough estimate, you might expect to pay around £40 per DC optimiser, including installation if it's ???

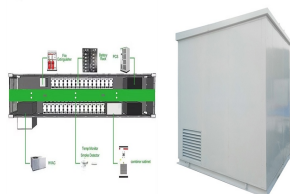
WHERE IS IT BETTER TO INSTALL PHOTOVOLTAIC PANELS



In fact, the average residential solar panel system in the UK saves 0.7 tonnes of carbon dioxide each year. the more panels you'll need to install. So, the bigger the roof, the better. If you find yourself running out of room, you can opt for premium, high-efficiency models. Although more expensive, a small number of high-efficiency



A typical solar panel weighs around 40 pounds and puts 3-4 pounds per square foot of weight on the roof. While you might think solar shingles are heavier, remember, shingles essentially are the roof.



What is Solar Panel Mounting and Racking? Mounting solar panels refers to the process of installing solar energy systems onto a structure such as a building or ground mount. The procedure usually involves securing ???



North-facing solar panels aren't usually worth installing. On the other hand, panels that point towards the north-east or north-west can form a worthwhile part of a wider solar panel system. This all means that a huge ???



Photovoltaic (PV) systems are one of the most important renewable energy sources worldwide. Learning the basics of solar panel wiring is one of the most important tools in your repertoire of skills for safety and practical reasons, after all, residential PV installations feature voltages of up to 600V.

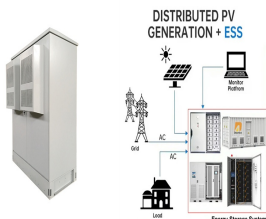
WHERE IS IT BETTER TO INSTALL PHOTOVOLTAIC PANELS



Every solar panel typically comes with a female and a male MC4 connector. Usually, the female MC4 connector stands for the negative terminal, and the male MC4 connector represents the positive terminal of the solar panel. In general, it is better to use multiple solar panels wired in parallel, and place them in a way that if it's partial



When installing solar panels, companies will take multiple factors into account, from the position of trees in your yard to the pitch of your roof, in order to maximize efficiency and stability.



How to Install Bifacial Solar Panels. Installing bifacial solar panels is a smart way to boost your energy efficiency. Here's a concise five-step guide to help you get started: 1. Site Assessment and Planning. Begin by evaluating your site to identify the optimal location for your bifacial solar panels.

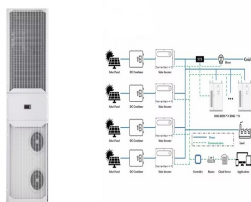


Investing in Battery Technology Advancements and Solar Panel Innovations. As technology advances, battery technology and solar panel innovations are constantly improving. Investing in the latest advancements ???



Framed bifacial solar panels are much easier to install than a frameless one, The more a bifacial solar panel is tilted, the more energy it delivers. The active surface on the rear side means that bifacial solar panels perform better in diffuse light, such as the overcast weather. This makes them more cost-effective in the long term

WHERE IS IT BETTER TO INSTALL PHOTOVOLTAIC PANELS



A wind turbine is a rotating machine that converts the wind kinetic energy of the wind into electrical power, making it wind power and energy. Wind turbines are manufactured in a wide range of vertical and horizontal ???



Whether you are having a domestic or a commercial solar panel installation, it is important to understand the factors involved in finding the ideal location for your panels to get the most out of your system. The direction and ???



Our essential solar panel guide, including types of solar pv panels, how much electricity you can expect to generate and tips from experienced owners Find out more about solar panel installation. But they can be affected by the heat, so if your loft tends to get very hot in summer, a garage might be a better bet, if you have one. Beware



South-facing solar panels will perform the best for a vast majority of homeowners. If you do not have a south-facing roof ??? don't worry! Your solar panels will still be able to produce energy, just not as much.. In this article, we'll discuss the best solar panel direction to maximize your output, and how having your solar panels facing any other direction can affect your panel's



Ensuring the right orientation during the installation of your rooftop solar is crucial, but the angle also plays a large part in order to get the maximum out of your residential solar. Choosing the most optimal angle ensures that the panels will ???

WHERE IS IT BETTER TO INSTALL PHOTOVOLTAIC PANELS



Currently, there are two primary types of flexible solar panels available on the market. The first kind of flexible solar panel is a thin-film solar panel that contains photovoltaic material printed directly onto a flexible ???



Installation: The physical installation of your solar panel system can vary in complexity, but it generally involves mounting the panels on your roof, installing an inverter, and setting up the connection to your home's electrical system. Skilled technicians ensure everything is properly installed and secured to withstand weather conditions.



Find answers to all your important questions about solar panel and battery installation. Learn about costs, benefits, and more with OVO. Make the switch to solar energy confidently. . 1 So rooftop solar panels are a better option than ever before as a renewable energy solution in the UK. Interested in solar? Get solar panels and a battery



How to install solar panels wiring . Solar panel wiring installation is not overly complicated if you understand basic electricity procedures. First, there is a positive wire and a grounding wire. Most solar components have a port for a positive wire and a grounding wire. Next, you would use a ferrule to attach the wires to the components



DIY Solar Panel Installation is a great way to produce renewable energy and lower your energy bills. Read our guide on how to install solar panels yourself. We designed our solar panel kits specifically for DIY solar panel installation projects. And what better project than providing energy security for your family or business?