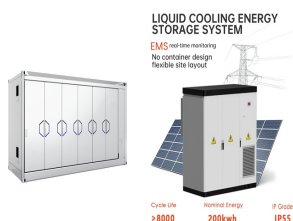
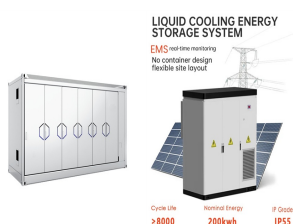


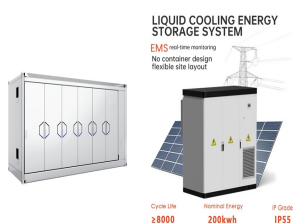
WHERE IS THE ADDRESS OF CAOPING PUMPED STORAGE POWER STATION



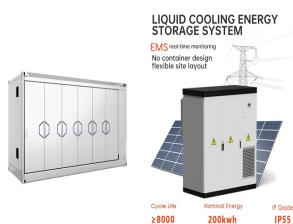
What is pumped storage power station (PSPS)? The pumped storage power station (PSPS) is a special power source that has flexible operation modes and multiple functions. With the rapid economic development in China, the energy demand and the peak-valley load difference of the power grid are continuing to increase.



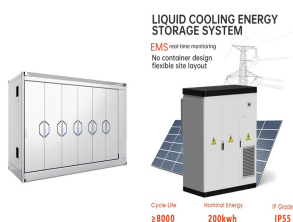
Will pumped storage power station improve the power grid in North China? WANG LIQUN/XINHUA With the operation of a large-scale pumped storage power station, the power grid in North China will become more stable and efficient. The station ??? akin to a power bank ??? can store significant amounts of electrical energy and supply power during peak consumption periods, experts said.



What is a pumped-storage power station? Pumped-storage power stations use off-peak electricity to pump water to higher locations, where it is stored and then released to generate electricity when the power supply is strained. They can complement wind and solar power generation, which brings bigger fluctuations to the grid.

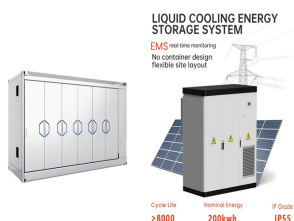


Why is pumped storage power station important? "The construction of pumped storage power stations further expands the development space for renewable energy, which is of great significance for accelerating the establishment of a new type of power system and energy system in Hebei," Men said. zhangyu1@chinadaily.com.cn

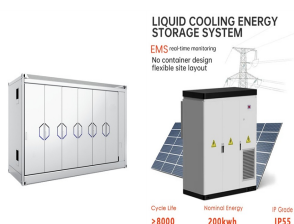


Does pumped storage power maintain grid stability? Many countries configured a certain proportion of pumped storage power in the network to keep their grid stability. This paper introduces the current development status of the pumped storage power (PSP) station in some different countries based on their own economic demands and network characteristics.

WHERE IS THE ADDRESS OF CAOPING PUMPED STORAGE POWER STATION



How much does China's pumped-storage power project cost? With an expected investment of 15.1 billion yuan (2.11 billion U.S. dollars), it is expected to be the pumped-storage power project with the largest installed capacity in Sichuan, and the world's highest-altitude mega pumped-storage power station, the company said.



The construction of pumped storage power stations using abandoned mines not only utilizes underground space with no mining value (reduced cost and construction period), but also improves the peak



Introduction. Pumped storage power plants are a type of hydroelectric power plant; they are classified as a form of renewable (green) power generation.. Pumped storage plants convert potential energy to electrical energy, or, ???



Driven by China's long-term energy transition strategies, the construction of large-scale clean energy power stations, such as wind, solar, and hydropower, is advancing rapidly. Consequently, as a green, low-carbon, and ???



Upon completion, the Daofu pumped-storage power station will feature a total designed installed capacity of 2.1 million kilowatts, generating over 2.99 billion kilowatt-hours ???

WHERE IS THE ADDRESS OF CAOPING PUMPED STORAGE POWER STATION



Located in Fengning Man autonomous county, Chengde, the station serves as a vital conduit for green electricity from North China and Northeast China to Beijing. Beyond this project, a group of pumped storage energy ???



The current Foyers Power Station operates quite differently to conventional hydro electric power stations. Foyers hydro scheme consists of one pumped hydro power station and one hydro power station and one major dam. What makes ???



Caoping Pumped Storage Power Station is the first approved pumped storage project in the "14th Five-Year Plan" in Shaanxi Province. Energy development planning, Shaanxi province pumped storage medium and long ???



Energy efficiency reflects the energy-saving level of the Pumped Storage Power Station. In this paper, the energy flow of pumped storage power stations is analyzed firstly, and then the ???



The hydraulic vibration of pumped storage power station (PSPS) is a kind of special unsteady flow phenomenon in the pressurized pipeline system, which is different from the ???