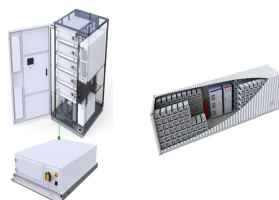


WHERE IS THE ENERGY STORAGE BUILDING AT NO 39 GUIMIAO ROAD



Goodman Interlink is a 24-storey grade A Logistics Centre located in 39 Tsing Yi Road. Its total GFA is approximately 3,301,000 sq.ft.. To comply with the sustainable green practices in improving energy efficiency and ???



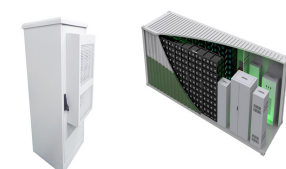
China leading provider of Cold Chain Dedicated PCM and Energy Storage Buildings PCM, Sichuan Aishipaier New Material Technology Co., Ltd. is Energy Storage Buildings PCM factory. Electromechanical New Materials Industrial ???



CNEnergy was founded in September 2016 and is located on the 1& 4 floor of Building 3, Caohejing (Zhongshan) Science and Technology Park, No. 68, Zhongchuang Road, Songjiang District, Shanghai. The core personnel of the ???



Hunan Corun New Energy Co Ltd is a China-based company engaged in the manufacture and sale of energy storage materials, batteries, electric vehicle battery power pack and its extension products. Its key ???



Shanghai SineSunEnergy Co.,Ltd has been focusing on lithium battery product development and application, providing leading lithium battery energy storage system integrated solutions since ???

WHERE IS THE ENERGY STORAGE BUILDING AT NO 39 GUIMIAO ROAD



2MW / 5MWh
Customizable



The project will allow Fangchenggang to bring its advanced energy storage materials, equipment, and technology from the Fangchenggang Economic Development Zone to the rest of the country and the world. The ???



The Company has two major production bases: Nantong base, equipped with large-scale lithium-ion battery energy storage systems, is the most advanced industrial base integrating R& D, ???



US carmaker Tesla's Shanghai energy storage Megafactory has begun trial production, serving as a good example of cooperation between China and the United States to address climate challenges. The new plant is ???



Bluesun Solar Co., Ltd was founded in 2013, is one of the solar power solution leading companies in China, with an office area of 3000 square meters and a peripheral warehouse area of 2000 square meters, focuses on the research ???