

WHICH IS THE BEST INDUSTRIAL ENERGY STORAGE LITHIUM BATTERY



Lithium-ion battery storage continued to be the most widely used, making up the majority of all new capacity installed. Annual grid-scale battery storage additions, 2017-2022 Global investment in battery energy storage exceeded USD 20 billion in 2022, predominantly in grid-scale deployment, which represented more than 65% of total spending



BSLBATT offers a broad portfolio of products for residential, commercial, and industrial energy storage, from 5 kWh ??? 100 kWh, low voltage to high voltage, grid-connected or off-grid, our Lithium-ion solar battery products and solutions are recognized for best-in-class performance, functionality, and reliability.



Residential energy storage systems, industrial fields, commercial applications: Energy Storage Solutions, Lithium-Ion Phosphate Batteries: Foundation Year: 2001: A123 Systems LLC, a leading provider of ???



By understanding the impact of battery age and time, you can make informed decisions when purchasing and using lithium-ion batteries following best practices, you can maximize the performance and lifespan of your batteries. Charging Cycles. When it comes to maintaining the longevity of your lithium-ion battery, understanding charging cycles is essential.



As a proven and expert lithium battery manufacturer, we have partnered with Power Solutions Distributors since 2008 to provide comprehensive and efficient power solutions for businesses of all sizes, such as data centers, utilities/petrochemical, telecommunications, microgrid energy storage, and other business solutions (e.g., healthcare, finance, education, ???

WHICH IS THE BEST INDUSTRIAL ENERGY STORAGE LITHIUM BATTERY



From backup power to bill savings, home energy storage can deliver various benefits for homeowners with and without solar systems. And while new battery brands and models are hitting the market at a furious pace, the best solar batteries are the ones that empower you to achieve your specific energy goals. In this article, we'll identify the best solar batteries in ???



The first rechargeable lithium battery was designed by Whittingham (Exxon) and consisted of a lithium-metal anode, a titanium disulphide (TiS_2) cathode (used to store Li-ions), and an electrolyte composed of a lithium salt dissolved in an organic solvent. 55 Studies of the Li-ion storage mechanism (intercalation) revealed the process was highly reversible due to ???



Solar batteries, a key component in industrial battery storage, are large energy storage units typically found outside a building that charge up during sunny periods if linked up to a solar PV system, Lithium-ion batteries are often the ???



Sodium-ion is one technology to watch. To be sure, sodium-ion batteries are still behind lithium-ion batteries in some important respects. Sodium-ion batteries have lower cycle life (2,000???4,000 versus 4,000???8,000 for lithium) and lower energy density (120???160 watt-hours per kilogram versus 170???190 watt-hours per kilogram for LFP).



CATL is a global leader in energy technology and one of China TOP 10 energy storage system integrator, focusing on lithium-ion batteries for electric vehicles and energy storage. In 2023, CATL was the world's largest EV battery ???

WHICH IS THE BEST INDUSTRIAL ENERGY STORAGE LITHIUM BATTERY



Energy storage systems allow energy consumption to be separated in time from the production of energy, whether it be electrical or thermal energy. The storing of electricity typically occurs in chemical (e.g., lead acid batteries or lithium-ion batteries, to name just two of the best known) or mechanical means (e.g., pumped hydro storage).



Battery energy storage systems (BESS) are devices or groups of devices that enable energy Lithium-ion battery use and storage. Energy & Industrial Strategy. Fire Protection Association London Road Moreton in Marsh Gloucestershire GL56 0RH T: +44 (0)1608 812500 E: info@riscauthority .uk W:



A battery energy storage system (BESS) is an electrochemical device that charges (or collects energy) from globally is dominated by lithium-ion chemistries (Figure 1). Due to tech- has important implications for the services the system can best provide, and the most appropriate location for the BESS will depend on its



In the electrical energy transformation process, the grid-level energy storage system plays an essential role in balancing power generation and utilization. Batteries have considerable potential for application to grid-level energy storage systems because of their rapid response, modularization, and flexible installation. Among several battery technologies, lithium ???



A battery energy storage solution offers new application flexibility and unlocks new business value across the energy value chain, from conventional power generation, transmission & distribution, and renewable power, to industrial and ???

WHICH IS THE BEST INDUSTRIAL ENERGY STORAGE LITHIUM BATTERY



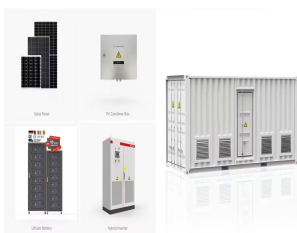
Custom Power designs and manufactures high power custom lithium battery packs, energy storage systems and portable power solutions for critical applications. Power is a specialist supplier of custom built lithium battery packs, COTS battery modules, portable power and energy storage systems for industrial, energy, autonomous and defence



Battery energy storage systems (BESS) are devices or groups of devices that enable energy Lithium-ion battery use and storage. Energy & Industrial Strategy. Fire Protection Association London Road Moreton in Marsh Gloucestershire GL56 0RH T: +44 (0)1608 812500 E: info@riscauthority .uk W:



In this article, we'll explore whether lithium-ion batteries are indeed the best choice for industrial energy storage. Lithium-Ion Batteries: A Closer Look Understanding Lithium-Ion Technology: Lithium-ion batteries are rechargeable energy storage devices that utilize lithium ions to store and release electrical energy.



BigBattery off-grid lithium battery banks are made from top-tier LiFePO4 cells for maximum energy efficiency. Our solar line-up includes the most affordable price per kWh in energy storage solutions. Lithium batteries can also store about 50% more energy than lead-acid batteries! Power your off-grid dream with BigBattery today!



By definition, a Battery Energy Storage Systems (BESS) is a type of energy storage solution, a collection of large batteries within a container, that can store and discharge electrical energy upon request. The system serves as a buffer ???

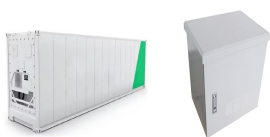
WHICH IS THE BEST INDUSTRIAL ENERGY STORAGE LITHIUM BATTERY



A battery energy storage system (BESS) captures energy from renewable and non-renewable sources and stores it in rechargeable batteries (storage devices) for later use. A battery is a Direct Current (DC) device and when needed, the ???



A 100kWh battery, short for a 100-kilowatt-hour battery, is a high-capacity energy storage device or a rechargeable battery that can store and deliver 100 kilowatt-hours (kWh) of energy. A kilowatt-hour (kWh) is the standard unit used to measure the amount of energy a device uses or produces in a single hour in energy quantification.



In the 1980s, John Goodenough discovered that a specific class of materials???metal oxides???exhibit a unique layered structure with channels suitable to transport and store lithium at high potential. It turns out, energy can be stored and released by taking out and putting back lithium ions in these materials. Around the same time, researchers also ???



One of the best industrial storage batteries is the lithium-ion battery due to its several benefits over its competitors. The lithium-ion battery is able to store a large amount of energy despite its compact size and lightweight due to its high energy density. Best industrial energy storage systems ??? Grevault. Another notable feature of



2 ? Silicon and lithium-ion batteries differ significantly in their construction, performance, and potential applications. Silicon anodes offer higher energy density and capacity compared to traditional lithium-ion batteries that utilize graphite. However, challenges like volume expansion during charging impact their practicality. Understanding these differences is crucial for ???

WHICH IS THE BEST INDUSTRIAL ENERGY STORAGE LITHIUM BATTERY



When you use Lithium Iron Phosphate (LiFePO₄) batteries from Super B as part of your solar energy system, you certainly know you go for the best. Super B batteries are the ultimate clean energy, delivering highly-efficient, ultra-long life power you can rely on in ???