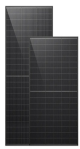
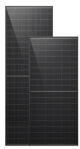


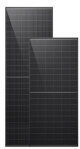
WHY CAN FLYWHEEL ENERGY STORAGE STORE ENERGY



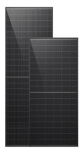
How does a flywheel energy storage system work? Flywheel energy storage uses electric motors to drive the flywheel to rotate at a high speed so that the electrical power is transformed into mechanical power and stored, and when necessary, flywheels drive generators to generate power. The flywheel system operates in the high vacuum environment.



Could flywheels be the future of energy storage? Flywheels, one of the earliest forms of energy storage, could play a significant role in the transformation of the electrical power system into one that is fully sustainable yet low cost.



How long does a flywheel energy storage system last? Flywheel energy storage systems have a long working life if periodically maintained (>25 years). The cycle numbers of flywheel energy storage systems are very high (>100,000). In addition, this storage technology is not affected by weather and climatic conditions. One of the most important issues of flywheel energy storage systems is safety.

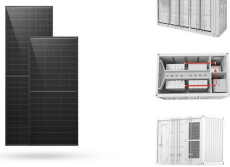


What are the advantages of a flywheel versus a conventional energy storage system? When the flywheel is weighed up against conventional energy storage systems, it has many advantages, which include high power, availability of output directly in mechanical form, fewer environmental problems, and higher efficiency.

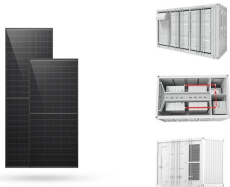


Where is flywheel energy storage located? It is generally located underground to eliminate this problem. Flywheel energy storage uses electric motors to drive the flywheel to rotate at a high speed so that the electrical power is transformed into mechanical power and stored, and when necessary, flywheels drive generators to generate power.

WHY CAN FLYWHEEL ENERGY STORAGE STORE ENERGY



How much energy does a flywheel store? Indeed, the development of high strength, low-density carbon fiber composites (CFCs) in the 1970s generated renewed interest in flywheel energy storage. Based on design strengths typically used in commercial flywheels, ?? max /?? is around 600 kNm/kg for CFC, whereas for wrought flywheel steels, it is around 75 kNm/kg.



At the same time, stored energy can be consumed at times of high demand, high generation cost, or when no alternative generation is available [1???4]. Energy demand continues to increase, as demanded by the households and industries with Description of Flywheel Energy Storage System 2.1. Background



In transportation, hybrid and electric vehicles use flywheels to store energy to assist the vehicles when harsh acceleration is needed. 76 Hybrid vehicles maintain constant power, which keeps ???



The kinetic energy of a high-speed flywheel takes advantage of the physics involved resulting in exponential amounts of stored energy for increases in the flywheel rotational speed. Kinetic energy is the energy of motion as quantified by the amount of work an object can do as a result of its motion, expressed by the formula: Kinetic Energy = 1



A flywheel is a rotating mechanical device that is used to store rotational energy that can be called up instantaneously. At the most basic level, a flywheel contains a spinning mass in its center that is driven by a motor ??? and when energy is needed, the spinning force drives a device similar to a turbine to produce electricity, slowing the rate of rotation.

WHY CAN FLYWHEEL ENERGY STORAGE STORE ENERGY



What is Flywheel Energy Storage? Flywheel energy storage is a form of mechanical energy storage that works by spinning a rotor (flywheel) at very high speeds. This stored energy can be quickly converted back to electricity when needed, providing a reliable and efficient way to manage power supply and demand. Flywheel energy storage systems are



Flywheel energy storage (FES) works by accelerating a rotor (a flywheel) to a very high speed, The stored energy can be released to the network by discharging the coil. The associated inverter/rectifier accounts for about 2-3% energy loss in each direction.



This concise treatise on electric flywheel energy storage describes the fundamentals underpinning the technology and system elements. Steel and composite rotors are compared, including geometric effects and not just specific strength. A simple method of costing is described based on separating out power and energy showing potential for low power cost



Flywheel energy storage devices turn surplus electrical energy into kinetic energy in the form of heavy high-velocity spinning wheels. To avoid energy losses, the wheels are kept in a frictionless vacuum by a magnetic field, allowing the spinning to be managed in a way that creates electricity when required.



Here is the integral of the flywheel's mass, and is the rotational speed (number of revolutions per second).. Specific energy. The maximal specific energy of a flywheel rotor is mainly dependent on two factors: the first being the rotor's geometry, and the second being the properties of the material being used. For single-material, isotropic rotors this relationship can be expressed as [9]

WHY CAN FLYWHEEL ENERGY STORAGE STORE ENERGY



A flywheel is a very simple device, storing energy in rotational momentum which can be operated as an electrical storage by incorporating a direct drive motor-generator (M/G) as shown in Figure 1. The electrical power to and from the M/G is transferred to the grid via inverter power electronics in a similar way to a battery or any other non



A flywheel energy storage system employed by NASA (Reference: wikipedia) How Flywheel Energy Storage Systems Work? Flywheel energy storage systems employ kinetic energy stored in a rotating mass to store energy with minimal frictional losses. An integrated motor???generator uses electric energy to propel the mass to speed. Using the same



For utility-scale storage a "flywheel farm" approach can be used to store megawatts of electricity for applications needing minutes of discharge duration. How Flywheel Energy Storage Systems Work. Flywheel energy storage systems (FESS) employ kinetic energy stored in a rotating mass with very low frictional losses.

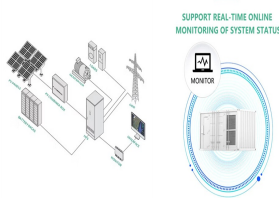


Flywheel Energy Storage (FES) systems refer to the contemporary rotor-flywheels that are being used across many industries to store mechanical or electrical energy. Also, the amount of energy stored can be accurately measured as it is directly proportional to rotation. This is not the case with storage with too much heterogeneity within its



Flywheel, heavy wheel attached to a rotating shaft so as to smooth out delivery of power from a motor to a machine. The inertia of the flywheel opposes and moderates fluctuations in the speed of the engine and stores the excess energy for intermittent use. To oppose speed fluctuations effectively,

WHY CAN FLYWHEEL ENERGY STORAGE STORE ENERGY



When the wheel spins at its maximum speed, its kinetic energy can be recovered by using the motor as a power generator. This gradually reduces the rotational speed of the flywheel. Advantages and Disadvantages Advantages - Highly efficient, with 80% of the stored energy able to be recovered. - Very quick to set in motion and convert stored



The stored energy can be used to generate electricity when needed. Flywheels have been used for centuries, but modern FES systems use advanced materials and design techniques to achieve higher efficiency, longer life, and lower maintenance costs. Flywheel energy storage is a promising technology with many advantages over other technologies



Professor of Energy Systems at City University of London and Royal Academy of Engineering Enterprise Fellow, he is researching low-cost, sustainable flywheel energy storage technology and associated energy technologies. Introduction Outline Flywheels, one of the earliest forms of energy storage, could play a significant



Therefore, it can store energy at high efficiency over a long duration. Although it was estimated in [3] that after 2030, li-ion batteries would be more cost-competitive than any alternative for A typical flywheel energy storage system [11], which includes a flywheel/rotor, an electric machine, bearings, and power electronics.



Flywheel Energy Storage Systems convert electricity into rotational kinetic energy stored in a spinning mass. The flywheel is enclosed in a cylinder and contains a large rotor inside a vacuum to reduce drag. Electricity drives a motor that accelerates the rotor to very high speeds (up to 60,000 rpm). Energy storage can help meet peak energy

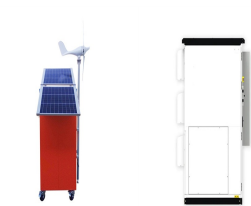
WHY CAN FLYWHEEL ENERGY STORAGE STORE ENERGY



Energy capacity???the total amount of energy that can be stored in or discharged from the storage system and is measured in units of watthours (kilowatthours [kWh], megawatthours [MWh], or gigawatthours [GWh]) Flywheel energy storage systems. In 2022, the United States had four operational flywheel energy storage systems, with a combined



This paper presents an overview of the flywheel as a promising energy storage element. Electrical machines used with flywheels are surveyed along with their control techniques. Loss minimization



The drawback of supercapacitors is that it has a narrower discharge duration and significant self-discharges. Energy storage flywheels are usually supported by active magnetic bearing (AMB) systems to avoid friction loss. Therefore, it can store energy at high efficiency over a long duration.



The flywheel schematic shown in Fig. 11.1 can be considered as a system in which the flywheel rotor, defining storage, and the motor generator, defining power, are effectively separate machines that can be designed accordingly and matched to the application. This is not unlike pumped hydro or compressed air storage whereas for electrochemical storage, the ???

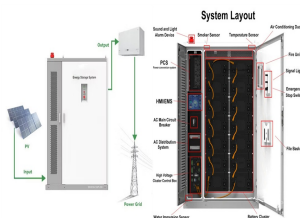


Fig. 4 illustrates a schematic representation and architecture of two types of flywheel energy storage unit. A flywheel energy storage unit is a mechanical system designed to store and release energy efficiently. It consists of a high-momentum flywheel, precision bearings, a vacuum or low-pressure enclosure to minimize energy losses due to friction and air resistance, a ???

WHY CAN FLYWHEEL ENERGY STORAGE STORE ENERGY



Flywheel energy storage is a promising replacement for conventional lead acid batteries. How does it work as an energy storage system? The amount of energy stored in the flywheel is a function of the square of its rotational speed and its mass, so higher rotational speeds are desirable. Spinning at the maximum possible speed results in an



The 20-megawatt system marks a milestone in flywheel energy storage technology, as similar systems have only been applied in testing and small-scale applications. Where these renewable technologies fall short is the inability to store energy without the use of gigantic battery banks. The flywheel system offers an alternative.



Flywheel energy storage (FES) can have energy fed in the rotational mass of a flywheel, store it as kinetic energy, and release out upon demand. It is a significant and attractive manner for energy futures "sustainable". The key factors of FES technology, such as flywheel material, geometry, length and its support system were described



The ability to store energy can reduce the environmental impacts of energy production and consumption (such as the release of greenhouse gas emissions) and facilitate the expansion of clean, renewable energy.. For example, electricity storage is critical for the operation of electric vehicles, while thermal energy storage can help organizations reduce their carbon ???



Flywheel energy storage systems are feasible for short-duration applications, which are crucial for the reliability of an electrical grid with large renewable energy penetration. The detailed calculation of the rotor outer radius and energy stored in the flywheel can be found in the SI in section S1. In this study, the shapes of the