

WHY CAN'T PHOTOVOLTAIC PANELS BE INSTALLED HORIZONTALLY



Should a solar panel be installed horizontal or vertical? However, it is more efficient to have a consecutive block of solar panels installed using the same orientation??? either vertical or horizontal. If there is a break in your roof, or you have room for one more solar panel, then your solar contractor can install the solar panel to fit the space.



Are horizontal solar panels more efficient than vertical solar panels? Horizontal solar panels are more efficient than vertical solar panels as they imbibe solar energy throughout the day. Evaluating your location???s solar potential is crucial, considering factors like latitude, shading, and roof orientation. Horizontal or vertical installation depends on optimizing sunlight exposure.



Are solar panels horizontal or vertical? You???ve probably seen some solar systems where the panels are installed in vertical orientation, and others in a horizontal orientation. This might leave you wondering, why are they different and does it matter if solar panels are horizontal or vertical? The orientation of your solar panels doesn???t affect the production of your system.



Why are solar panels installed vertically? There are a few reasons why most solar panels are installed vertically: Fewer rails are required to mount a solar panel vertically instead of horizontally. It is easier to have a continuous row of solar panels if they are installed vertically. The size of solar panels makes them well suited to be installed vertically on most roofs.



Can solar panels be installed vertically on a roof? The size of solar panels makes them well suited to be installed vertically on most roofs. Of course, not every home???or roof???is designed the same. Depending on the climate, your roof???s construction, and your solar energy needs, horizontal solar panel installation may be the right choice for your home.

WHY CAN'T PHOTOVOLTAIC PANELS BE INSTALLED HORIZONTALLY



Are horizontal solar panels a good choice for your home? Depending on the climate, your roof's construction, and your solar energy needs, horizontal solar panel installation may be the right choice for your home. The amount of direct sunlight could impact the direction in which your solar panels are installed.



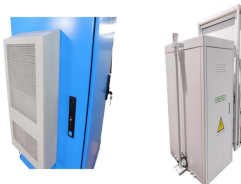
Solar panels can be installed in various orientations depending on the roof type, available space, and specific energy needs. By understanding the importance of solar panel orientation, you can make an informed decision that enhances the performance and aesthetics of your solar power system, ensuring you get the most out of your investment.



A vertical solar panel will most likely receive the full access of the sun the same as a horizontally placed panel. Solar panels are installed differently depending on the roof type and the angle of the roof. A common question is whether solar panels should be landscape (horizontal) or ???



November Solar News: China's reduction in photovoltaic export tax rebates may lead to an increase in module prices, with current solar panel prices in Europe below 6 cents per watt. France plans to install about 1.35 GW of solar capacity in Q3 2024, while Trump's upcoming tariff hikes could trigger a surge in imports and rising transport costs.

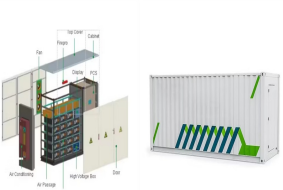


There are two types of solar panel placement methods that can be seen in many PV power plants, some are horizontal and some are vertical, what is the difference between these two methods? For distributed photovoltaic power plant installed on the roof, if it is open without shade and has a tilt installation, the same as the ground power

WHY CAN'T PHOTOVOLTAIC PANELS BE INSTALLED HORIZONTALLY



Solar panels installed horizontally on a roof at the St George Hotel in St George, QLD. In the past, panel manufacturers would not offer warranties on panels installed at an angle lower than 2 degrees, but these days most of the top manufacturers will give warranties even if their panels are installed at 0 degrees (completely flat).



The efficiency of a solar panel depends not only on the type and brand, but also on how well it captures sunlight and converts it into usable energy. Generally speaking, solar panels are tilted towards the sun for greater coverage and higher efficiency. To sum up, solar panels can be installed vertically or horizontally, depending on your



This is particularly advantageous in urban environments where tall buildings or surrounding structures can cast shadows on traditional horizontally installed solar panels. Vertical solar panels can be mounted individually or as part of an integrated system, forming a cohesive and aesthetically pleasing solar installation.



The best roofing materials for solar panel installation The type of material your roof is made of is a crucial aspect of solar installation. The ease of installation, as well as the safety of the home and the solar installer, are ???



More than 2.5 million Australian homes are fitted with PV solar generators ??? that works out to about 20 per cent of the country's households. Interestingly, nearly all residential solar panels are mounted horizontally on rooftops. The obvious alternative is ground-mounted arrays, but those require large clear spaces that aren't always available.

WHY CAN'T PHOTOVOLTAIC PANELS BE INSTALLED HORIZONTALLY



Why Vertical Solar Panels Work. It's efficient to install solar panels vertically because it gives you more space to work with. Considering the size, you can fit more panels along the railing. This keeps your installation ???



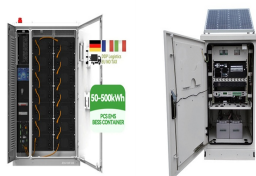
To fit one more panel on my shed, I could go landscape, 2 rows of 3 instead of 5 in a row, portrait. I saw that to do this I am supposed to mount rails horizontally and then put another set of rail on top going vertically and then mount the panels with clamps on the long edges. What happens if



Metal roofing can be installed horizontally refers to the placement of metal panels in a horizontal orientation rather than the traditional vertical orientation. While vertical installation is the most common method, horizontal installation can be considered for specific design purposes or to achieve a unique visual effect.



Traditional solar panels, which are usually installed horizontally, tend to heat up more, reducing their efficiency and potentially shortening their lifespan. Vertical panels, by maintaining lower temperatures, can therefore offer better performance and durability. For those considering solar panel installations, the insights from this



In three, horizontal design is less resistant to the wind, however, in high areas a greater stability of landscape design could be achieved if you install it this way. Solar Panel Efficiency: The benefit of solar panels and the fact they can generate electricity at different segments should be considered. The horizontal panels might

WHY CAN'T PHOTOVOLTAIC PANELS BE INSTALLED HORIZONTALLY



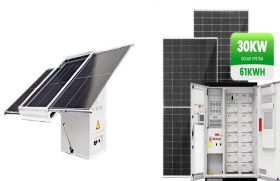
Optimize your solar panel installation! Choose the perfect orientation for your rooftop solar panels with our expert guidance on vertical vs horizontal installation. Solar panels are typically installed horizontally to maximize their exposure to the sun's direct rays. However, in certain circumstances, solar power systems for homes may be



That is why I was asking and wanted to be extra sure. FYI - If I go with panels that are 42 by 84 (I rounded up) it does not seem to matter about the layout - as it would fit in the same footprint. Example: Horizontal would be 3 panels across and 4 panels high. Vertical would be 6 panels across and 2 panels high.



Using a panel lifter isn't even as easy and safe as Vertical's tilt-up. 9 - Additional Waste - When correctly covering a knee wall, half wall, tub front, column or soffit by first removing both tapered edges, Horizontal can't use the tapers elsewhere (Vertical can and does).

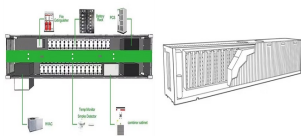


Hi, installing some sharp panels in a few days in a configuration whereby they will all be in a horizontal line and in landscape format. I was planning on using hanger bolts with the rails also running horizontally. I know your not meant to use clamps on the short sides of the panels so wondering if anyone has installed the panels with the long sides resting on the rails ???



The problem with solar cell efficiency lies in the physical conversion of sunlight. In 1961, William Shockley and Hans Queisser defined the fundamental principle of the solar photovoltaic industry. Their physical theory ???

WHY CAN'T PHOTOVOLTAIC PANELS BE INSTALLED HORIZONTALLY



Drywall panels installed horizontally increase the shear strength of walls. Shear strength is the ability of a wall to resist lateral loads, such as wind. The horizontal installation also reduces the likelihood of sagging in walls, which could lead to ???



Nearly seven in 10 solar panel owners we surveyed have had no technical problems with their solar panel system since it was installed. Among those who did report a technical fault, inverter problems were by far the most common. Some 15% of ???



These systems also perform better in the morning and the afternoon hours, unlike horizontal solar panels that peak at noon. Solar panel orientation. In the UK, the best solar panel orientation is the south. Solar panels installed on east, west and north-facing roofs don't have the energy efficiency of solar panels facing south.

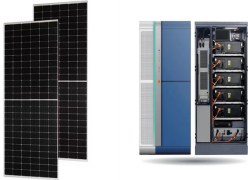


While it's more common to see solar panels installed horizontally, in some instances installing Panels vertically can be more beneficial. However, there are pros and cons of installing vertical Solar Panels that should be considered. If antennas and other structures make the roof too cluttered for installing horizontal rooftop solar panel



Power Loss Table: This table shows how much energy you can expect to get from almost any combination of solar panel direction and angle in the capital cities, compared to the "optimum" orientation. For example, in Brisbane, if your panels are facing West (270°) and are angled 20° from horizontal, you will get 89% of the energy compared to the optimum ???

WHY CAN'T PHOTOVOLTAIC PANELS BE INSTALLED HORIZONTALLY



Ever noticed most solar panels installed on Australian roofs are mounted in portrait orientation? It's not about energy yield. In terms of energy yield, an unshaded portrait panel will generate the same as a landscape solar panel. 1. Solar Panels: Portrait Vs. Landscape tell you you can't have all the panels you've been promised



Vertically installed drywall is much rarer than horizontally installed drywall. This is because it's less practical and more expensive in general, but it does have specific uses. And in all other joint areas of the drywall adds longevity to the panels. Drywall degrades over time and forms cracks if it isn't placed to allow it to



Most racking options I've seen are designed to be installed horizontally. If they were installed at an angle then leaking would almost definitely happen. I have seen a railless system that would work, but you'd likely have to buy extra ???