

WHY IS NAURU LITHIUM BANNED IN ENERGY STORAGE



Can lithium-ion battery storage stabilize wind/solar & nuclear? In sum, the actionable solution appears to be ???8 h of LIB storage stabilizing wind/solar +nuclear with heat storage, with the legacy fossil fuel systems as backup power (Figure 1). Schematic of sustainable energy production with 8 h of lithium-ion battery (LIB) storage. LiFePO₄ //graphite (LFP) cells have an energy density of 160 Wh/kg (cell).



Are lithium-ion batteries available long-term? This study investigates the long-term availability of lithium (Li) in the event of significant demand growth of rechargeable lithium-ion batteries for supplying the power and transport sectors with very-high shares of renewable energy.



Are lithium-ion batteries a good choice for energy storage? Lithium-ion batteries are being widely deployed in vehicles, consumer electronics, and more recently, in electricity storage systems. These batteries have, and will likely continue to have, relatively high costs per kWh of electricity stored, making them unsuitable for long-duration storage that may be needed to support reliable decarbonized grids.



Are next-generation lithium-ion batteries sustainable? Next-generation batteries have long been heralded as a transition toward more sustainable storage technology. Now, the need to enable these lithium-ion alternatives is more pressing than ever.



Do battery systems not based on Li reduce the demand of LIBs? For stationary applications, battery systems not depending on Li reduce the demand of LIBs. Considering eligible batteries ??? early stage of maturity, the contributing share increases from almost zero to 50% by 2050 (Supplementary Fig. 25 and Supplementary Table 8).

WHY IS NAURU LITHIUM BANNED IN ENERGY STORAGE



Are 'conventional' lithium-ion batteries approaching the end of their era? It would be unwise to assume ???conventional??? lithium-ion batteries are approaching the end of their era and so we discuss current strategies to improve the current and next generation systems, where a holistic approach will be needed to unlock higher energy density while also maintaining lifetime and safety.



A battery storage power station, or battery energy storage system (BESS), is a type of energy storage power station that uses a group of batteries to store electrical energy. Battery storage ???



After a decade of lithium-ion procurement, the leading clean energy states are finally turning their attention to long duration energy storage. Although it may still seem like a new idea, state-mandated procurement of energy storage has actually been going on for more than a decade. As of mid-2024, twelve U.S. states have set intentions to???



Warwick Johnston, managing director of solar consultancy Sunwiz, says a ban on lithium ion solar storage batteries in homes makes no sense. Allen says his company has around 30,000 of its Residential Energy Storage Unit batteries installed globally, and batteries in more than half a million electric vehicles, and there has not been a single



Within large-scale lithium-ion battery energy storage systems, there have been 40 known fires in recent years, according to research from Newcastle University. Creating plans for discarding, storing, and charging batteries is critical. But it's important to separate misinformation from facts. The following myth vs. reality document can help.

WHY IS NAURU LITHIUM BANNED IN ENERGY STORAGE

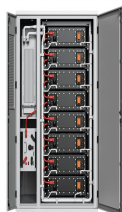
TAX FREE



Lithium, the lightest element of all the metals, is a crucial resource for the United States' clean energy future: it's key in the production of lithium-ion rechargeable batteries, which are used to power electric vehicles and serve as home storage systems. While the U.S. is the largest consumer of lithium and will only increase its future consumption as it strives to meet ???



MITEI's three-year Future of Energy Storage study explored the role that energy storage can play in fighting climate change and in the global adoption of clean energy grids. Replacing fossil fuel-based power generation with power generation from wind and solar resources is a key strategy for decarbonizing electricity. Storage enables electricity systems to remain in ??? Read more



Recent years have seen a growing preference for lithium-based and lithium-ion batteries for energy storage solutions as a sustainable alternative to the traditional lead-acid batteries. As technology has advanced, a new winner in the race for energy storage solutions has emerged: lithium iron phosphate batteries (LiFePO_4).



Lithium-ion batteries are being widely deployed in vehicles, consumer electronics, and more recently, in electricity storage systems. These batteries have, and will likely continue to have, ???

114KWh ESS



Lithium mining has gained prominence due to the increasing global demand for lithium-ion batteries, which are crucial components in powering electronic devices, electric vehicles (EVs), and energy storage systems.

WHY IS NAURU LITHIUM BANNED IN ENERGY STORAGE



A lithium-ion based containerized energy storage system Why Lithium-Ion is the Preferred Choice. Lithium-ion batteries have a high energy density, a long lifespan, and the ability to charge/discharge efficiently. They also have a low self-discharge rate and require little maintenance. Lithium-ion batteries have become the most commonly used



Applications of Lithium-Ion Batteries in Grid-Scale Energy Storage ??? In the electrical energy transformation process, the grid-level energy storage system plays an essential role in balancing power generation and utilization. Batteries have considerable potential for application to grid-level energy storage systems because of their rapid



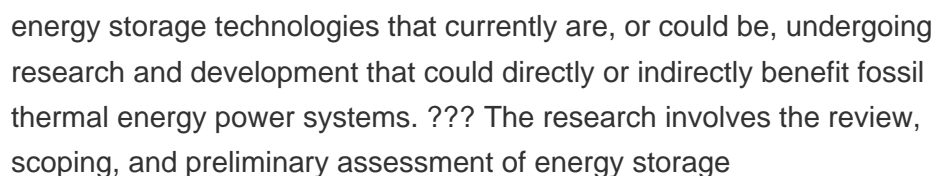
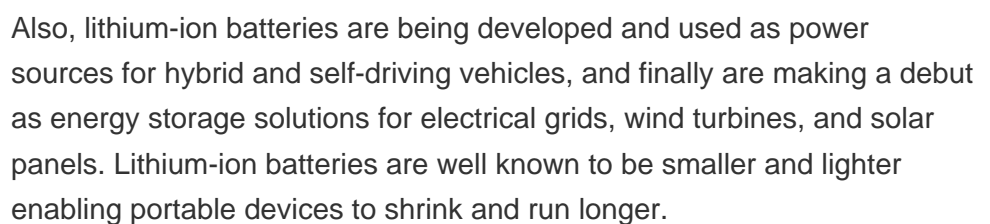
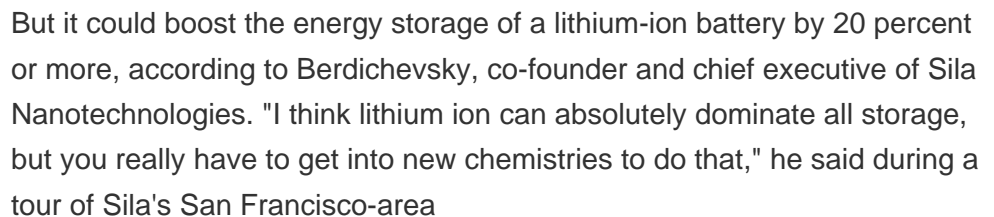
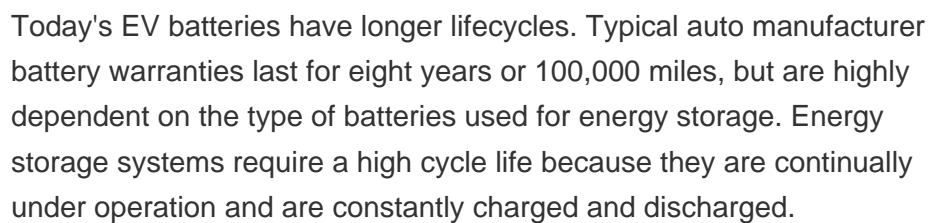
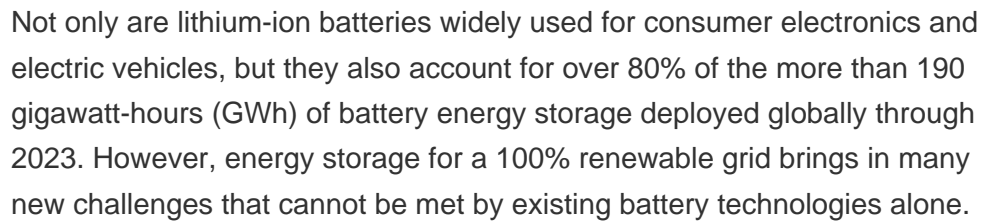
Lithium-ion battery storage devices ??? including Tesla Powerwalls and other products ??? may be effectively banned from being installed inside homes and garages in Australia under new guidelines



Lithium-ion batteries are one such technology. Although using energy storage is never 100% efficient???some energy is always lost in converting energy and retrieving it???storage allows the flexible use of energy at different times from when it was generated. So, storage can increase system efficiency and resilience, and it can improve power



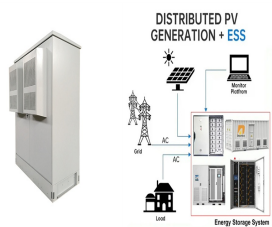
A battery storage power station, or battery energy storage system (BESS), is a type of energy storage power station that uses a group of batteries to store electrical energy. Battery storage is the fastest responding dispatchable source of power on electric grids, and it is used to stabilise those grids, as battery storage can transition from



WHY IS NAURU LITHIUM BANNED IN ENERGY STORAGE



1) Storage increases the value of the energy sources it draws from (a source that can store some of its energy can generate more) and decreases the value of the energy sources it competes against



In early February, Duke Energy said it would decommission an 11MW/11 MWh lithium iron phosphate battery storage system at the Marine Corps base at Camp Lejeune, North Carolina. The system entered service in the spring of 2023 as part of a US\$22 million energy services contract. It used a battery sourced from Chinese supplier CATL.



Investing in energy storage technologies could be key for governments to avoid the precarity of overreliance. A BES technology that has evolved into large-scale market production is the lithium-ion (Li-ion) battery. It has high energy density and efficiency, as it can remain charged for longer than other battery types.



To reach the hundred terawatt-hour scale LIB storage, it is argued that the key challenges are fire safety and recycling, instead of capital cost, battery cycle life, or mining/manufacturing ???



This has led to a spike in lithium mining: from 2017 to 2022, demand for lithium tripled, mostly driven by the energy sector. 1. Why is lithium so desirable for these applications? Lithium-ion batteries hold energy well for their mass and size, which makes them popular for applications where bulk is an obstacle, such as in EVs and cellphones.

WHY IS NAURU LITHIUM BANNED IN ENERGY STORAGE



The first rechargeable lithium battery was designed by Whittingham (Exxon) and consisted of a lithium-metal anode, a titanium disulphide (TiS_2) cathode (used to store Li-ions), and an electrolyte composed of a lithium salt dissolved in an organic solvent. 55 Studies of the Li-ion storage mechanism (intercalation) revealed the process was



An increased supply of lithium will be needed to meet future expected demand growth for lithium-ion batteries for transportation and energy storage. Lithium demand has tripled since 2017 [1] and is set to grow tenfold by 2050 under the International Energy Agency's (IEA) Net Zero Emissions by 2050 Scenario. [2]



Amid this ban and the growing awareness of the need for eco-friendly alternatives, Su-vastika Lithium Battery-based Energy Storage Systems (BESS) have emerged as a pollution-free and sustainable alternative for meeting energy needs. In this article, we will explore the reasons behind the diesel generator ban in Delhi NCR and why Su-vastika



As the photovoltaic (PV) industry continues to evolve, advancements in what are the lithium energy storage manufacturers in nauru west africa - Suppliers/Manufacturers have become critical to optimizing the utilization of renewable energy sources. From innovative battery technologies to intelligent energy management systems, these solutions are



It is believed that a practical strategy for decarbonization would be 8 h of lithium-ion battery (LIB) electrical energy storage paired with wind/solar energy generation, and using existing fossil fuels facilities as backup. (LFP) cells have an energy density of 160 Wh/kg(cell). Eight hours of battery energy storage, or 25 TWh of stored

WHY IS NAURU LITHIUM BANNED IN ENERGY STORAGE



why don't large energy storage stations use nauru lithium. Market reacts to falling BESS prices. As Energy-Storage.news reported last month, global prices for battery energy storage systems (BESS) have been on a downward trend since early 2023, having shot up in 2022. But it could boost the energy storage of a lithium-ion battery by 20



Lithium-ion batteries as distributed energy storage systems for ???
Lithium was discovered in a mineral called petalite by Johann August Arfvedson in 1817, as shown in Fig. 6.3. This alkaline material was named lithion/lithina, from the Greek word $\lambda\theta\omicron\varsigma$ (transliterated as lithos, meaning "stone"), to reflect its discovery in a solid mineral, as opposed to potassium, which had been



A pause on the building of new energy battery storage sites would undermine the county's commitment to its new Climate Action Plan. The County Board of Supervisors will decide on Sept. 11 whether to ban building battery storage until stricter fire safety restrictions are in place. large, lithium-ion battery storage facilities