

WILL SOLAR PANELS BE HEAVY



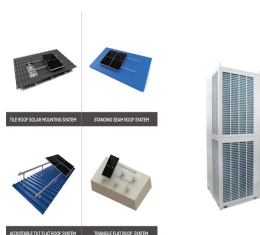
The number of solar panels required to power a typical UK home will depend on the home's energy demands and the size and orientation of the roof. In the UK, a single solar panel typically has a size of around 1.6 square metres (17.2 square feet) to two square metres (21.5 square feet) and has a power output of between 250 and 400 watts.



They effectively withstand heavy winds, rainfall, hailstorms, and fires, offering protection in high-altitude regions prone to natural disasters. Solar panels are robust, built to endure harsh weather, and they serve as a protective layer that minimizes everyday deterioration. When attaching solar panels to a metal roof, the risk of leaks



A typical solar module includes a few essential parts: Solar cells: We've talked about these a lot already, but solar cells absorb sunlight. When it comes to silicon solar cells, there are generally two different types: monocrystalline and polycrystalline. Monocrystalline cells include a single silicon crystal, while polycrystalline cells contain fragments of silicon.



Solar panels work in the wintertime and can even be more efficient than in the summer months. This is because, like with many electric devices, solar panels can overheat when it's too hot



1 ? As extreme snowfall hit South Korea in late November, an image showing damaged solar panels was repeatedly shared in posts that falsely claimed it was taken in the country. The posts criticised former president Moon Jae-in for scaling up solar energy production facilities as part of a bid to turn the country carbon neutral by 2050. However, the image dates back to US news ???

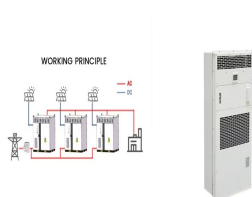
WILL SOLAR PANELS BE HEAVY



Discover which solar panel sizes and dimensions are the most common in the UK, as well as which size is the best for your home. 0330 818 7480. Become a Partner. Menu. Solar Panels How heavy are solar panels? Includes the weight of the frames and mounting equipment. In addition to solar panel size, you should also consider the weight.



This panel should produce about 1.125 kWh/day (accounting for 25% losses); that's 410 kWh/year from a single 300W panel. If you have to match solar generation with 300W panels with 130,000 l of diesel annually, you have to ???



A solar panel system typically generates double its "size". For example, a standard "4 kilowatt peak" (kWp) solar panel system could generate around 8kWh of electricity in a day (weather-dependent). Therefore, you'd want a battery that has a maximum capacity of 8kWh to store all the energy your solar system could potentially produce.



Why are solar panels so heavy? The working part of a solar panel, the actual solar cell, is very thin and doesn't weight much at all, but the crystalline structure is brittle, as are the bus-bars connecting them together. If they crack, or the connection breaks away, that cell will become useless, reducing the efficiency of the whole solar panel.



That said, most solar pv panels in the UK will not need any heavy-duty cleaning because regular rain will wash most dirt and grime off the surface, dispelling one of the myths about solar being its difficulty to clean.



The efficiency of solar panels can vary depending on factors such as the type of solar panel, the temperature, and the angle at which the sunlight hits the panel. Solar panels are typically installed on rooftops, but they ???

WILL SOLAR PANELS BE HEAVY



In contrast, heavy snow accumulation can prevent solar photovoltaic (PV) panels from generating power by blocking light from reaching the panel. However, once the snow starts to slide off, even if only a part of the panel is exposed, power generation can resume.



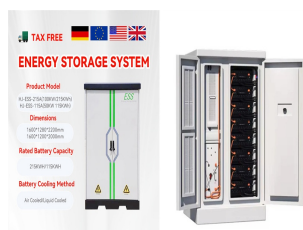
Use our solar panel buying advice and see our solar panel brand reviews to help make your decision. What is the best angle and roof direction for solar panels? The table below shows the percentage of the maximum output you will get from a solar PV system, depending on your roof orientation (west, south, east) and tilt angle (source: the Energy Saving Trust).



What Makes Solar Panels So Heavy? The combined materials that go into the construction of solar panels determine the weight of each panel. Rigid solar panels generally include tempered glass and aluminium as the ???

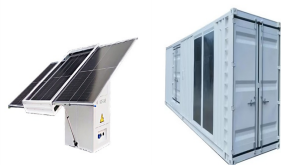


Solar panels gradually see a reduction in their efficiency and output as a result of damage caused by UV rays and the elements (e.g. heavy snowfall, a rain storm, heavy wind etc.). As solar panels decline over time, there will come a point at which it will generally make sense to have them replaced.



A solar panel installation of this nature is always best carried out by industry experts who understand the sun's location and solar panel angles to achieve the best results. At Effective Home, we can create solar panel systems for flat roofs that work optimally to provide domestic properties and commercial buildings with the solar energy they need.

WILL SOLAR PANELS BE HEAVY



So how do you find out if solar panels are too heavy for your roof? Solar panels and equipment weigh 2-4 pounds per square foot of equipment; to find out if your roof is strong enough to support them, you need ???



Solar panels typically weigh between 15 and 50 pounds, with most residential panels settling around 40 pounds.. Various sizes and models differ in weight, but a standard 60-cell residential solar panel measures about 5.4 feet by 3.25 feet ???



The size of a solar panel should be chosen based on factors such as available space, energy needs, and budget. Solar panels can be combined to create larger systems, and the size of the system will depend on the energy needs of the user. Choosing the right size of the solar panel is important for maximizing energy production and cost savings.



While solar panels are not extremely heavy, they're built solid to withstand all kinds of environmental pressures. Most 60-cell PV solar panels weigh 35 to 45 pounds, with the majority settling around the middle of this range at 40 pounds. This weight is spread out over the full surface area of the panel. At roughly 5.5 feet by 3.25 feet, a



Solar panels are designed to sit outside in the elements for over 25 years, and heavy rains are no match for rooftop and ground-mounted solar panels. Solar panels are waterproof and can withstand severe downpours due to their careful construction. Solar panel racking systems and the panels themselves are more than durable enough to withstand



Kit (Solar Panel Basic Heavy) don't have logic inputs. Kit (Solar Panel Heavy) have logic inputs. Positioning . Pay close attention to the positioning of your solar panel since their automation will depend heavily on it. Most user-made scripts and guides orient the panels with the data

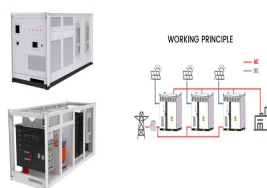
WILL SOLAR PANELS BE HEAVY

port facing sunset and the power port facing sunrise.

WILL SOLAR PANELS BE HEAVY



Expert Insights From Our Solar Panel Installers About How Heavy Solar Panels Are. Understanding the weight of solar panels is essential for ensuring the structural integrity of your roof. Each residential solar panel typically weighs between 33 and 50 pounds, which is manageable for most roofs with proper load distribution. Senior Solar Engineer



Install the Solar Panels The solar panels are attached to the mounting rails using clamps or brackets. A small gap is left between the panels for thermal expansion and proper ventilation. The electrical components are now connected. The solar panels are connected in series or parallel depending on the system design.



Find out what flexible solar panels are and assess whether they might be a good option for you in terms of budget, design, efficiency and ease of use. Menu Close. Solar panels. and need a less heavy-duty solar solution to match; you live a nomadic, off-grid lifestyle or are looking to go off-grid for a few weeks. Flexible solar panels are



Solar panel inverter problems, dirty solar panels, pigeon problems under solar panels, generation meter and electrical problems with solar PV, and much more. Get expert tips on how to solve the most common ???



How many solar panels can you fit on a garage roof? In the UK, the average roof size for a medium single garage is around 2.7 m x 5.5 m. With this size, you could fit around four to six solar panels, assuming each panel is ???



Traditional solar panels can be heavy, whereas curved solar panels are significantly lightweight, making them ideal for portable solar chargers, camping, RVs, and other on-the-go applications. Curved solar panels also offer an aesthetic advantage, seamlessly integrating into architectural

WILL SOLAR PANELS BE HEAVY

designs and adding a futuristic touch to modern

WILL SOLAR PANELS BE HEAVY



Solar panels are quite heavy because they are made of sturdy materials like metal and tempered glass. The typical size of a solar panel has changed dramatically throughout the years. Panels were huge and unwieldy in the early days of solar power. However, as technology has advanced, panels have become smaller and more efficient.