

WILL THE FLYWHEEL OF THE FLYWHEEL ENERGY STORAGE NOT STOP



Could flywheels be the future of energy storage? Flywheels, one of the earliest forms of energy storage, could play a significant role in the transformation of the electrical power system into one that is fully sustainable yet low cost.



What is a flywheel energy storage system? A flywheel energy storage system is a device that stores energy in a rotating mass. It typically includes a flywheel/rotor, an electric machine, bearings, and power electronics. Fig. 3. The Beacon Power Flywheel, which includes a composite rotor and an electric machine, is designed for frequency regulation.



Are flywheels a good choice for electric grid regulation? Flywheel Energy Storage Systems (FESS) are a good candidate for electrical grid regulation. They can improve distribution efficiency and smooth power output from renewable energy sources like wind/solar farms. Additionally, flywheels have the least environmental impact amongst energy storage technologies, as they contain no chemicals.



How can flywheels be more competitive to batteries? To make flywheels more competitive with batteries, the use of new materials and compact designs can increase their specific energy and energy density. Additionally, exploring new applications like energy harvesting, hybrid energy systems, and secondary functionalities can further enhance their competitiveness.



What are some new applications for flywheels? Other opportunities for flywheels are new applications in energy harvest, hybrid energy systems, and flywheels' secondary functionality apart from energy storage. The use of new materials and compact designs will increase the specific energy and energy density to make flywheels more competitive to batteries.

WILL THE FLYWHEEL OF THE FLYWHEEL ENERGY STORAGE NOT STOP



What are the advantages of flywheel ESS (fess)? Flywheel energy storage systems (FESS) have several advantages, including being eco-friendly, storing energy up to megajoules (MJ), high power density, longer life cycle, higher rate of charge and discharge cycle, and greater efficiency.



The power supply system of Diesel generator (DG) is isolated, Sudden loading and unloading will cause the fluctuation of DG speed and affect the power quality. Flywheel energy a?|



Flywheel energy storage (FES) is a technology that stores kinetic energy through rotational motion. The stored energy can be used to generate electricity when needed. Flywheels have been used for centuries, but modern a?|

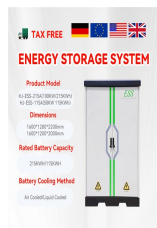


an energy storage source alternative. In particular, this is focused on the fact that reducing the amount of materials needed to produce the greatest amount of energy, i.e., high energy a?|

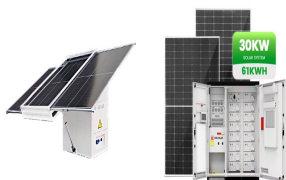


Video Credit: NAVAJO Company on The Pros and Cons of Flywheel Energy Storage. Flywheels are an excellent mechanism of energy storage for a range of reasons, starting with their high efficiency level of 90% a?|

WILL THE FLYWHEEL OF THE FLYWHEEL ENERGY STORAGE NOT STOP



Despite its first-glance attractiveness, flywheel-based energy storage presents multiple major challenges. The stored energy is proportional to the rotor wheel's moment of inertia and the square of the rotational speed, so a?



The flywheel continues to store energy as long as it continues to spin; in this way, flywheel energy storage systems act as mechanical energy storage. When this energy needs to be retrieved, the rotor transfers its a?



To date, an electric power generation system with a non-stop continuous flywheel energy storage system is still unrealistic, but it has not become impossible to find. Studies are still ongoing to achieve this dream and a?

Commercial and Industrial ESS

- Air Cooling / Liquid Cooling
- Plug-and-play Solution
- Renewable Energy Integration
- Modular Design for Flexible Expansion



Figure 1 The rotating mass is the heart of the flywheel-based energy storage and recovery system; while that is the most technically challenging part of the system, there is a substantial amount of additional a?



Flywheel energy storage (FES) works by accelerating a rotor (flywheel) to a very high speed and maintaining the energy in the system as rotational energy. The flywheel itself is typically a very heavy wheel that a?

WILL THE FLYWHEEL OF THE FLYWHEEL ENERGY STORAGE NOT STOP



A flywheel, in essence is a mechanical battery - simply a mass rotating about an axis. Flywheels store energy mechanically in the form of kinetic energy. They take an electrical input to accelerate the rotor up to speed by a?



flywheel, heavy wheel attached to a rotating shaft so as to smooth out delivery of power from a motor to a machine. The inertia of the flywheel opposes and moderates fluctuations in the speed of the engine and stores the a?