

# WIND POWER STOPS GENERATING ELECTRICITY



Why do wind turbines stop? Wind turbines may be stopped because there is not enough wind, since this is an intermittent resource. But the strange thing is that, even though this might sound like a contradiction, too much wind also causes wind turbines to stop. Anything in excess of 25 m/s (90 km/hr) is dangerous for the wind turbine so it opts to shut down.



Why are UK wind turbines being switched off? UK windfarms hit an all-time high in wind power last year, generating more than 80 thousand gigawatt hours (GWh) and enough power for over 22 million homes. Yet, reports also came out of wind turbines being switched off due to overcapacity??? at the expense of customers.



Why are UK consumers paying so much to turn wind turbines off? UK consumers are paying hundreds of millions of pounds to turn wind turbines off because the grid cannot deal with how much electricity they make on the windiest days. The energy regulator Ofgem has told Sky News it is because the grid is "not yet fit for purpose" as the country transitions to a clean power system by 2035.



Does too much wind cause wind turbines to stop? But the strange thing is that, even though this might sound like a contradiction, too much wind also causes wind turbines to stop. Anything in excess of 25 m/s (90 km/hr) is dangerous for the wind turbine so it opts to shut down. The connection speed is generally from 3 m/s (19.8 km/hr). This is the speed at which electricity starts to be generated.



Why is the national grid paying ?215m to shut off wind turbines? The National Grid paid ?215m to get them shut off last year - a cost that eventually ends up on people's bills. UK consumers are paying hundreds of millions of pounds to turn wind turbines off because the grid cannot deal with how much electricity they make on the windiest days.

# WIND POWER STOPS GENERATING ELECTRICITY



Does wind energy go to waste? This means that when wind power is at its peak, the amount of electricity being generated could potentially outstrip the amount that's required by homes and businesses at that particular time. Fortunately, there are solutions to make sure excess wind energy doesn't simply go to waste: 1. Storing energy to be used later



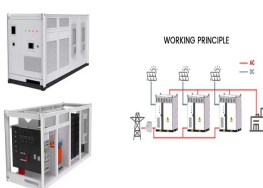
Anything that moves has kinetic energy, and scientists and engineers are using the wind's kinetic energy to generate electricity. Wind energy, or wind power, is created using a wind turbine, a device that channels the power of the wind to generate electricity. The wind blows the blades of the turbine, which are attached to a rotor. The rotor then spins a generator to



Wind energy is a form of renewable energy, typically powered by the movement of wind across enormous fan-shaped structures called wind turbines. Once built, these turbines create no climate-warming greenhouse gas emissions, making this a "carbon-free" energy source that can provide electricity without making climate change worse. Wind energy is the third



Wind energy plays an influential role in addressing climate change on a global level. Many countries around the world have been working hard to lower their carbon emissions during the last decades. Some of the world's leading markets, such as the US, Denmark, Australia and the UK have recognized the power of clean energy in reducing carbon pollution, and this



2.4. Value of wind power generation. Wind turbines in operation convert available wind energy close to the earth's surface, which is renewable, carbon-free, into a quantity of electricity ranging from 1,700 to 2,200 MWh per installed MW per year, depending on the land site and operating conditions.

# WIND POWER STOPS GENERATING ELECTRICITY



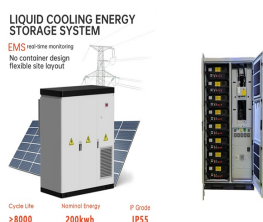
How wind turbines work. Wind turbines use blades to collect the wind's kinetic energy. Wind flows over the blades creating lift (similar to the effect on airplane wings), which causes the blades to turn. The blades are connected to a drive shaft that turns an electric generator, which produces (generates) electricity.



Turbines can generate electricity in wind speeds of 6mph up to 55mph, when they need to be shut down to avoid damage. Wind farms & wind power plants. What is a wind farm? A wind farm is a place dedicated to wind energy generation. It usually involves a large number of wind turbines grouped together to create wind power in bulk.



What happens to excess electricity generated by wind turbines? Excess electricity can be stored in batteries or sent back to the grid, where it helps balance supply and demand. Are wind turbines effective in all locations? Wind turbines are most effective in areas with consistent wind speeds, such as offshore locations, open plains, and



Wind farms are areas where a number of wind turbines are grouped together, providing a larger total energy source. As of 2018 the largest wind farm in the world was the Jiuquan Wind Power Base, an array of more than 7,000 wind turbines in China's Gansu province that produces more than 6,000 megawatts of power. The London Array, one of the world's ???



Anything in excess of 25 m/s (90 km/hr) is dangerous for the wind turbine so it opts to shut down. The connection speed is generally from 3 m/s (19.8 km/hr). This is the speed at which electricity starts to be generated. Another reason ???

# WIND POWER STOPS GENERATING ELECTRICITY



We understand the importance of keeping turbine downtime to a minimum and will do everything within our power to get you up and running as soon as possible. We stock essential products for our clients and can have our internal technicians ready to assist when needed. At Kurz Wind, we take pride in our strong and trusted partnerships with



Alternative Energy from Solar, Wind, Biomass, UK windfarms hit an all-time high in wind power last year, generating more than 80 thousand gigawatt hours (GWh) and enough power for over 22 million homes. Yet, ???



Wind power has a long history. Back in 900 B.C., the Persians were using windmills to pump water and grind grain, writes the Department of Energy. Still, the windmill's use in generating



Often confused with windmills for their similarity in appearance and basic principle, a wind turbine is a device to harness the power of the wind and use it to generate electricity. Windmill, on the other hand, is a structure with sails or ???



Just one turbine can make the electricity to power 16,000 homes a year. When you think we have multiple wind farms all around the UK, you can see that adds up to an awful lot of power." The UK government plans to invest ?160m in ???

# WIND POWER STOPS GENERATING ELECTRICITY



Wind turbines can carry on generating electricity for 20-25 years. Over their lifetime they will be running continuously for as much as 120,000 hours. This compares with the design lifetime of a car engine, which is 4,000 to 6,000 hours.



That's the minimum wind speed below which the wind turbine stops generating electricity. Cut-in speed varies among different types of wind turbines. For example, the 225kw Vestas V27 wind turbines???which we operate on our various sites around the United Kingdom???all cut-in (i.e. start generating electricity) as soon as the wind speed reaches 3.5 metres per second (mps), or ???



Deploying renewable energy resources like wind turbines is a way to mitigate the impacts of global climate change and lessen the impacts of extreme weather in the future. is when the blades start rotating and generating power. As wind speeds increase, more electricity is generated until it reaches a limit, known as the rated speed. This is



Today's Wind Energy Fact explains how wind turbines produce more or less power based on those speeds! (Note: wind speed and power production details vary based on turbine models and capacity, but for today's example, we'll use a Goldwind 87-1500 wind turbine.) the color light blue, the color dark blue, and the wind turbine logo are



The UK government's British energy security strategy sets ambitions for 50GW of offshore wind power generation ??? enough energy to power every home in the country ??? by 2030. However, as wind power can be ???

# WIND POWER STOPS GENERATING ELECTRICITY



The capacity of this wind farm is 300 megawatts (200 x 1.5), but how much electricity it will actually produce depends on many factors, and if you look at the average production of all those wind turbines over a certain period of time - usually a year - and you divide that number by the maximum capacity of all those wind turbines, you get the capacity factor number.



UK windfarms hit an all-time high in wind power last year, generating more than 80 thousand gigawatt hours (GWh) and enough power for over 22 million homes. Yet, reports also came out of wind turbines being ???



Alternatively, a wind farm or a single wind turbine can generate electricity that is used privately by an individual or small set of homes or businesses. Why are wind turbines usually white or pale grey? Wind turbines do tend to be either white or very pale grey ??? the idea being to make them as visually unobtrusive as possible.



We can use moving air, or wind, to generate electricity. This is called wind power. In 2021, Canada had the ability to generate 14 300 MW of wind power. Did you know? About 5% of the world's electricity comes from wind power. Wind Turbines. Wind power is usually generated using a wind turbine. Wind turbines are mechanical systems that convert



The wind turns a wind turbine close turbine Revolving machine with blades that are turned by wind, water or steam. Turbines in a power station turn the generators. which generates the electricity



# WIND POWER STOPS GENERATING ELECTRICITY



Electricity is delivered to the power grid and distributed to the end user by electric utilities or power system operators. Offshore wind turbines are also utility scale wind turbines that are erected in large bodies of water, usually on the continental shelf. Offshore wind turbines are larger than land-based turbines and can generate more power.



This subreddit is an unofficial community about the video game "Space Engineers", a sandbox game on PC, Xbox and PlayStation, about engineering, construction, exploration and survival in space and on planets.



This article deals only with wind power for electricity generation. Today, wind power is generated almost completely with wind stop, and control the turbine. In 1919, the German physicist Albert Betz showed that for a hypothetical ideal wind-energy extraction machine, the fundamental laws of conservation of mass and energy allowed no



Wind power plants produce electricity by having an array of wind turbines in the same location. The placement of a wind power plant is impacted by factors such as wind conditions, the surrounding terrain, access to electric transmission, and other siting considerations. Direct-drive generators don't rely on a gearbox to generate electricity



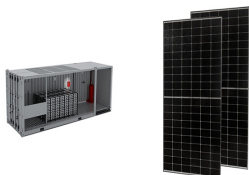
Humans use this wind flow, or motion energy, for many purposes: sailing, flying a kite, and even generating electricity. The terms "wind energy" and "wind power" both describe the process by which the wind is used to generate mechanical ???

# WIND POWER STOPS GENERATING ELECTRICITY

---



When it's too windy and turbines are producing lots of clean power, the grid people ask some wind turbines to switch off to stop the grid from getting overloaded. This isn't a problem with wind turbines, they're just doing their job, the real a problem lies with the grid which needs to be upgraded to support a new smarter energy system.



The appeal of electricity generation from wind power has its foundations in the exceptional resource potential and great power density. As with a few other globally available technologies, wind power, if fully exploited, could completely satisfy the demands of the world for energy. and programmed to stop spinning at a cut-out wind speed of