

# WORKING PRINCIPLE OF LITHIUM BATTERY ENERGY STORAGE SYSTEM



The battery energy storage system's (BESS) essential function is to capture the energy from different sources and store it in rechargeable batteries for later use. Often combined with renewable energy sources to accumulate the renewable energy during an off-peak time and then use the energy when needed at peak time. This helps to reduce costs and establish benefits ???



Working principle of lithium-ion battery energy storage power station: The working principle of emergency lithium-ion energy storage vehicles or megawatt-level fixed energy storage power stations is to directly convert high-power lithium-ion battery packs into single-phase and three-phase AC power through inverters.



The lithium ions are small enough to be able to move through a micro-permeable separator between the anode and cathode. In part because of lithium's small atomic weight and radius (third only to hydrogen and helium), Li-ion batteries ???



Here are some of the main benefits of a home solar battery storage system. Stores excess electricity generation. Your solar panel system often produces more power than you need, especially on sunny days when no one is at home. If you don't have solar energy battery storage, the extra energy will be sent to the grid.



Similarly, for batteries to work, electricity must be converted into a chemical potential form before it can be readily stored. Batteries consist of two electrical terminals called the cathode and the anode, separated by a chemical material called an electrolyte. To accept and release energy, a battery is coupled to an external circuit.

# WORKING PRINCIPLE OF LITHIUM BATTERY ENERGY STORAGE SYSTEM



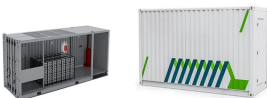
to other energy storage technologies is given in Chapter 23: Applications and Grid Services. A detailed assessment of their failure modes and failure prevention strategies is given in Chapter 17: Safety of Electrochemical Energy Storage Devices. Lithium-ion (Li-ion) batteries represent the leading electrochemical energy storage technology. At



Battery storage, or battery energy storage systems (BESS), are devices that enable energy from renewables, like solar and wind, to be stored and then released when the power is needed most. Lithium-ion batteries, which are used in mobile phones and electric cars, are currently the dominant storage technology for large scale plants to help electricity grids ???



A battery energy storage system (BESS) captures energy from renewable and non-renewable sources and stores it in rechargeable batteries (storage devices) for later use. A battery is a Direct Current (DC) device and when needed, the electrochemical energy is discharged from the ???



The higher volumetric and gravimetric energy storage capability are key characteristics of the Li-ion battery system compared to the conventional sealed nickel-cadmium (Ni-Cd), nickel-metal ???



Lithium-ion batteries are widely utilized in various fields, including aerospace, new energy vehicles, energy storage systems, medical equipment, and security equipment, due to their high energy

# WORKING PRINCIPLE OF LITHIUM BATTERY ENERGY STORAGE SYSTEM



Working Principle of Lithium-ion Batteries. Energy Storage Systems: Effective cooling systems are necessary to handle the large energy throughput in grid storage applications. The packaging of lithium-ion batteries ???



Battery storage plays an essential role in balancing and managing the energy grid by storing surplus electricity when production exceeds demand and supplying it when demand exceeds production. This capability is ???



D.3ird's Eye View of Sokcho Battery Energy Storage System B 62 D.4cho Battery Energy Storage System Sok 63 D.5 BESS Application in Renewable Energy Integration 63 D.6W Yeongam Solar Photovoltaic Park, Republic of Korea 10 M 64 D.7eak Shaving at Douzone Office Building, Republic of Korea P 66



And recent advancements in rechargeable battery-based energy storage systems has proven to be an effective method for storing harvested energy and subsequently releasing it for electric grid applications. 2 ???



Lithium-ion batteries are the state-of-the-art electrochemical energy storage technology for mobile electronic devices and electric vehicles. Accordingly, they have attracted a continuously increasing interest in academia and industry, which has led to a steady improvement in energy and power density, while the costs have decreased at even faster pace.

# WORKING PRINCIPLE OF LITHIUM BATTERY ENERGY STORAGE SYSTEM



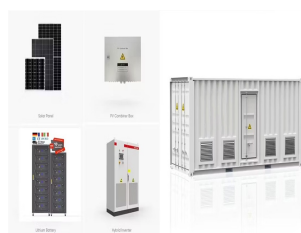
With interest in energy storage technologies on the rise, it's good to get a feel for how energy storage systems work. The most typical type of battery on the market today for home energy storage is a lithium-ion battery. Lithium-ion batteries power everyday devices and vehicles, from cell phones to cars, so it's a well-understood, safe



According to the US Department of Energy (DOE) energy storage database [], electrochemical energy storage capacity is growing exponentially as more projects are being built around the world. The total capacity in 2010 was of 0.2 GW and reached 1.2 GW in 2016. Lithium-ion batteries represented about 99% of electrochemical grid-tied storage installations during ???



Discover the principles and importance of battery energy storage, including how it works, its advantages, types, and why lithium-ion is the first choice. Battery energy storage systems reduce greenhouse gas emissions. By increasing the penetration of renewable energy sources and minimizing reliance on fossil-fueled nuclear power plants



This book examines the scientific and technical principles underpinning the major energy storage technologies, including lithium, redox flow, and regenerative batteries as well as bio-electrochemical processes. Over three sections, this volume discusses the significant advancements that have been achieved in the development of methods and materials for ???



Introduction: As an important type of lithium battery, ternary lithium battery is widely used in electric vehicles, energy storage systems and other fields. This guide will deeply interpret the principles, advantages, applications and future development trends of ternary lithium batteries to provide you with a comprehensive understanding. 1. The principle???

# WORKING PRINCIPLE OF LITHIUM BATTERY ENERGY STORAGE SYSTEM



Battery energy storage systems Kang Li School of Electronic and Electrical Engineering. ??? Due to the high energy density of lithium-ion batteries, local damage caused by external influences will release a significant amount of heat, which can easily cause thermal runaway.



Overview Safety Construction Operating characteristics Market development and deployment See also



Lithium-ion Battery Energy Storage Systems. 2 mariofi +358 (0)10 6880 000 White paper Contents 1. Scope 3 2. Executive summary 3 3. Basics of lithium-ion battery technology 4 3.1 Working Principle 4 3.2 Chemistry 5 3.3 Packaging 5 3.4 Energy Storage Systems 5 3.5 Power Characteristics 6 4 Fire risks related to Li-ion batteries 6



Battery system design. Marc A. Rosen, Aida Farsi, in Battery Technology, 2023 6.2 Battery management system. A battery management system typically is an electronic control unit that regulates and monitors the operation of a battery during charge and discharge. In addition, the battery management system is responsible for connecting with other electronic units and ???



A Comprehensive Guide How Lithium-Ion Batteries Work. Lithium-ion batteries have become the cornerstone of modern portable electronics and gadgets, electric vehicles, and storage systems for renewable energy. Their high energy density, longevity, and efficiency make them indispensable in the modern technology-driven world.

# WORKING PRINCIPLE OF LITHIUM BATTERY ENERGY STORAGE SYSTEM



The Future of Battery Energy Storage Systems. The future of Battery Energy Storage Systems is looking bright. As technology advances, BESS is becoming more affordable, efficient, and accessible. Researchers and engineers are ???



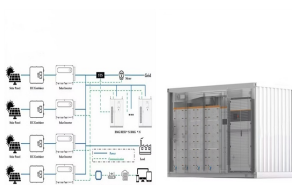
A battery is made up of an anode, cathode, separator, electrolyte, and two current collectors (positive and negative). The anode and cathode store the lithium. The electrolyte carries positively charged lithium ions from the anode to the ???



Fig. 4 shows the specific and volumetric energy densities of various battery types of the battery energy storage systems [10]. Download: Download high-res image (125KB) Download: Download full-size image; (SoF), defined as the working state of a lithium-ion battery pack under specific constraint conditions, is particularly important. One of



Lithium-ion battery (LIB) is one of rechargeable battery types in which lithium ions move from the negative electrode (anode) to the positive electrode (cathode) during discharge, and back when charging. It is the most popular choice for consumer electronics applications mainly due to high-energy density, longer cycle and shelf life, and no memory effect.



Parts of a lithium-ion battery ((C) 2019 Let's Talk Science based on an image by ser\_igor via iStockphoto).. Just like alkaline dry cell batteries, such as the ones used in clocks and TV remote controls, lithium-ion batteries provide power through the movement of ions. Lithium is extremely reactive in its elemental form. That's why lithium-ion batteries don't use elemental ???

# WORKING PRINCIPLE OF LITHIUM BATTERY ENERGY STORAGE SYSTEM



Battery Energy Storage Systems (BESS) have become a cornerstone technology in the pursuit of sustainable and efficient energy solutions. This detailed guide offers an extensive exploration of BESS, beginning with the fundamentals of these systems and advancing to a thorough examination of their operational mechanisms.



pressing need for inexpensive energy storage. There is also rapidly growing demand for behind-the-meter (at home or work) energy storage systems. Sodium-ion batteries (NIBs) are attractive prospects for stationary storage applications where lifetime operational cost, not weight or volume, is the overriding factor. Recent improvements in