

# WULUSHIDONG PUMPED STORAGE POWER STATION



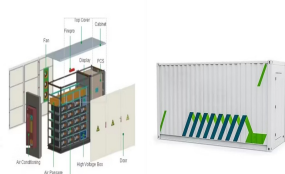
Introduction. Pumped storage power plants are a type of hydroelectric power plant; they are classified as a form of renewable (green) power generation.. Pumped storage plants convert potential energy to electrical energy, or, electrical energy to potential energy.They achieve this by allowing water to flow from a high elevation to a lower elevation, or, by pumping water from a a?|



Electric Vehicle Charging Station/ Power Consumption Report; Executive Summary Report; Fuel Reports. Coal Import Report; Coal Statement; Fuel Reports (old) and Gas Based Power Stations; Guidelines for Acceptance Examination and Concurrence of Detailed Project Reports for Pumped Storage Schemes version 3.



The pumped storage power station has the characteristics of frequency-phase modulation, energy saving, and economy, and has great development prospects and application value. In order to cope with the large-scale integration and intermittency of renewable energy and improve the ability of pumped storage units to participate in power grid frequency modulation, a?|

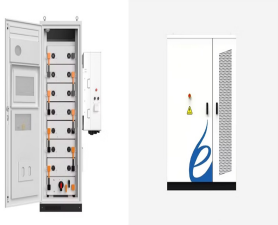


For the realization of the above goals, the construction of a pumped storage power station is quite important, and it is the key to the realization of green and low-carbon energy transformation a?|

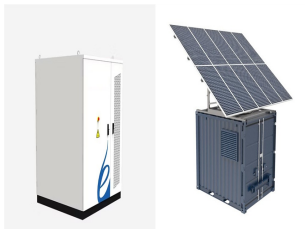


Many existing pumped storage facilities are decades old, and are undergoing rehabilitation to extend plant life and increase capacity and/or efficiency. New construction of pumped storage hydropower is coming off a 15-year lag for major facilities, and more than 20 projects are currently in the FERC permitting process.

# WULUSHIDONG PUMPED STORAGE POWER STATION



China has completed the Fengning Pumped Storage Power Station in Hebei province, now the largest facility of its kind globally. The plant, which has a total installed capacity of 3.6GW, is operated by the State Grid Corporation of China (SGCC). The final turbine unit was activated on August 11, 2024, marking the end of construction that began



Old School Waterpower Primes Clean Energy Future Our blueprint to serve customers reliable energy with net zero carbon emissions by 2040, the Clean Energy Plan, is made possible by a 50-year-old hydroelectric plant nestled on the shores of Lake Michigan. The Ludington Pumped Storage Plant, co-owned by Consumers Energy (51%) and DTE Electric (49%), is a key a?



Pumped storage hydropower (PSH) is a type of hydroelectric energy storage. It is a configuration of two water reservoirs at different elevations that can generate power as water moves down from one to the other (discharge), passing through a turbine.



Pumped storage is a technology for renewable energy generation that provides large-scale energy storage capacity to balance the difference between load demand and supply in power systems by harnessing the gravitational potential energy of water for energy storage and power generation [6].As an energy storage and regulation technology, pumped storage can a?



1 Introduction. In the context of global energy structure transformation, pumped storage power plants play a crucial role in the power system (Zhang et al., 2024a).As renewable energies such as wind and solar power become more widely used, the balance between supply and demand in the power system faces unprecedented challenges (Jia et al., 2024).With their a?

# WULUSHIDONG PUMPED STORAGE POWER STATION



The secured capacity from pumped storage systems can rise to up to 16GW. Germany would be able to build and run fewer new gas power plants. The operation of the pumped storage systems would be profitable, and power generation costs would drop. At the same time macro-economic benefits are expected. The benefits



With the increasing global demand for sustainable energy sources and the intermittent nature of renewable energy generation, effective energy storage systems have become essential for grid stability and reliability. This paper presents a comprehensive review of pumped hydro storage (PHS) systems, a proven and mature technology that has garnered significant interest in a?)



While the concept of pumped storage hydropower (PSH) is not new, adjustable-speed pumped storage hydropower (AS-PSH) is equipped with power electronics; thus, it has more capabilities and is more agile and flexible to integrate with modern power systems. The composition of power systems from a century ago consist mostly of conventional



Small and medium-sized pumped storage power station is the collective name of medium and small pumped storage power station, which refers to the pumped storage power station with a total storage capacity of less than 100 million cubic meters in the reservoir area and an installed capacity of less than 300,000 kW, and the approval and construction time of such a?)



The Steenbras Power Station, also Steenbras Hydro Pump Station, is a 180 MW pumped-storage hydroelectric power station commissioned in 1979 in South Africa. The power station sits between the Steenbras Upper Dam and a small lower reservoir on the mountainside below. [1] It acts as an energy storage system, by storing water in the upper reservoir during off-peak hours and a?)

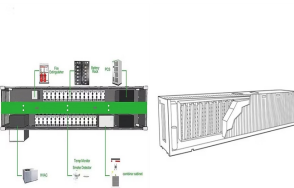
# WULUSHIDONG PUMPED STORAGE POWER STATION



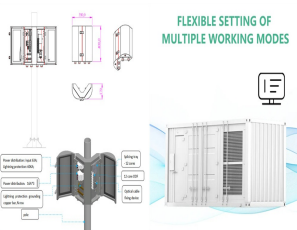
The construction of the pumped storage project is anticipated to encompass an area of approximately 402.5ha. Reservoir details. The upper reservoir will boast a live storage capacity of 1.22 thousand million cubic feet and a dead storage capacity of a?



Snowy 2.0 Pumped Storage Power Station or Snowy Hydro 2.0 or simply Snowy 2.0 is a pumped-hydro battery megaproject in New South Wales, Australia. The dispatchable generation project expands upon the original Snowy Mountains Scheme (ex post facto Snowy 1.0) connecting two existing dams through a 27-kilometre (17 mi) underground tunnel and a new, underground a?



Concept. Pumped-storage power plants are structured around two bodies of water, an upper and a lower reservoir 1 (see the diagram below).. At times of very high electricity consumption on the grid, the water from the upper reservoir, carried downhill by a penstock, drives a turbine and a generator to produce electricity, which is used to meet the increased a?



4. Okutataragi Pumped Storage Power Station, Japan, 1,932 MW capacity, completed 1974. Kurokawa Reservoir, the upper reservoir, has a capacity of 27,067-acre-feet. It was created by an embankment



Thus, pumped storage plants can operate only if these plants are interconnected in a large grid. Principle of Operation. The pumped storage plant is consists of two ponds, one at a high level and other at a low level with powerhouse near the low-level pond. The two ponds are connected through a penstock. The pumped storage plant is shown in fig. 1.

# WULUSHIDONG PUMPED STORAGE POWER STATION



Driven by China's long-term energy transition strategies, the construction of large-scale clean energy power stations, such as wind, solar, and hydropower, is advancing rapidly. Consequently, as a green, low-carbon, and flexible storage power source, the adoption of pumped storage power stations is also rising significantly. Operations management is a significant a?|



The Bath County Pumped Storage Station has a maximum generation capacity of more than 3 gigawatts (GW) and total storage capacity of 24 gigawatt-hours (GWh), the equivalent to the total, yearly electricity use of about 6000 homes.. Construction began in March 1977 and upon completion in December 1985, the power station had a generating capacity of a?|



The building of the pumped-storage power plant is connected with the upper basin by 6-pressure reinforced concrete and metal pipelines with a diameter of 3.8 m. The upper basin was created at a height of 70 m above the level of the Kyiv reservoir with a useful volume - 3700000 cubic meters, where during the night decrease in energy consumption



Hydroelectric power plants, which convert hydraulic energy into electricity, are a major source of renewable energy. There are various types of hydropower plants: run-of-river, reservoir, storage or pumped storage.



Pumped-Hydro Energy Storage Potential energy storage in elevated mass is the basis for . pumped-hydro energy storage (PHES) Energy used to pump water from a lower reservoir to an upper reservoir Electrical energy. input to . motors. converted to . rotational mechanical energy Pumps. transfer energy to the water as . kinetic, then . potential energy

# WULUSHIDONG PUMPED STORAGE POWER STATION



The pumped storage power station realizes grid connected power generation through the conversion between the potential energy of surface water and mechanical energy. It has become the strategic resource of UHV power grid with its low valley peak regulation and emergency standby function. The green basic design and design of the pumped storage



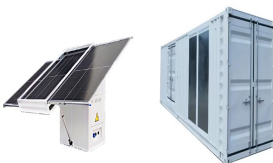
Over the past decade, the growth of new power plants has become a trend, with new energy stations growing particularly fast. In order to solve the problem of electricity consumption, the development of hybrid pumped storage based on hydropower stations has become a focus, so it is necessary to evaluate and analyze its technical and economic a?|



Developing the PSPS is of great importance to the power source structure adjustment, and the secure and stable operation of the power grids in China in the 21st century. This paper a?|



Compared to conventional hydropower stations, the frequent start-stop operations and complex operating conditions of pumped storage units pose severe challenges to the stable operation, a?|



Did you know: when running at full capacity, the Coo power station can provide 1,080 MW for six hours, as much as a nuclear unit but with a start-up time of under two minutes. How does Coo pumped-storage station work? The flowing water turns a turbine which then turns a The generator transforms the turbine's mechanical energy into electricity.