

# XIAODONG VILLAGE SOLAR POWER STATION



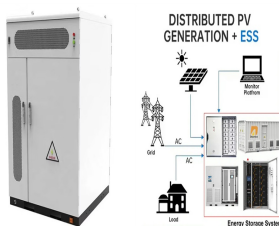
6 ? The company had the land filled in and leveled and then built a photovoltaic power station there. Rows of solar panels were installed, and beneath them, villagers grow crops and ???



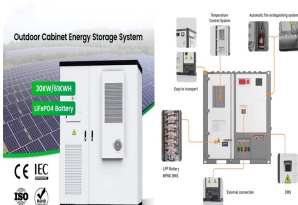
The station was the tallest solar power tower in the world at a height of 260 meters including the boiler [7] but was recently surpassed by the 262.44 meter tall solar power tower at the Mohammed bin Rashid Al Maktoum Solar Park. [8] Ashalim Plot C is a 30 MW photovoltaic plant, commissioned in 2018, one year before the CSP plants.



JAWAHARLAL NEHRU NATIONAL SOLAR MISSION Make India a global leader in solar energy and the mission envisages an installed solar generation capacity of 20,000 MW by 2022, 1,00,000 MW by 2030 and of 2,00,000 MW by 2050. The total expected investment required for the 30-year period will run is from Rs. 85,000 crore to Rs. 105,000 crore. Between ???



?,??,u?,?????,??,??,-?,??,<?<?,??,?????,??,??,??,?12?,?????,??,?  
?,??,-?,??,??,??,?????,??,??,??,??,??,??,umetro ?,??,u???? 7 Xiaodong  
Village Station ?,??,??,??,??,u?,??,?????,??,??,?



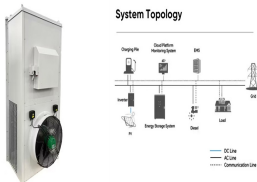
The commissioning of the solar PV power plant is expected in Q3 2025. Once commissioned, it will be AMEA Power's first operational asset in the country. It will generate approximately 53,940MWh of clean energy per year, power more than 192,640 households and will offset 26,600 tonnes of carbon emission annually.



# XIAODONG VILLAGE SOLAR POWER STATION



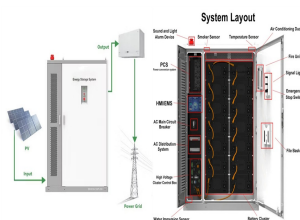
Along the Seine River, Paris has unveiled the largest mobile and floating solar power plant in the world, marking a significant milestone for sustainable energy. Sponsored by EDF ENR, a division of the energy giant EDF, this state-of-the-art photovoltaic system intends to transform the use of green energy at important international events, beginning with the ???



Renewable energy becomes a key contributor to our modern society, but their integration to power grid poses significant technical challenges. Power quality is an important aspect of renewable energy integration. The major power quality concerns are: 1) Voltage and frequency fluctuations, which are caused by non-controllable variability of renewable energy ???



Modhera village has a ground-mounted solar power plant and over 1,300 rooftop solar systems with one kilowatt (kW) capacity have been installed on houses to generate electricity. These rooftop solar systems on residential and government buildings have also been integrated with a battery energy storage system (BESS).



Workers at a photovoltaic power station in Suanzili village, Liaocheng. "The photovoltaic power station was built on 0.8 square kilometers of saline-alkali land in a location where the annual



The Cottam Solar Project is named after its grid connection point at the existing National Grid substation at the Cottam Power Station. The proposals involve a series of four site areas, referred to as Cottam 1, 2, 3a and 3b, which will host solar arrays, grid connection infrastructure and energy storage facilities.



# XIAODONG VILLAGE SOLAR POWER STATION



Buy the if you want the best budget solar power station; Buy the if you want the best solar power station with a solar panel bundle; Buy the if you want a rugged solar power station; Jackery



1 ? In 2019, the descendants of an erstwhile zamidar family entered into an agreement of sale for 91 acres of land to Azure Power Forty Pvt Ltd in Mikir Bamuni Grant village in Assam's Nagaon district to build a solar power plant. The land deal directly affected the livelihoods of at least 60 families dependent on agriculture. Since then, farmers, activists, politicians, and ???



The calculation is based on the total consumption of power in the village. Loads are mainly fans, lights and TVs. (i) Total fan load = F W for H1 h during day and H2 h at night Chakraborty, S. (2018). Micro-grid for Village Empowerment Using Solar PV-Operated Micro-hydel Power Plant. In: SenGupta, S., Zobaa, A., Sherpa, K., Bhoi, A. (eds



Tamil Nadu News:Solar power plant at a village in Karur records maximum generation . November 22, 2024 e-Paper. LOGIN Account. FREE TRIAL Subscribe FRAME FRONT PAGE. Live Now Agriculture



Solar-powered street lights at Modhera village, where a 6-megawatt PV power plant is connected to rooftop solar panels. All photos: Taniya Dutta / The National The solar panels are installed on about 1,350 houses in ???



# XIAODONG VILLAGE SOLAR POWER STATION



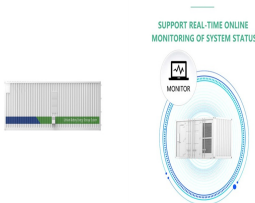
The Central African Republic (CAR) has a new photovoltaic solar power plant. The facility, inaugurated by President Faustin Archange Touadera on 17 November 2023, covers a 70-hectare site in the village of ???



The Sun Temple now runs a 3D light show entirely on solar power, its premises run on solar energy and the parking area also boasts electric vehicle charging stations. Solar-powered electric vehicle charging stations at the Sun Temple in Modhera, India. Renewable energy storage



Overview. The 400MW Pavagada Solar Plant is a pivotal source of clean, renewable energy, serving the energy needs of Karnataka. Its core objectives is to generate a substantial annual electricity output, aiming for an impressive 1,050 Million Units (MU), to harness cutting-edge technology, exemplified by the innovative MMS Structure Seasonal Tilt and MMS Fixed ???



The total installed capacity of hydropower, wind, and solar energy in China has exceeded 905 GW by 2020 according to Ref. [3]. However, wind and solar energy, in contrast to controllable power



(DOI: 10.1109/TIA.2016.2626253) Renewable energy becomes a key contributor to our modern society, but their integration to power grid poses significant technical challenges. Power quality is an important aspect of renewable energy integration. The major power quality concerns are: 1) Voltage and frequency fluctuations, which are caused by ???



# XIAODONG VILLAGE SOLAR POWER STATION



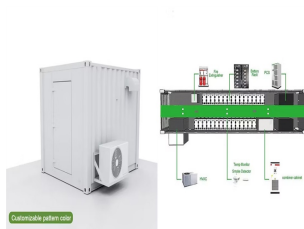
Installed at a cost of Rs 31.5 lakh, it provides electricity to all 69 houses in the village. Development Alternatives, a non-profit organisation, in collaboration with Scatec Solar of Norway, gave the village the Community-based Solar Power Plant. Rampura is 17 km from Jhansi. "In this solar power plant, community partnership has ensured



Under this project, the government has undertaken the task of complete solarisation of Modhera village by developing a Ground Mounted Solar power plant and installing over 1300 rooftop solar systems on both government as well as residential buildings. Around 271 houses out of the 1600 houses in Modhera have installed rooftop solar systems.



When all the Yaolong River basin integrated hydro-wind-solar power stations of the green, clean and renewable energy demonstration base are completed, the base will be able to generate more than 220 billion kilowatt hours of electricity each year, which is equivalent to saving about 70 million tons of standard coal and reducing carbon dioxide



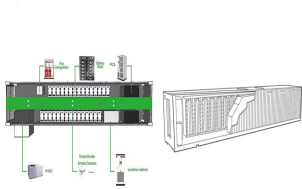
This paper proposes an integrated ecological, economic and social model to assist sustainable rural development in villages in Bangladesh. In the model, renewable energy technologies (RETs) create



JINAN, Nov. 10 (Xinhua) -- On the rolling hillside near Chaiheyu village in Linyi, a city located in east China's Shandong Province, numerous blue solar panels shine brightly in the sunlight, ???



# XIAODONG VILLAGE SOLAR POWER STATION



Solar power plants are systems that use solar energy to generate electricity. They can be classified into two main types: photovoltaic (PV) power plants and concentrated solar power (CSP) plants. Photovoltaic power plants convert sunlight directly into electricity using solar cells, while concentrated solar power plants use mirrors or lenses???



This project, situated at a maximum altitude of 5,228 meters, has shattered the previous global record for the highest elevation of such a power station. The power station's second phase is located at an altitude ranging from 5,046 to 5,228 meters, boasting an installed capacity of 100 megawatts, supported by an impressive array of nearly



The power station can be charged to full in just 1.6 hours, using mains power, and like the Jackery model above can be packaged with a bifacial 220W solar panel (?549, Hampshiregenerators .uk



The solar park is intended to be built in Toru-Aigyr village, Issyk-Kul Region, and is seen to be commissioned by the end of next year. The project includes a number of key agreements such as a 25-year offtake contract with the National Electric Grid of Kyrgyzstan (NEGK), a public-private partnership agreement with the Ministry of Energy, and a 25-year ???