

XINWU DISTRICT PHOTOVOLTAIC SUPPORT EQUIPMENT



What is Xinwu District? Xinwu district,also known as the Wuxi National Hi-Tech District,will strive this year to set a benchmark for high-quality growth and better implement its new development concept featuring innovation,coordination,environmentalism,openness and sharing.



What is Xinwu government doing to strengthen innovation-driven strategy? Strengthening the innovation-driven strategy is another focus of the Xinwu government's work. The district will highlight the building of Taihu Bay Sci-Tech Innovation Cityand plans to attract more than 2,000 sci-tech companies throughout the year.



What will Xinwu achieve? To reach these goals, Xinwu will pour resources into the development of seven areas including industries, innovation, reform and the environment. The district will continue to strengthen the real economy and construct an industrial system with more distinctive features.



Its products include PV inverters,battery, smart terminal, monitoring device and EMS service. Contact Information. H1-1001, China Internet of Things International Innovation Park; No. 6 Jingxian Road, Xinwu District; Wuxi, Zhejiang; Solinteg's primary industry is Alternative Energy Equipment. Is Solinteg a private or public company?

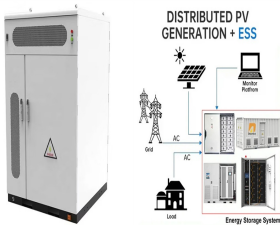


Wuxi Lead Intelligent Equipment has 5 employees across 10 locations and ?16.47 b in annual revenue in FY 2023. formation and aging, PV manufacturing, 3C intelligent equipment, automotive intelligent production line, fuel cell equipment, smart logistics, laser precision processing, and connected factory solutions. Xinwu District

XINWU DISTRICT PHOTOVOLTAIC SUPPORT EQUIPMENT



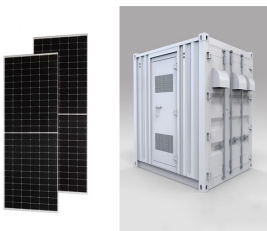
Xinwu district, also known as the Wuxi National Hi-Tech District, will strive this year to set a benchmark for high-quality growth and better implement its new development concept featuring innovation, coordination, environmentalism, openness and sharing. photovoltaic modules and equipment, and lithium batteries and anode materials. The



It offers products, such as Li-ion battery equipment, Photovoltaic equipment, 3C intelligent equipment, capacitor equipment, LEAD MES, intelligent logistics, and vehicle production line. The company was formerly known as Wuxi Lead Auto Equipment Co., Ltd. and changed its name to Wuxi Lead Intelligent Equipment Co.,Ltd. in December 2015



Xinwu District (simplified Chinese: 新吴区; traditional Chinese: 新吳區; pinyin: Xīnwú Qū) is one of five urban districts of Wuxi, Jiangsu Province, People's Republic of China. Located in the delta hinterland of the Yangtze River to the southeast of center Wuxi, the district has an area of 219 square kilometres (85 sq mi) and a total population of 536,807.



We can provide customers with technical support from concept design to equipment manufacturing and offer additional value-added services such as equipment installation and commissioning, equipment relocation, specialized training, equipment maintenance, and old equipment refurbishment. No.6 Xinnong Road, Shuofang Town, Xinwu District, Wuxi

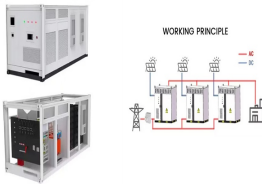


Wuxi TRUMY is a major manufacturer of couplings for fluid and turbine equipment in Asia, ranking in the front of the industry for long in terms of scale and competence. No.8,Huayou Second Rd., Xinwu District, Wuxi, China. Tel: +86-510-85251297. Fax: +86-510-85706330. Email : sales@trumy . Website : All Right Reserved

XINWU DISTRICT PHOTOVOLTAIC SUPPORT EQUIPMENT



Solar Panels Solar Components Solar Materials Production Equipment.
No. 10, Lexing Road, Xinwu District, Wuxi, Jiangsu Click to show
company phone Ground PV Mounting System From 0.0538 / Wp
Storage Systems LVTopSun - LVTS-512200-G3



Solutions for of Photovoltaic Cell Whole Line Logistics. Smart Logistics for
Storage & Retrieval; Conveying Equipment; Stacking & Sorting Equipment
It enables rapid fault localization, reducing unplanned equipment
downtime by over 40%, and precise fault prediction, enhancing Mean
Time Between Failures (MTBF) by more than 20%. Contact our



The first new technology GW-Level TOPCon photovoltaic cell smart
factory production line in the photovoltaic industry The conversion
efficiency of mass-produced cells exceeds 26%, the daily production
capacity reaches more than 300,000 pieces, the yield and fragmentation
rate reaches the industry-leading level, and the operating cost of the
whole line once again hits the lowest in



Governments" policy support for home photovoltaic and energy storage
technology is mainly reflected in the following aspects: Financial
subsidies: The government encourages households to adopt solar
photovoltaic power generation and energy storage systems through
financial subsidies and other means to reduce the purchase and
installation



The IoT-Park in Xinwu district, the Yangtze River Delta Integrated Circuit
Industrial Application and Technological Innovation Center in Xishan
district, and the National Integrated Circuit (Wuxi) Design Center in Binhu
district are collaborating to develop core technologies for mass production
as well as packaging technology for third-generation

XINWU DISTRICT PHOTOVOLTAIC SUPPORT EQUIPMENT



The district boasts a leading photovoltaic industrial cluster in China, with a complete industrial chain from research and development, product manufacturing, equipment supply, inspection ???



The equipment has higher equipment reliability than the overall level of the industry, less than 1% equipment failure rate. The tolerance of positioning is within 2mm Close-loop control can be realized by collecting the speed and positioning of stacker cranes.



Autowell Technology is a well-known intelligent equipment manufacturer in the photovoltaic, lithium-ion battery and semiconductor industries. Home; Solution. Generate solar power 1000 billion+ kwh. ENERGY SAVING. Save coal 330 ???



Provide the whole-line equipment for MEA production, including mixing, coating, decaling, and sealing. LHI has successfully improved the uniformity of large-area catalyst decaling, and reduced air bubbles in sealing process. A high-tech enterprise is an economic entity that is knowledge-intensive and technology-intensive in the "national



Founded in 2010, Wuxi Autowell Technology Co., Ltd. (Stock Code: 688516) is a well-known intelligent equipment manufacturer in the PV, Li-ion battery and semiconductor industries, and currently has more than 4000 employees. In ???

XINWU DISTRICT PHOTOVOLTAIC SUPPORT EQUIPMENT



The construction of Metro Line 6 will strongly support the construction and development of functional areas along the line Photovoltaic; Energy storage; Battery; Nuclear power; Hydropower; Wind power; Binhu District, Liangxi District, and Xinwu District of Wuxi City, but also forms transfers with multiple subway lines and city area



-square-kilometer district has a permanent population of some 570,700, who live in six subdistricts. Xinwu, also known as the Wuxi National Hi-Tech District, has established a reputation for its sound industrial structure and robust economic growth. Its GDP stood at 184.55 billion yuan (\$27.53 billion) in 2019, up 6.3 percent year-on-year.



Wuxi Lead Intelligent Equipment Co. specializes in the design, manufacture and marketing of intelligent production equipment and systems, mainly for the lithium-ion battery, photovoltaic cell, semiconductor and consumer electronics industries. Net sales break down by family of products as follows: - lithium-ion battery production equipment (76.1%);



Photovoltaic and Semiconductor Wet Process Equipment Design, Research, and Manufacturing Experience. Pioneer in Wet Process Technology for Black Silicon Texturing in China. Focused on providing one-stop services for the production, process, and after-sales support of photovoltaic and semiconductor wet process equipment.



development pattern with Xinwu District and Huishan District as the core and covering the surrounding areas. photovoltaic product equipment manufacturing, and so on. The volume of the photovoltaic industry is provide strong support for Wuxi to build an RMB200 billion (\$29 billion) new energy industry cluster

XINWU DISTRICT PHOTOVOLTAIC SUPPORT EQUIPMENT



Industrial Motherboard New Energy Vehicles Solar Photovoltaic Semiconductor Dry Vacuum Pump Medical Equipment Food Filling Line. CONTACT US. Marketing Network Becoming Supplier. Follow & Get Services. National Service Hotline. 0510-85211088. Address: No.1 Lijiang Road, Xinwu District, Wuxi City, Jiangsu Province. Email: scf@xezchina



Crystalline Silicon Terrestrial Photovoltaic (PV) Modules See Annex 1 Jiangsu Sunport Power Corp., Ltd. No.20, Xishi Road, Xinwu District, Wuxi City, Jiangsu Province, 214028, P.R. China EN IEC 61730-1:2018; EN IEC 61730-1 EN IEC 61730-2:2018; EN IEC This Certificate of conformity is based on the evaluation of samples of the product.